

| UC 2019

Esri User Conference



A digital graphic with a dark blue background. On the left, there's a glowing red, textured shape resembling a brain or a complex network. In the center, a globe of the Earth is shown, overlaid with a network of white dots and lines. To the right of the globe, there are several concentric, semi-transparent blue circles. The word 'WELCOME' is written in white, bold, sans-serif capital letters across the globe.

WELCOME

SEE
WHAT
OTHERS
CAN'T

Geo-Enabled Systems

Esri

GEOSPATIAL CLOUD

ArcGIS



Esri
**GEO SPATIAL
CLOUD**

ArcGIS

CREATING USEFUL TECHNOLOGY
and SUPPORTING OUR USERS

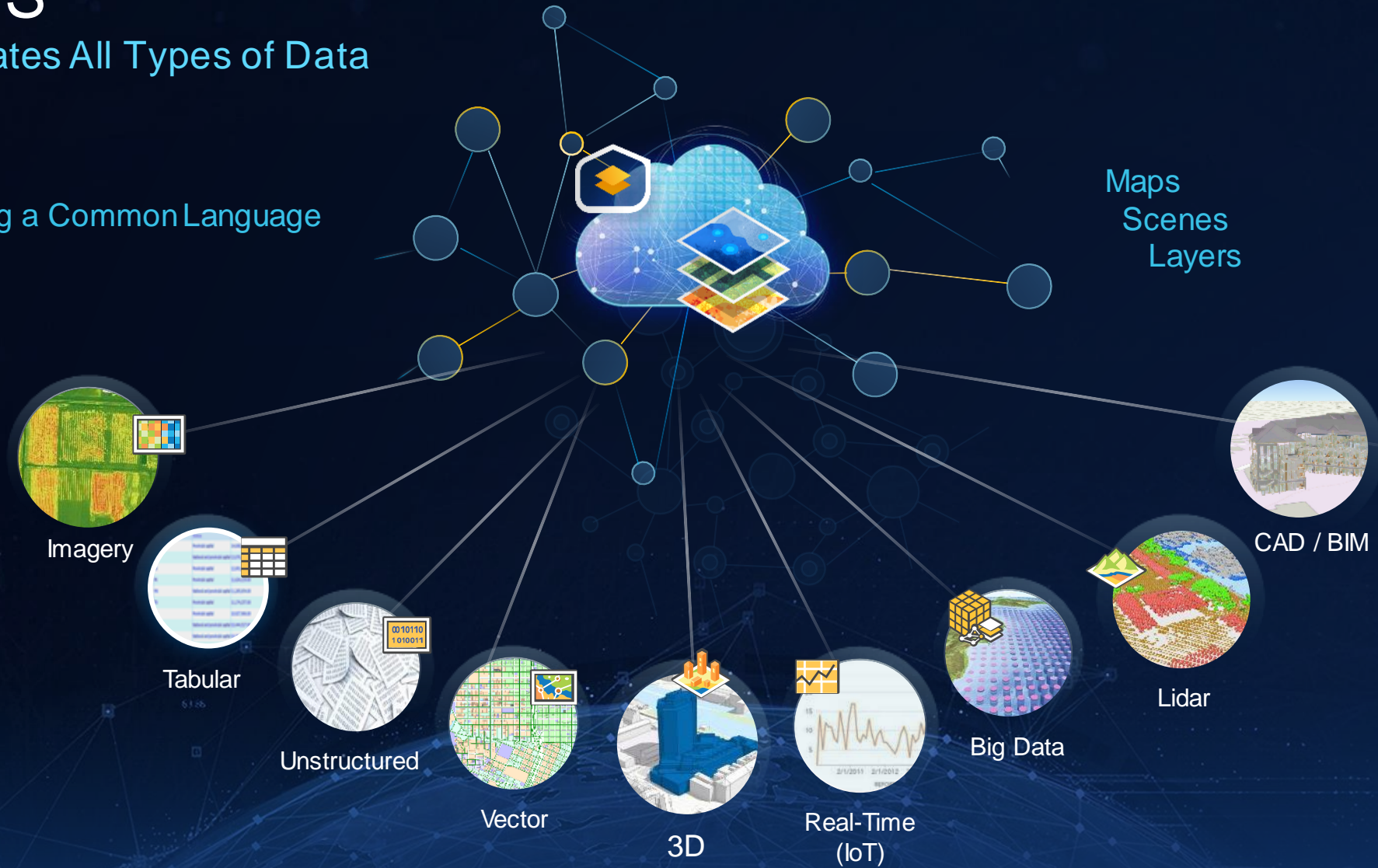
CREATING USEFUL TECHNOLOGY
and SUPPORTING OUR USERS

ArcGIS

Integrates All Types of Data

Creating a Common Language

Maps
Scenes
Layers



ArcGIS

Supports Three Fundamental Systems

System of Insights
(Analytics)



System of Engagement
(Apps and Maps)




Real-Time Measurement
(Field / IoT / Remote Sensing)



System of Record
(Transactions)

Bringing Together Systems, Workflows and Content



Content

Spatial Analysis & Data Science

3D Visualization & Analytics

Data Management

Field Operations

Imagery & Remote Sensing

Application Development & Customization

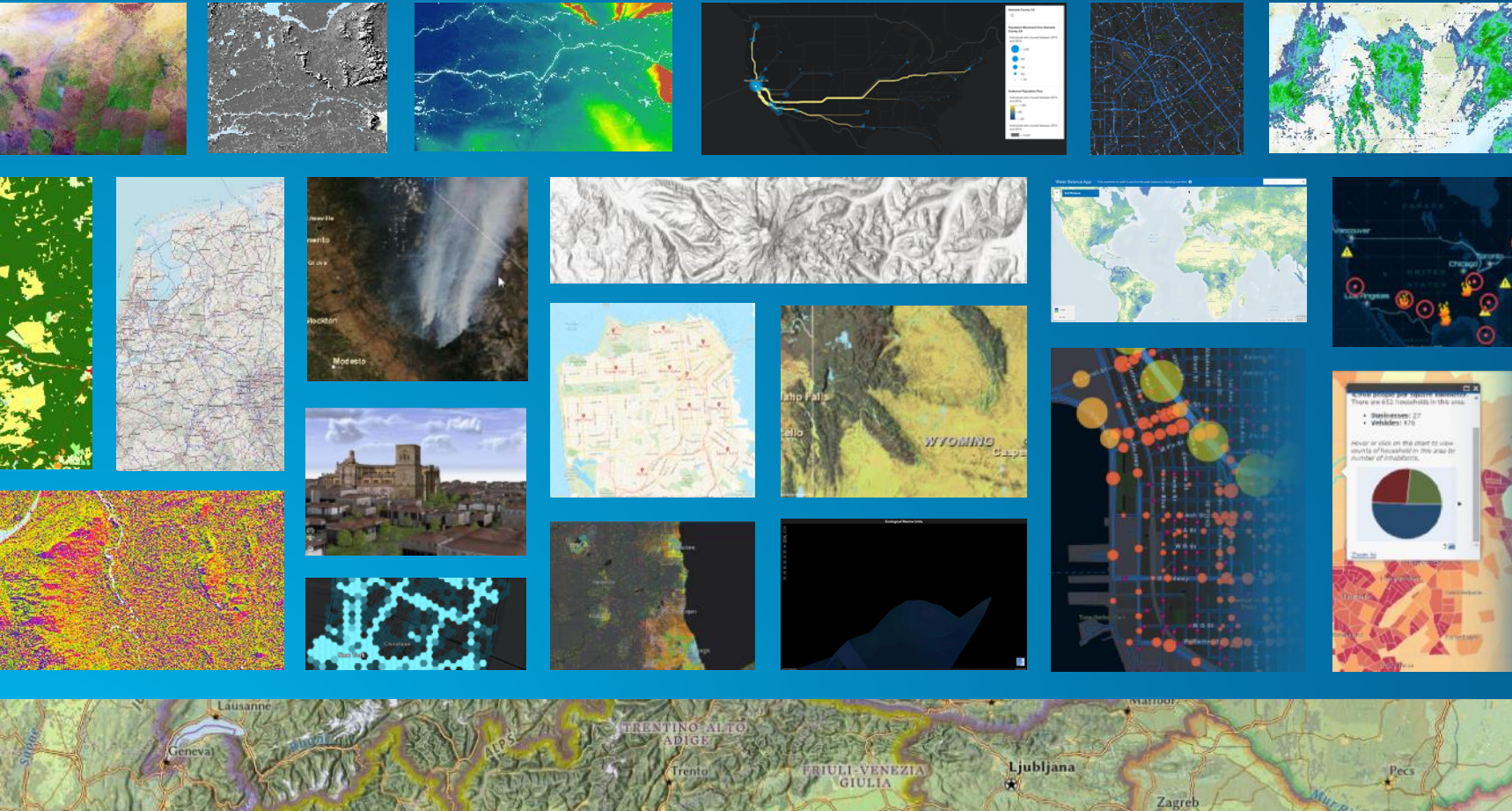
Real-Time Visualization & Analytics

Mapping

ArcGIS Capabilities Are Advancing
MANY NEW INNOVATIONS

A Living Atlas of the World

Over 7,000 Ready-to-Use Maps and Datasets



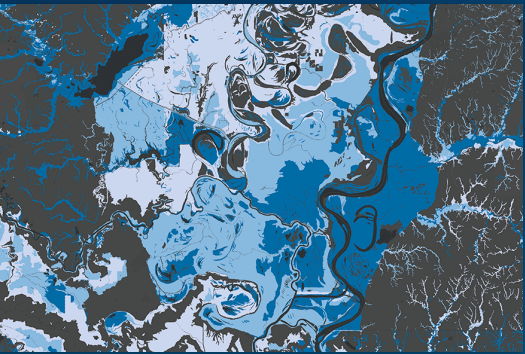
Trending
 Transportation
 Environment
 Weather
 Landscape
 Infrastructure
 Basemaps
 Habitats
 Elevation
 Traffic
 Boundaries
 Land Cover
 Soils
 Utilities
 Imagery
 Hydro
 Demographics
 People
 Observations
 Hazards
 Oceans
 Historical

*... And Millions of Maps, Layers
and Datasets Shared by Users*

ArcGIS Content Is Continuously Improving

Many New and Updated Services

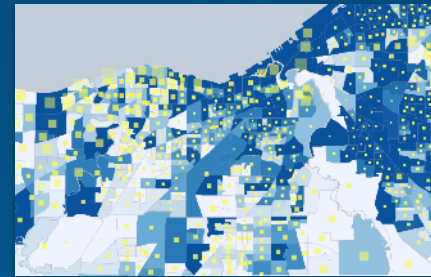
SSURGO Soils



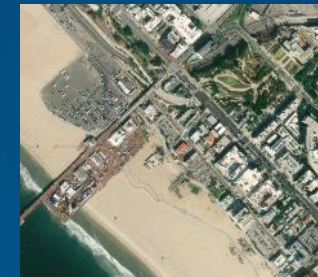
Customizable Vector Tile Basemaps



US Demographics



Updated Imagery



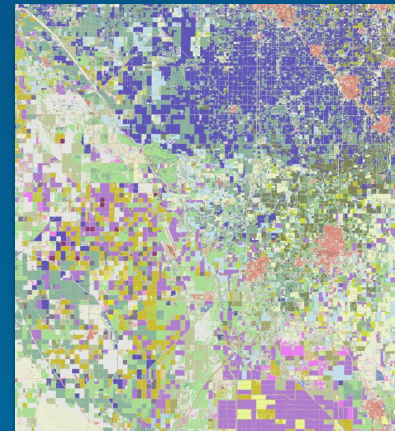
OpenStreetMap



Updated Land Cover (NLCD)



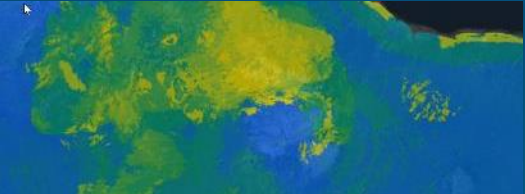
CropScape



NGS Basemap



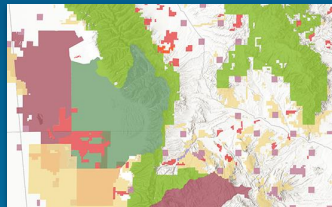
Biodiversity



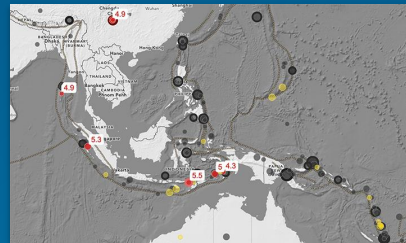
Urban Change



Protected Areas (PADUS)



Real-Time Observations



Demographics
Land Cover
Biodiversity
Environment
Soils
Agriculture
Basemaps
Imagery
Protected Areas

Growing and Changing on a Daily Basis...

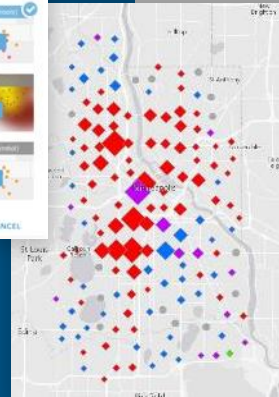
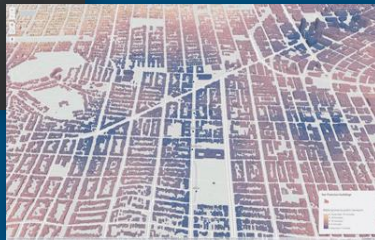
... Integrating Community Content
Shared by Our Users

Smart Mapping

Enabling Everyone to Make Amazing Maps



Data-Driven 3D

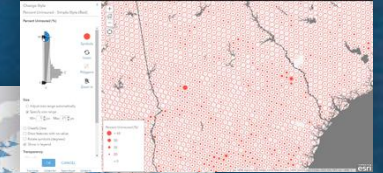


Dynamic Clustering

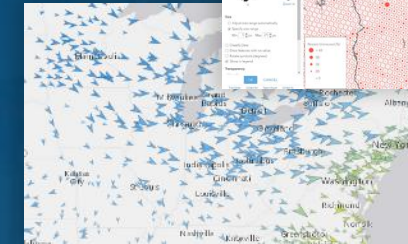
Fast Performance WebGL



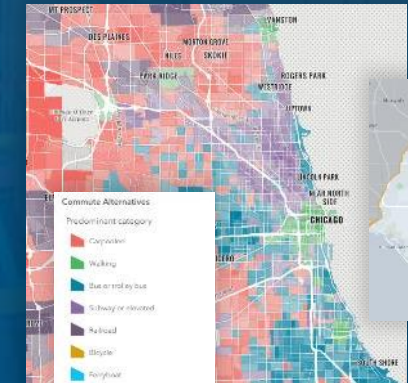
Exploratory Mapping



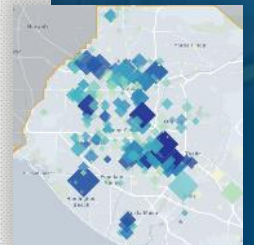
Directional Mapping



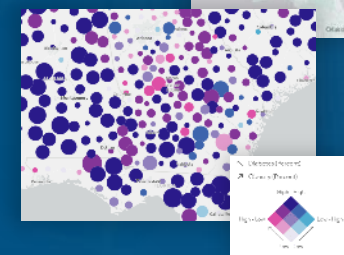
Predominance Mapping



Graduated Symbols



Multivariate



3D Point Extrusion



Vector Feature Tiles



Dynamic and Data-Driven Mapping

StoryMaps A Whole New Way to Tell Stories

Exponentially Growing

- Over a Million Stories
- 3,000+ / Day
- Millions of Views / Week

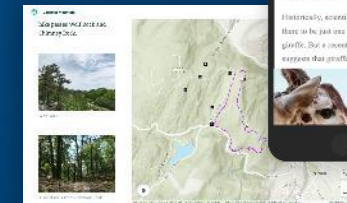
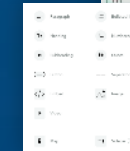
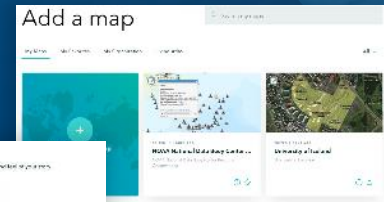
Next Generation

New

Easier

Mobile
Optimized

Integrated Mapping
Express Map



Mapping and Cartography

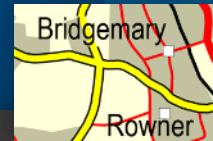
Symbology, Annotation & Processing



Powerful Arcade Expressions



Symbol Layer Masking



Production Mapping & Charting

Topographic



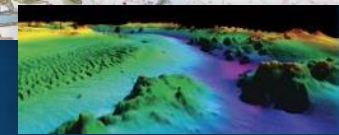
Nautical



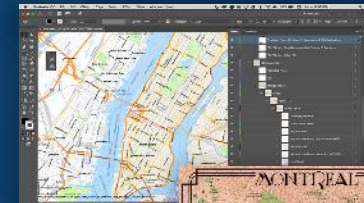
Aeronautical



Bathymetry



Maps for Adobe Creative Cloud



Seattle
Times

Dimensions



Customizable Vector Tiles (Style Editor)



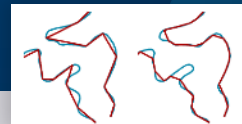
Symbol Effects



Clip to Shape



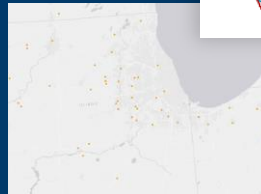
Generalization



Equal Earth Projection



Dynamic Binning



Shoal Biased Contouring



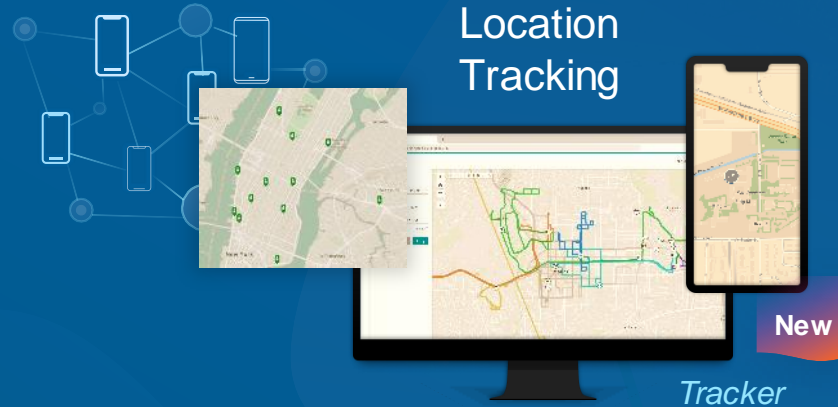
Field Operations

Location-Enabling All Aspects of Field Work

New Capabilities

- Tracking
- Offline Workflows
- Preplanned Routes

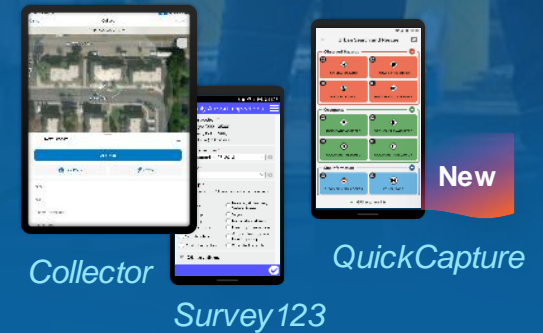
Location Tracking



Navigation



Data Capture

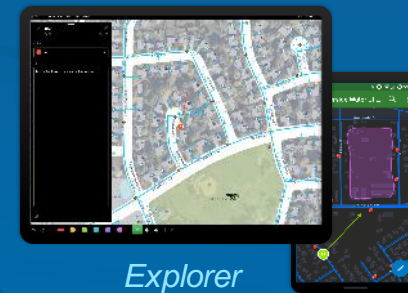


Planning and Management

Workforce



Maps & Mark Up





Tracker for ArcGIS – What is Location Tracking?

Tracker Mobile app (iOS, Android)

- Simple, schedule-driven tracking experience
- Supports offline use
- Optimized for low battery consumption
- Requires an add-on license*

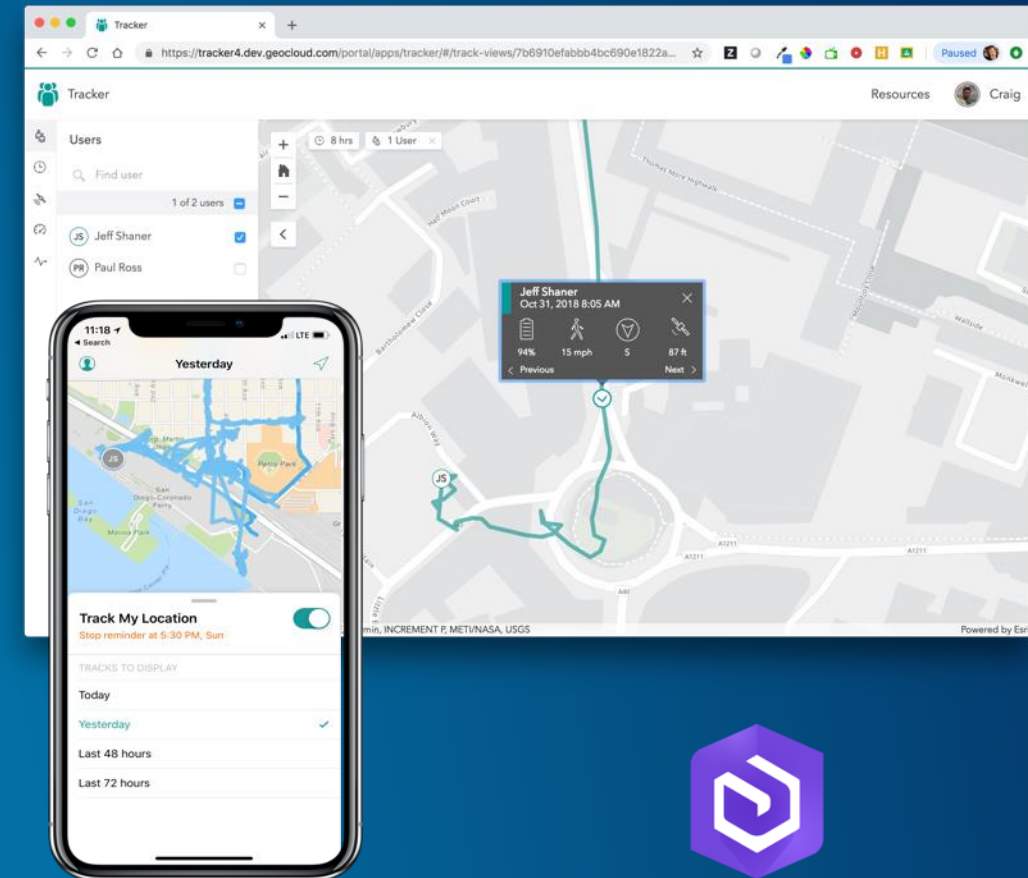
Track Viewer Web app

- Display and manage users and their location history
- See only the users that you have access to (Feature Service views, OBAC)

Release Plan!

New Organizational Capability

- Enable location tracking in their organization
- Single service for storing and managing location tracks
- Requires the **spatiotemporal big data store**

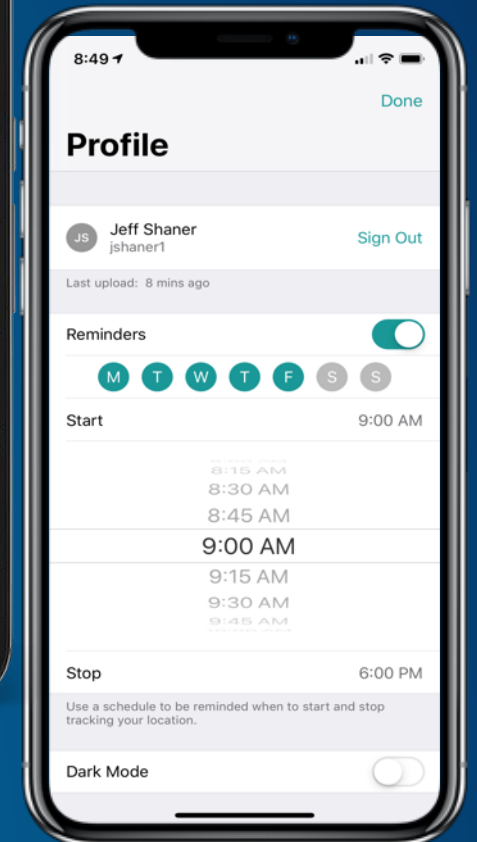
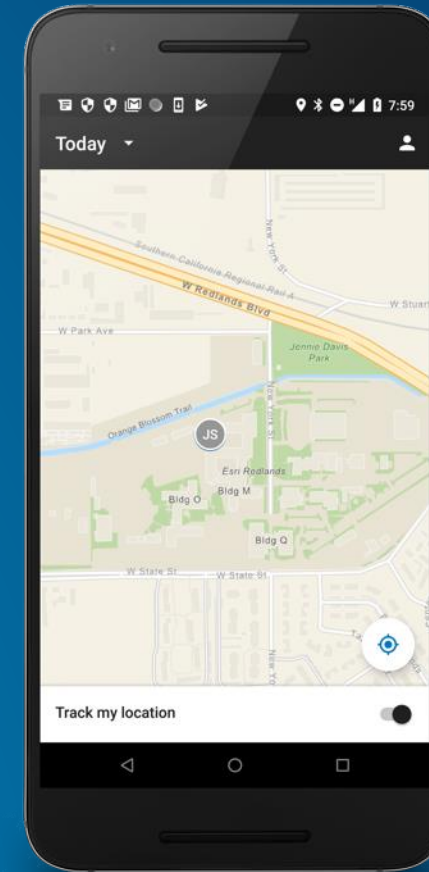


ArcGIS Enterprise 10.7 only!



Tracker Mobile App

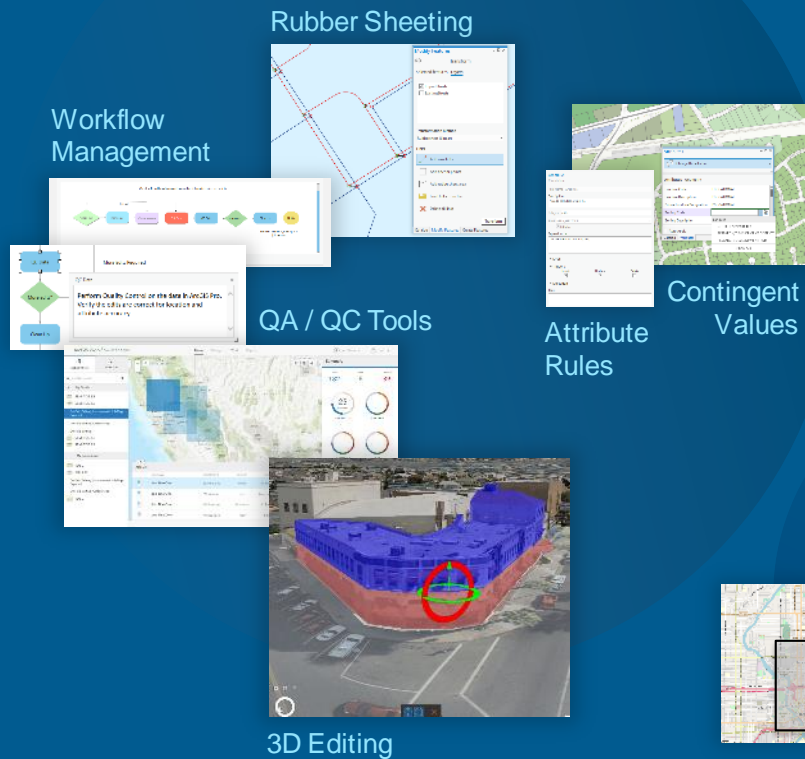
- Mobile user in control
 - Turns on/off tracking
 - Set reminders/schedule to start or stop tracking
- Collect Tracks
 - Tracks are collected using movement with mobile Core Motion and Fitness APIs
- Tracks are uploaded every
 - 10 mins (60 secs if device is being charged and battery is > 20%)
- LKL (Last known location) are uploaded every
 - 60 seconds but configurable to 30 seconds
- Supports offline use
 - Tracks stored locally if connectivity is lost
- Licensing
 - Premium app that works with Viewer+ user type
 - Included with Field Worker user type



Editing and Data Management

Advancing Tools, Workflows and Data Models

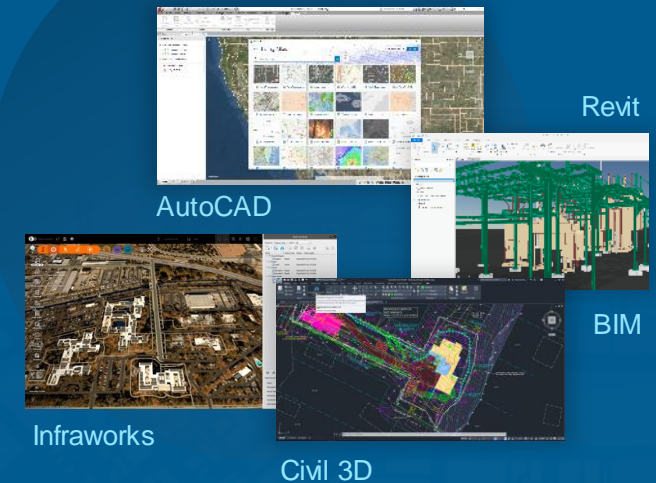
Improved Editing Tools



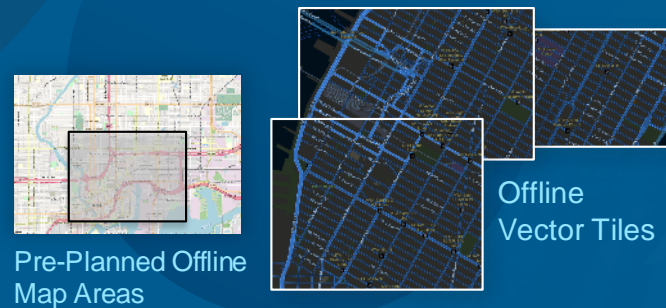
Stronger Industry Models



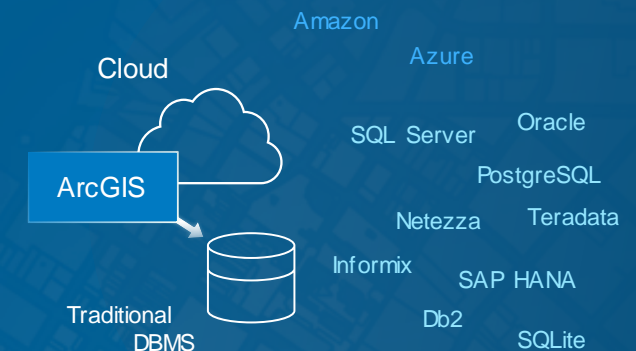
Autodesk Integration



Offline Workflows



Comprehensive Data Management

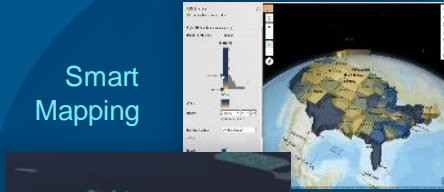


3D Visualization

New and Improved

- 3D Smart Mapping
- Mobile
- Point Clouds
- BIM Support
- Symbology

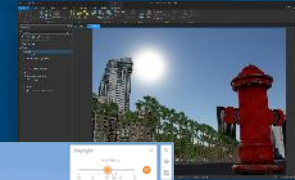
Smart Mapping



Data Visualization



Symbology



3D Symbols

Effects

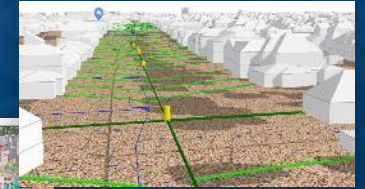


Power Lines



City Modeling

Underground



Lidar

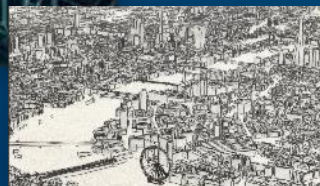


Extrusion

BIM as Scene Layers



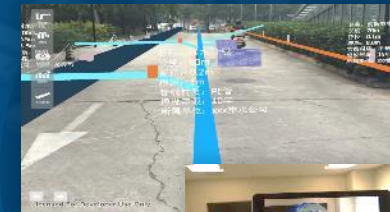
Edge Rendering



Mobile Scene Packages



Augmented Reality / VR



Mobile

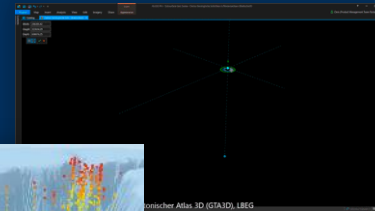
3D Analysis

Volumetrics



Volumetric Slicing

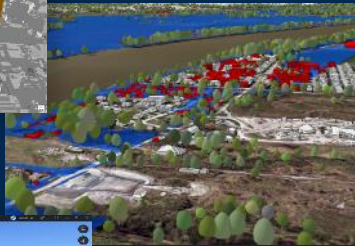
Interactive Slice



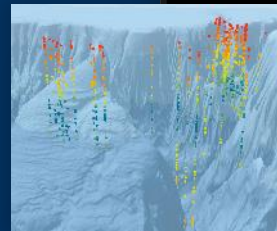
Analytics



Shadow Analysis



Flood Impact



3D Interpolation (EBK)

Apps

Pro



3D GIS

CityEngine



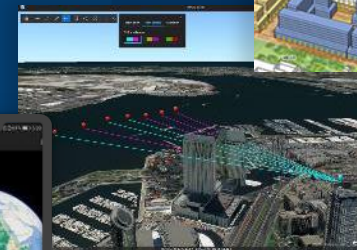
Procedural Modeling

Scene Viewer



Visualization

Earth



3D Visualization and Analytics



Mobile

Elevation Profile



3D Measurement



Lidar to Buildings



Line of Sight & Viewshed

Spatial Analysis and Data Science

Many Improvements

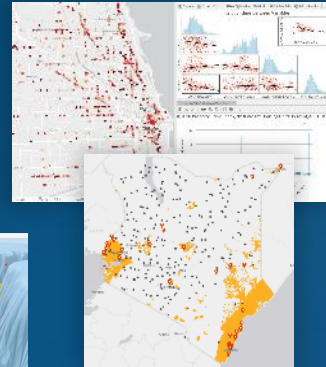
- Functionality
- Scalability
- Accessibility

Spatial Statistics

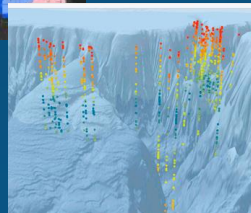
Balanced Zones



Logistical Regression

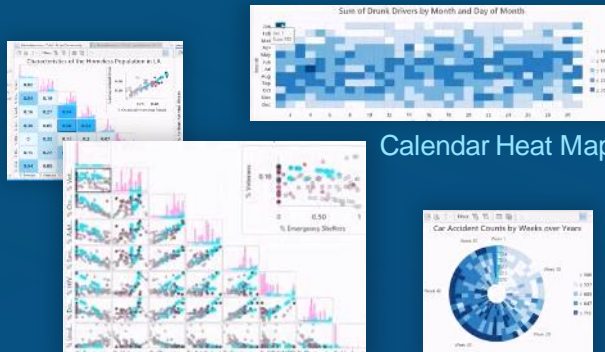


3D Interpolation (EBK)



Forest-based Classification and Regression

Charting



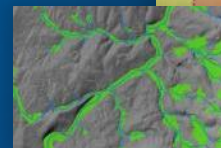
Calendar Heat Map

Scatter Plot Matrix

Data Clock

Raster Functions

Floodplain Delineation

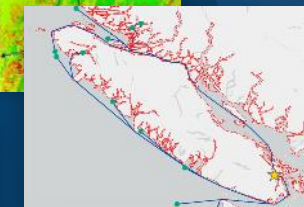


DEM Error

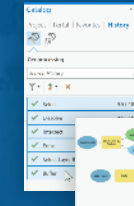
River Classification



Cost Distance



Improved Processing



Tool History to Models



Models to Python



Hosted Python Notebooks

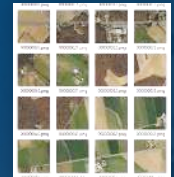
Enterprise

Pro



Scalable GeoAnalytics

Deep Learning



Hosted Python Notebooks For Integration, Modeling and Automation

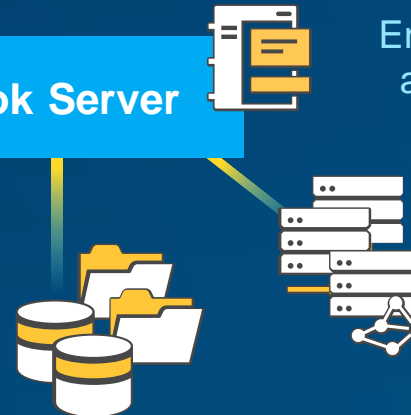
Integrating Distributed Services and Data . . .

. . . The World of Open Science & Big Data



Open Science
Libraries

ArcGIS
Notebook Server



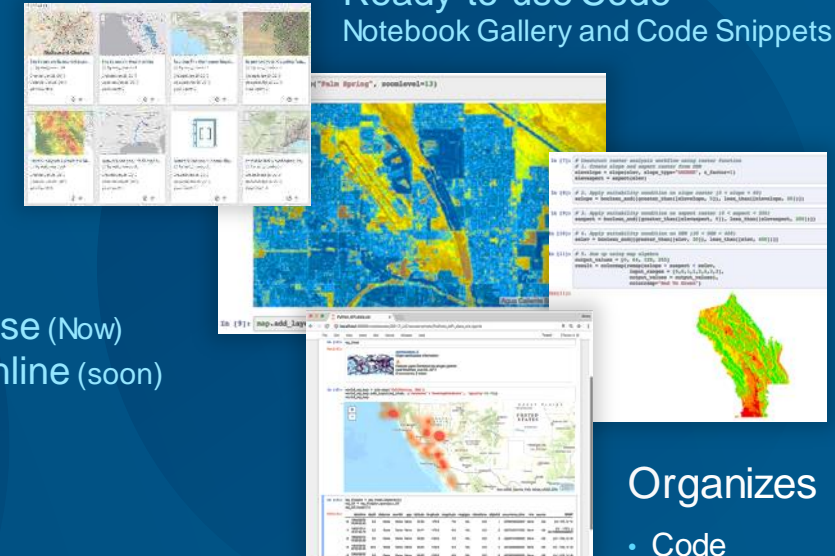
Data Stores / Lakes

Interactive
Computing

Enterprise (Now)
and Online (soon)

ArcGIS Analytic Servers
(Image, GeoAnalytics, Spatial)

Ready-to-use Code
Notebook Gallery and Code Snippets



Organizes

- Code
- Data
- Visualization
- Documentation

Providing Notebooks as Items . . .

. . . and ArcPy Geoprocessing as a Service

AI, ML and Deep Learning Integrating Open Science



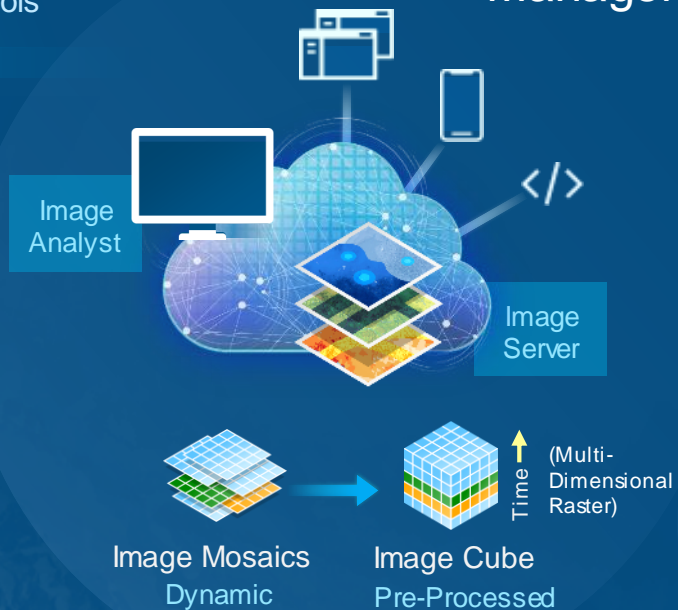
Imagery

A Comprehensive System for Imagery and Remote Sensing

New

- Image Cube Support
- Deep Learning Tools

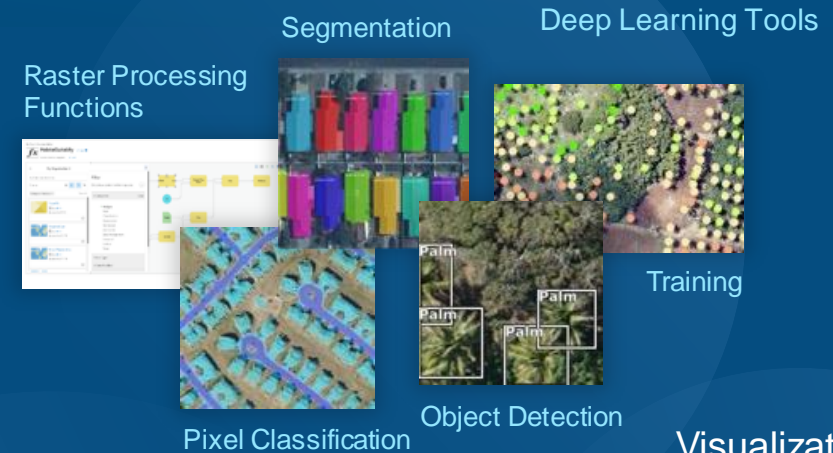
Image Management



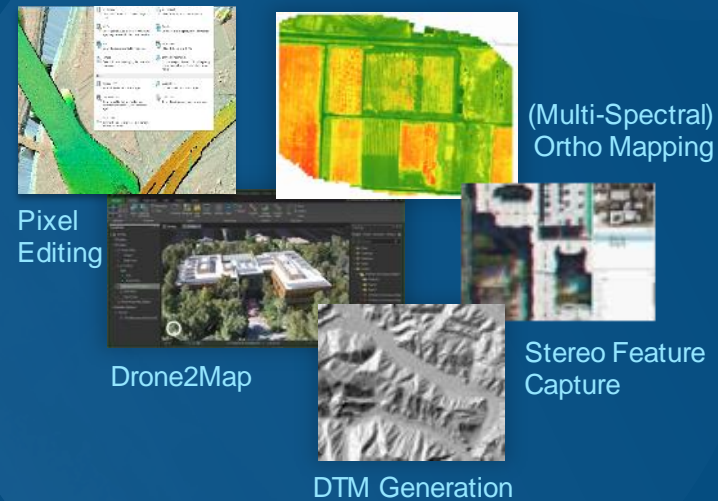
Imagery

Rich Content
All Types & Formats

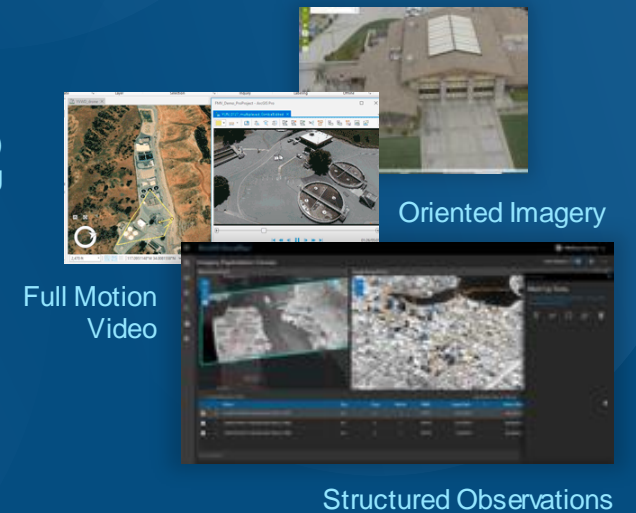
Analysis



Map Production



Visualization & Exploitation



Imagery Exploitation

Web-Based Structured Observation Management

Excalibur

Search &
Discover

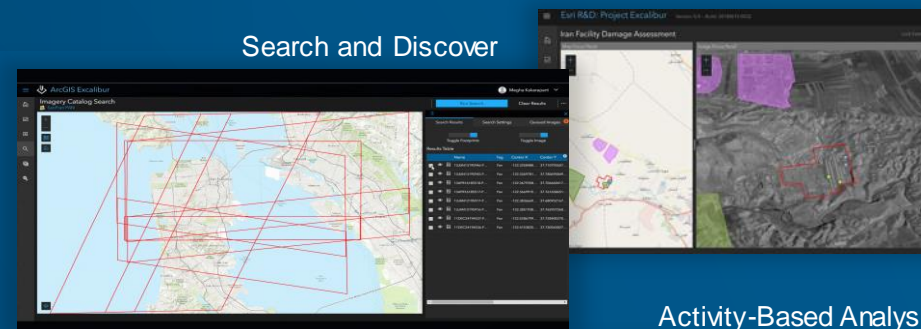
Exploitation
Ortho & Oblique Viewing
Feature ID
Measurement

Analytics
On-the-Fly Processing

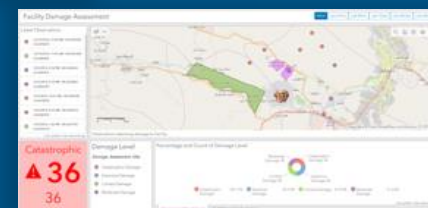
Project Tasking
& Management

Observation

Search and Discover



Activity-Based Analysis



Exploitation



GIS View

Image Space

Delivering Next Generation Imagery Workflows

Real-Time Analytics Integrating Sensor Networks and IoT

Supporting High-Velocity Data Streams
Tracking, Monitoring and Alerting

Improved

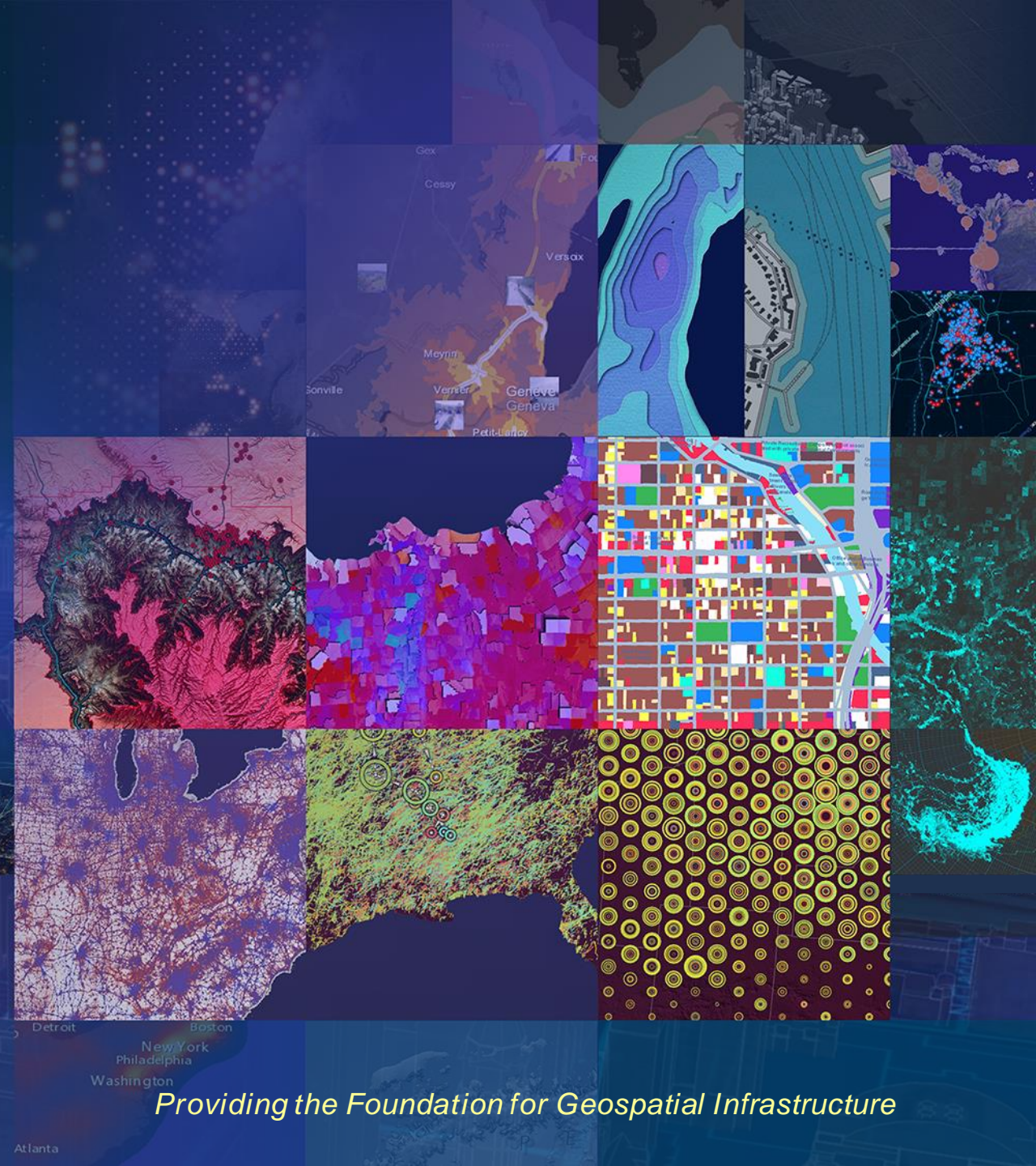
- Performance
- Scalability
- Resiliency
- Cloud Connectors
- Actuation



Enterprise Now . . .
. . . SaaS Coming

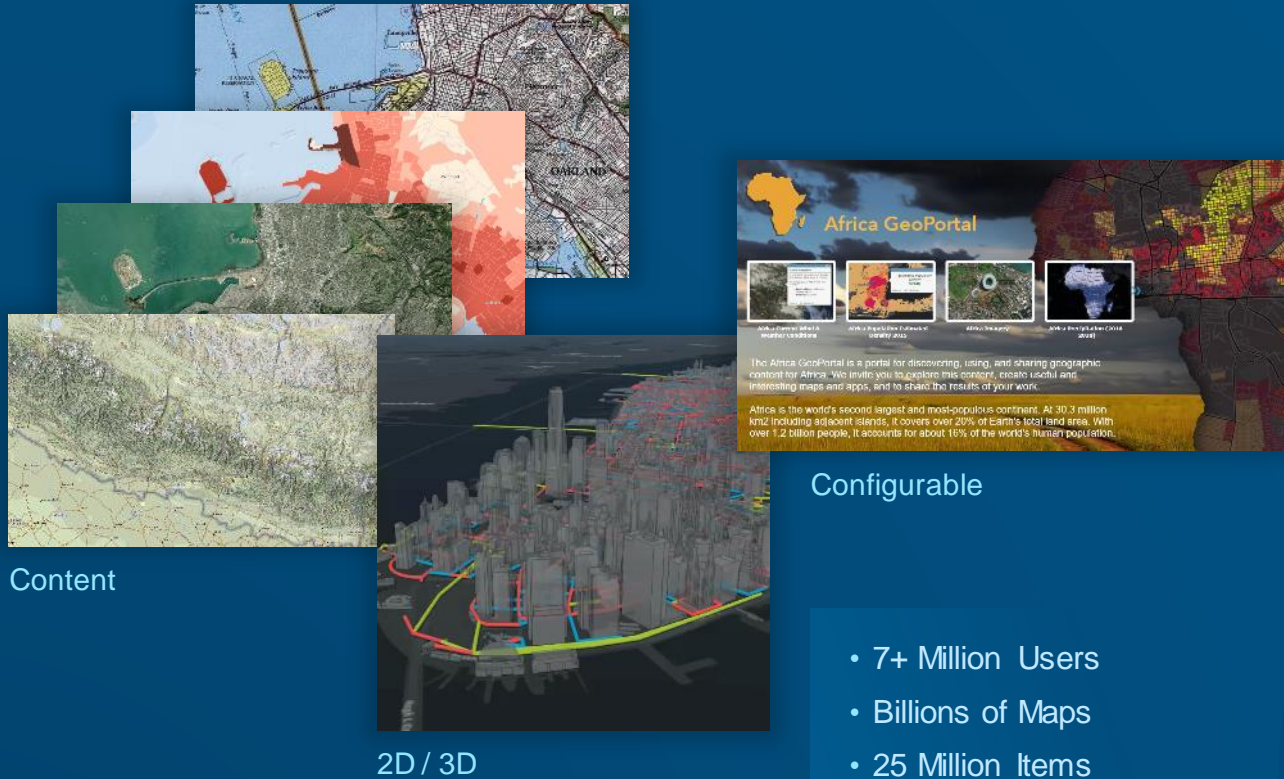
Collapsing the Time from Measurement to Decision Making

ArcGIS Products



Providing the Foundation for Geospatial Infrastructure

ArcGIS Online Complete Mapping and Location Platform



World's Largest Mapping
and Data-Sharing Ecosystem



Configurable

- 7+ Million Users
- Billions of Maps
- 25 Million Items
- 150k Open Datasets

New and Improved

- User Types
- Search
- Large Organization Administration
- Configurable Basemaps (Vector Feature Tiles)
- Smart Mapping Styles
- 3D
- New StoryMaps

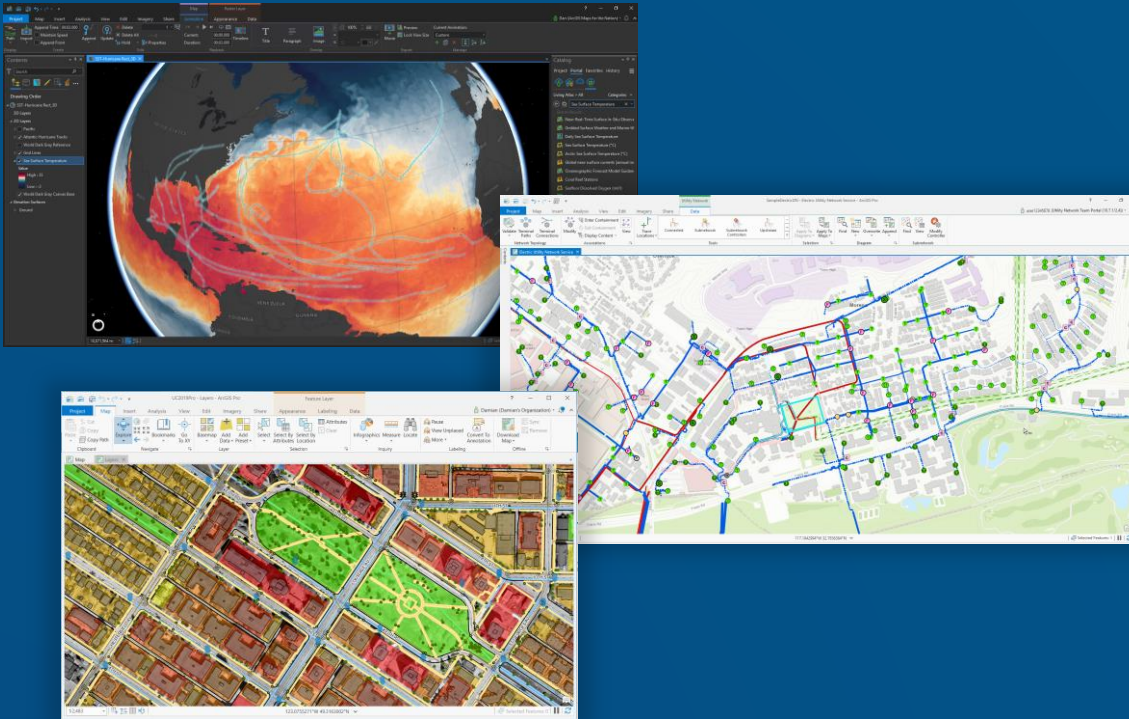
Coming

- New Map Viewer
- Bulk User & Item Management
- Org-to-Org Collaboration
- Tracking
- Notebooks
- Hosted Imagery
- IoT Integration



ArcGIS Pro Professional GIS

Pro 2.4



Advanced Mapping, Visualization,
Editing and Analysis

Improvements

- Utility Management
- Faster Startup
- Editing Tools
- Catalog Preview
- Definition Expressions
- Contingent Attributes

New

- Reports
- Dimensions
- Spell Check
- Publish to Server
- Deep Learning
- Parcel Management

Coming

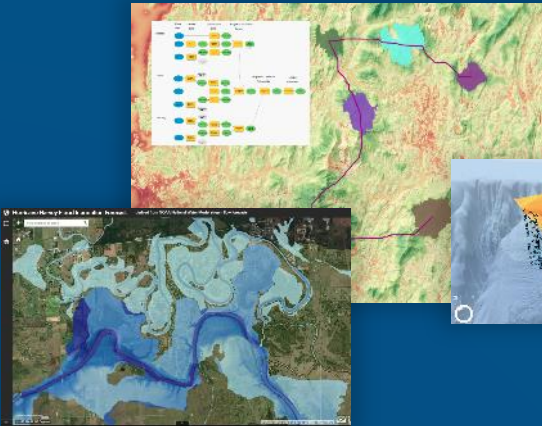
- Offset Printing
- More Parallel Processing
- Voxel Support



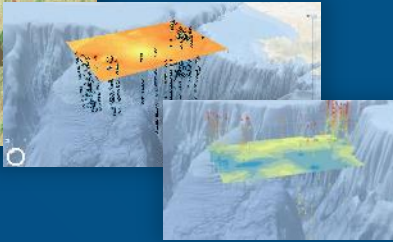
ArcGIS Pro Extensions

Integrating Focused Capabilities

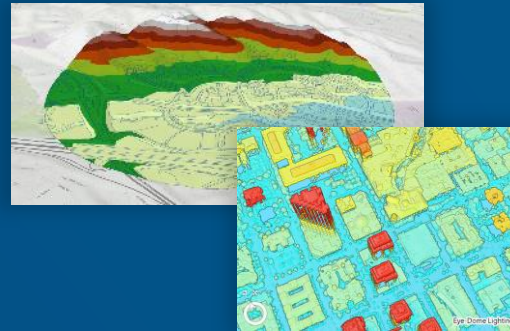
Spatial Analyst



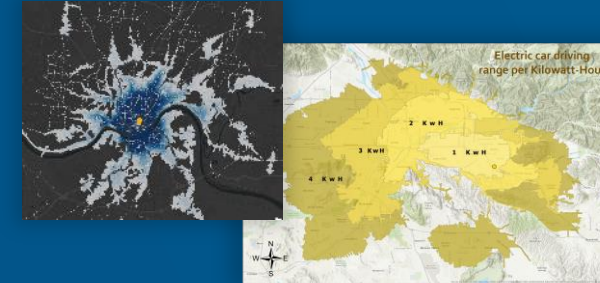
Geostatistical Analyst



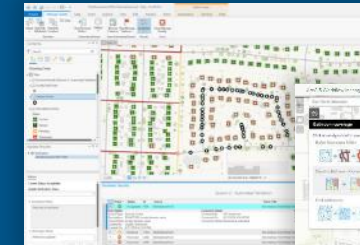
3D Analyst



Network Analyst



Data Reviewer



Workflow Manager

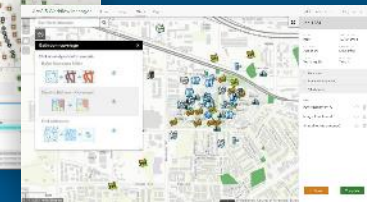
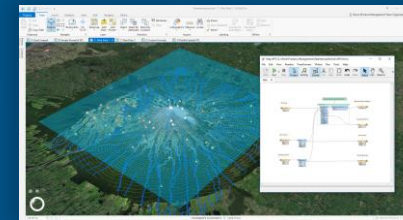
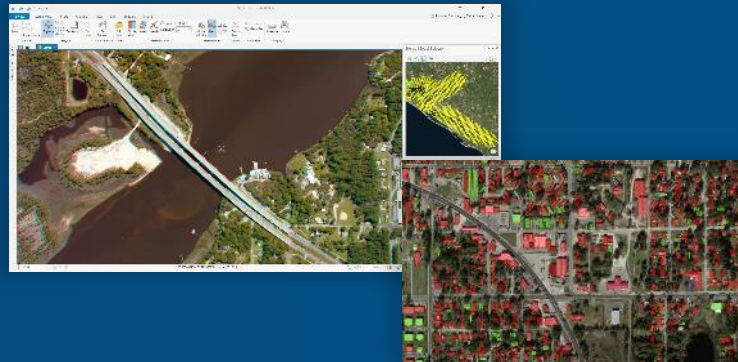
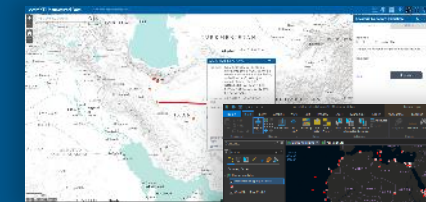


Image Analyst

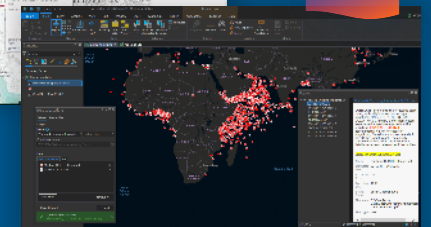


Data Interoperability



LocateXT

New



LocateXT **New Pro Extension**

- Extract from unstructured data
 - Coordinates
 - Dates
 - Attributes
 - Locations
 - Geoprocessing tools

CATALOG OF THE ISOPOD CRUSTACEA TYPE COLLECTION OF THE NATURAL HISTORY MUSEUM OF LOS ANGELES COUNTY

ORDER Isopoda Latreille, 1817
SUBORDER Anthuridea Leach, 1814
FAMILY Anthuridae Leach, 1814

Apanthura californiensis Schultz, 1964

Reference: Pacific Science, 18(3):312, fig. 4.
HOLOTYPE: LACM 55-35.1 (AHF Type No. 5512), female, 11 mm.
Locality: USA, California, Los Angeles County, 18.3 km, 203° T from Santa Monica Pier Light; black mud, 73 m, Hayward grab.
Lat./Long.: 33°51.37'N, 118°34.7'W.
Collector: R/V Velero IV Sta. No. 2998-55. 06 Feb 1955.

Bathura luna Schultz, 1966

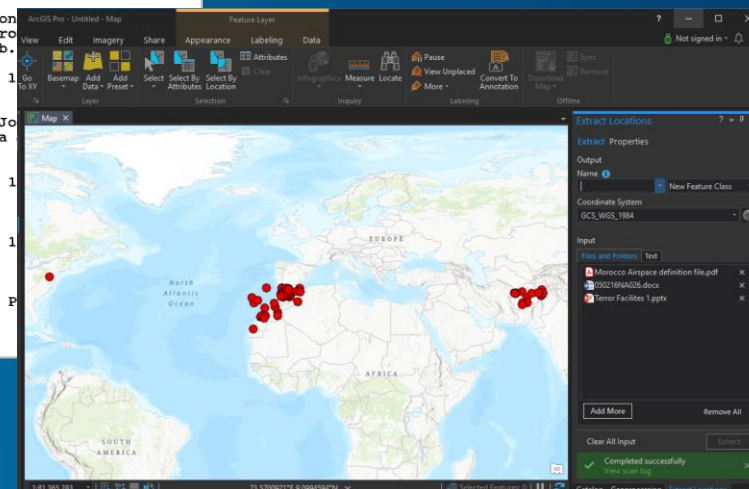
Reference: Allan Hancock Pacific Expeditions, 27(4):12, pl. 7.
HOLOTYPE: LACM 60-80.1 (AHF Type No. 6047), female with marsupium, 21 mm.
PARATYPES: LACM 60-80.4, 9 specimens.
Locality: USA, California, Channel Islands, Tanner Canyon, San Clemente Island, 53.5 km, 236° T from China Point Light; green mud, 1320 m, Campbell grab.
Lat./Long.: 32°32.3'N, 118°54.03'W.
Collector: R/V Velero IV Sta. No. 6832-60. 29 Jan 1960.

PARATYPE: LACM 60-88.3.
Locality: USA, California, San Diego County, Coronado Canyon, 8.6 km, 322.5° T from North Coronado Island; green mud, 794 m, Campbell grab.
Lat./Long.: 32°30.70'N, 117°21.62'W.
Collector: R/V Velero IV Sta. No. 6851-60. 01 Feb 1960.

PARATYPE: LACM 60-87.1.
Locality: USA, California, San Diego County, La Jolla Canyon, 20.0 km, 286.5° T from Point La Jolla; green sandy mud, 775 m, Campbell grab.
Lat./Long.: 32°54.35'N, 117°29.55'W.
Collector: R/V Velero IV Sta. No. 7047-60. 07 May 1960.

Cyathura guaroensis Brusca and Iverson, 1985

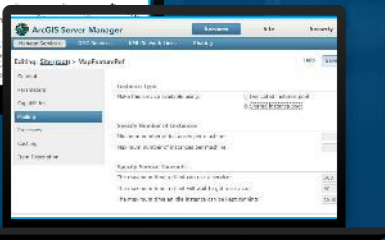
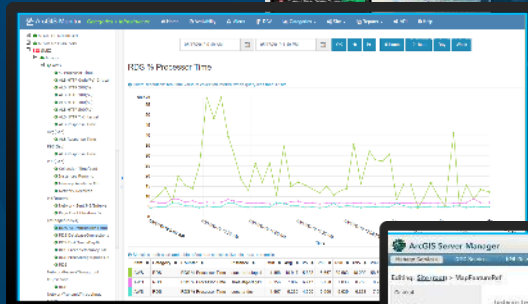
Reference: Revista de Biología Tropical, 33(Supl. 1):fig. 19.
HOLOTYPE: LACM 80-61.1 (AHF Type No. 8012).
PARATYPES: LACM 80-61.2, 5 specimens.
Locality: Costa Rica, Pacific coast, Guanacaste, P



ArcGIS Enterprise Comprehensive GIS for Your Organization



Sites



Enterprise Data Management,
Mapping, Analysis and Collaboration

New and Improved

- User Types
- Reduced Memory (95%)
- Bulk Publishing
- Webhooks
- Hosted Python Notebooks
- Sites
- Machine Learning & AI

Coming

- Containerization
- Microservices
- Large Organization Management
- Intelligent Search

*Runs in Commercial Clouds,
Private Clouds and in Your Own Infrastructure*

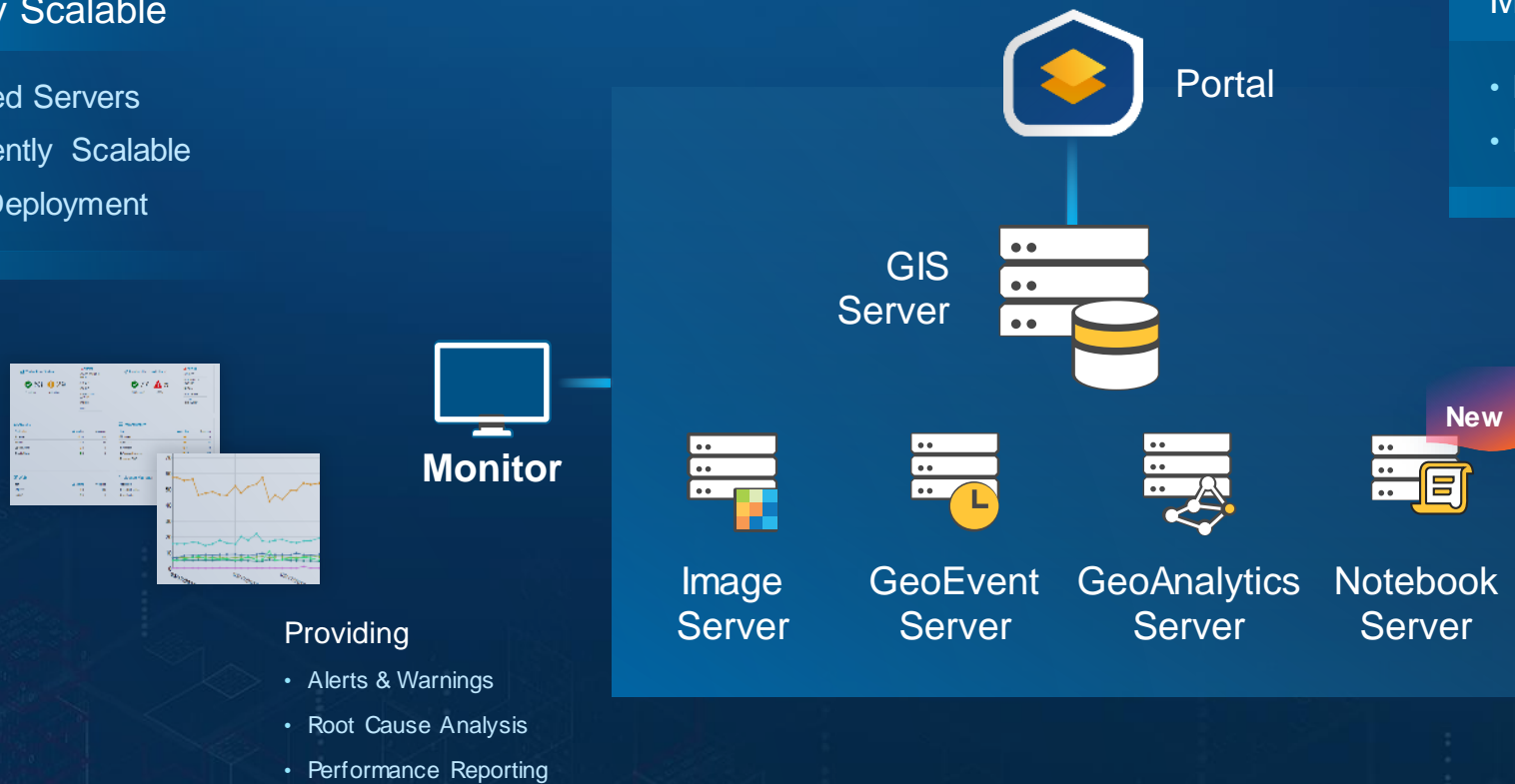
ArcGIS Enterprise Architecture

Modular and Massively Scalable

- Specialized Servers
- Independently Scalable
- Flexible Deployment

10.7.1 Dramatically Reduces Memory Requirements

- More Services
- Less Memory



Easy to Setup and Administer

ArcGIS User Types Provides Flexible Licensing

Delivering Powerful Capabilities Across Your Organization

Viewer



Viewing

Editor



Editing

Field Worker



Creator



Authoring, Mapping & Analysis

GIS Professional



Insights Analyst



For Enterprise and Online

Insights for ArcGIS Opening Location Analytics to Everyone

Mapping

Thematic

Smart Mapping

Analytics

- Spatiotemporal
- Statistics
- Predictions
- Link Analysis

Charting

Bar, Column,
Pie, Scatter,
Box, Data Clock,
Heat . . .

Exploratory Mapping & Analysis

Spatial /
Temporal

Link Charts

Charts

New and Improved

- Link Analysis
- Presentations & Reports
- Public Sharing
- Python & R Integration

Providing Powerful Data Visualization and Analytics . . .

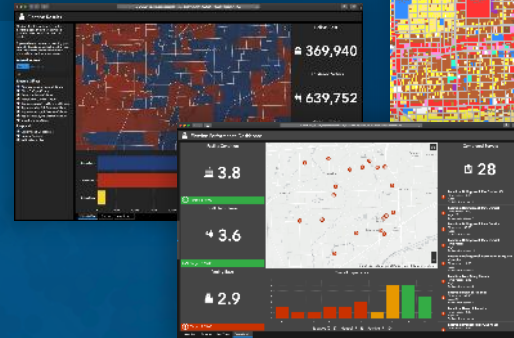
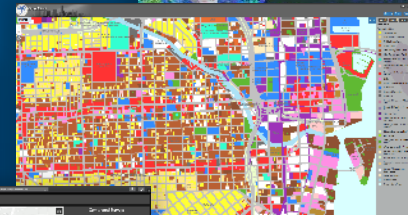
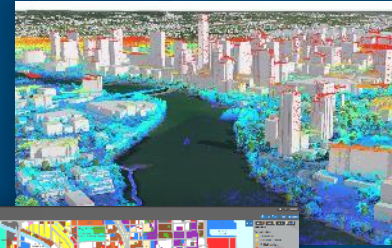
ArcGIS Solution Templates

Ready-to-Use Industry Configurations

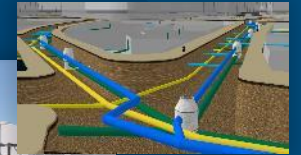
Tools
Data Models
Apps
Maps
Widgets
Dashboards
Comprehensive Workflows
Add-Ins

- Popular (500K Downloads)
- Extensive (450+)
- Open Source
- Fully Supported
- Free

Local & State Government



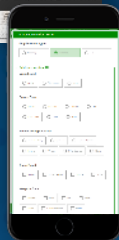
Utilities & Telecom



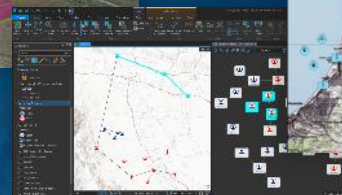
Protected Area Management



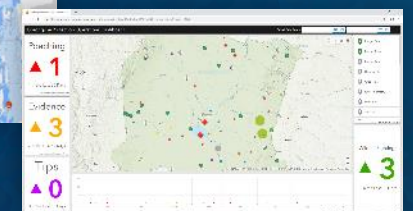
Coming



Defense & Security



Emergency Management & Public Safety



Helping Users Realize Value Quickly . . .

ArcGIS App Builders

Enabling Everyone to Build Apps

Web AppBuilder

New Widgets

New

Infographics

New

Visibility

Simple and Powerful

700,000+ Web Apps Created and Deployed

Experience Builder
(in Beta Soon)

Integrated
2D / 3D

Next
Generation

Mobile First

App
Management

JavaScript 4.x

No Programming Required

Esri Geo-Enabled Systems

Directly Supporting Focused Workflows

Indoors
Indoor Mapping



Hub
Engagement



Business Analyst
Business Intelligence



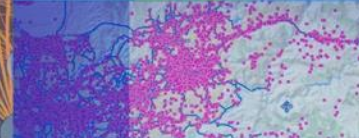
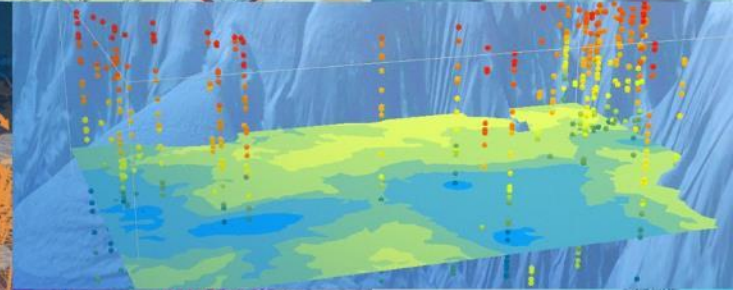
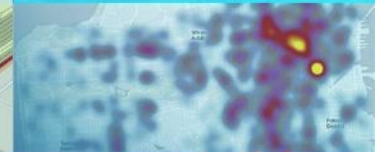
Urban
Urban Planning



Mission
Awareness and
Collaboration
(Coming)



Esri Geospatial Cloud



Indoors An Enterprise Mapping System for Operations and Mobility

GIS for Asset, Space and Building Management . . .
. . . In a Single System

Operations

Safety & Security
Emergency Management
Problem Reporting
Asset Management

Portfolio Management

Buildings
Infrastructure

Data Management

System of Record
CAD / BIM
Floor Plan Integration

Wayfinding

Employee Routing
Indoor Positioning
Public Kiosk
Tracking

Stakeholders

- Business Owners
- Operators
- Employees
- Visitors

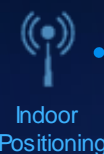
Floor Plans



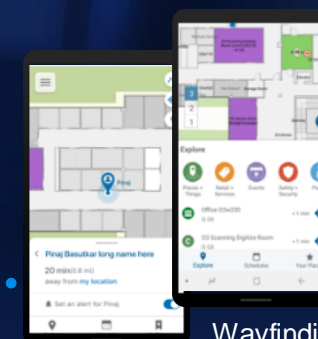
3D Maps



Workplace Analytics



Indoor Positioning



Wayfinding

Location Sharing

Hub System for Enabling Community Engagement

Connecting Organizations & Communities of Interest

Initiatives

Website
Apps & Content
Engagement Tools
Crowdsourcing

Organize Communities

Identities and Groups
Sharing Data
Events and Discussions
Participation/ Feedback

Open Data

Multiple Formats
Open APIs
Maps & Charts

FREE

Stakeholders

- Governments
- Communities
- Universities
- NGOs
- Citizens
- Staff

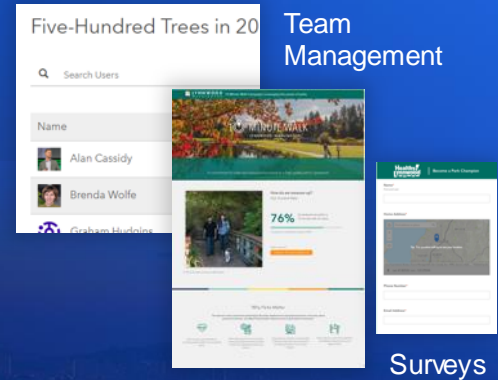
Event Calendars



Initiatives



Performance Reporting



Team Management

Surveys

Open Data



Urban System for Planning and Managing Urban Development

Transforming Planning Operations and Design

Enabling Smart Cities

Plans

Land Use
Zoning
Overlays

Projects

Buildings
Infrastructure

Indicators

Baseline
Suitability
Impact Models

Visual, Analytic & Interactive

Stakeholders

- Government
- AEC
- Real Estate
- Citizens
- NGOs

Track and Evaluate Projects

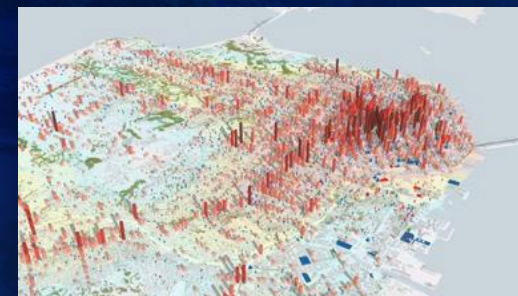


Immersive

Create
Planning Scenarios



Report and Engage



Mission System for Geospatial Collaboration and Awareness

Supporting Operations and Management . . . End-to-End

Mission Planning

Define Area
Assign People
Provision Data

Tactical Situational Awareness

Peer-to-Peer Communication
Location Tracking
Chat & Messaging

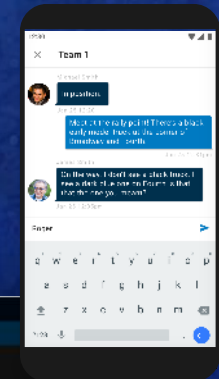
Mission Management

Monitor Activities
Engage Team

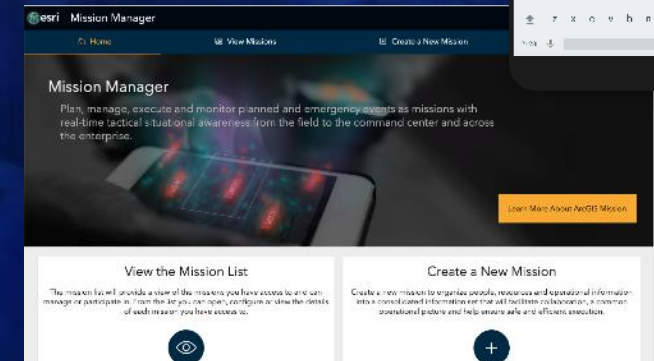


Stakeholders

- Emergency Responders
- Security Operations
- Law Enforcement
- Humanitarian Aid

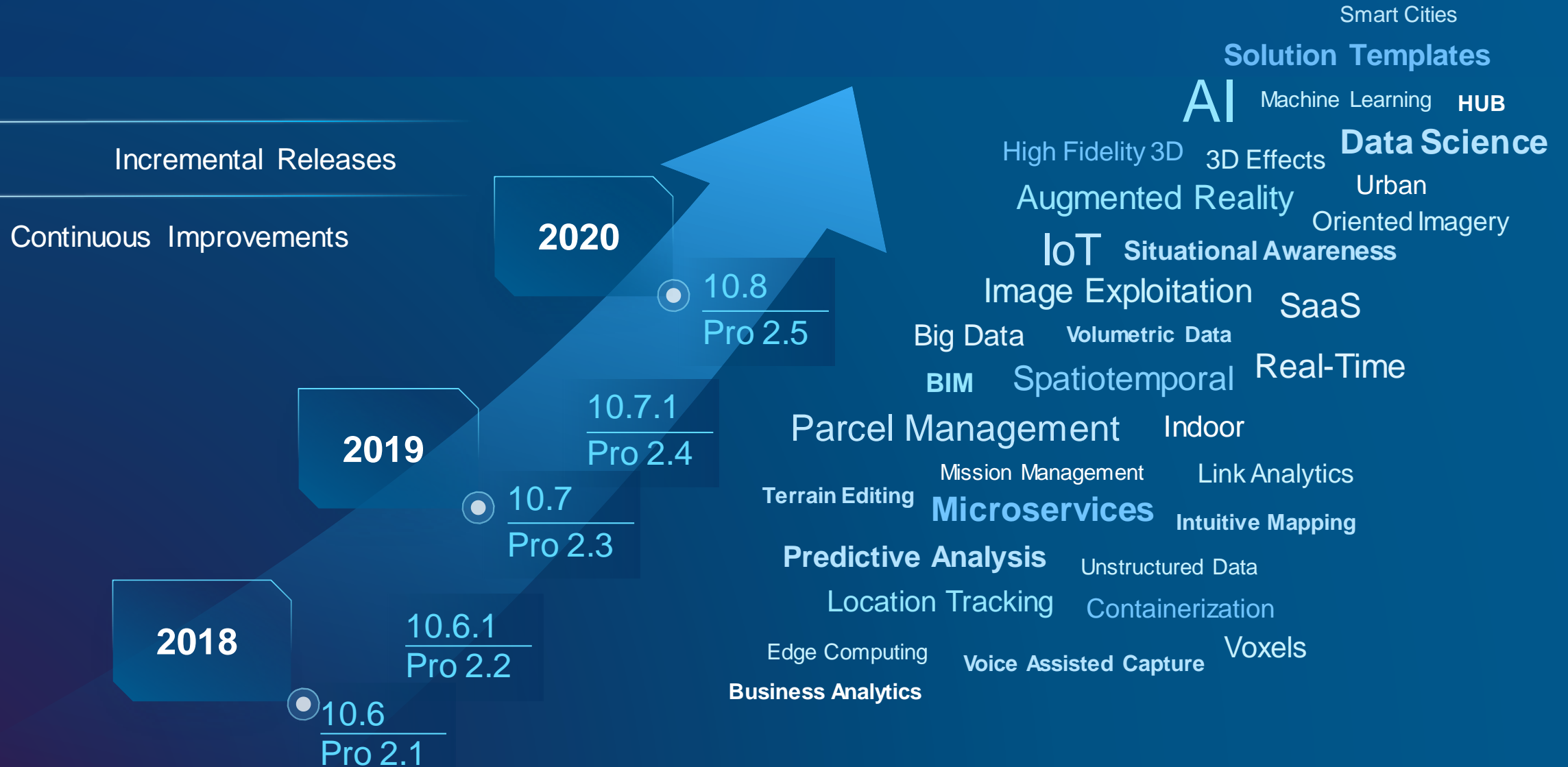


Mobile
Responder
App



Mission Manager Web App

What's Next



... Continued Focus on Quality, Performance and Innovation

| UC 2019

Esri User Conference

