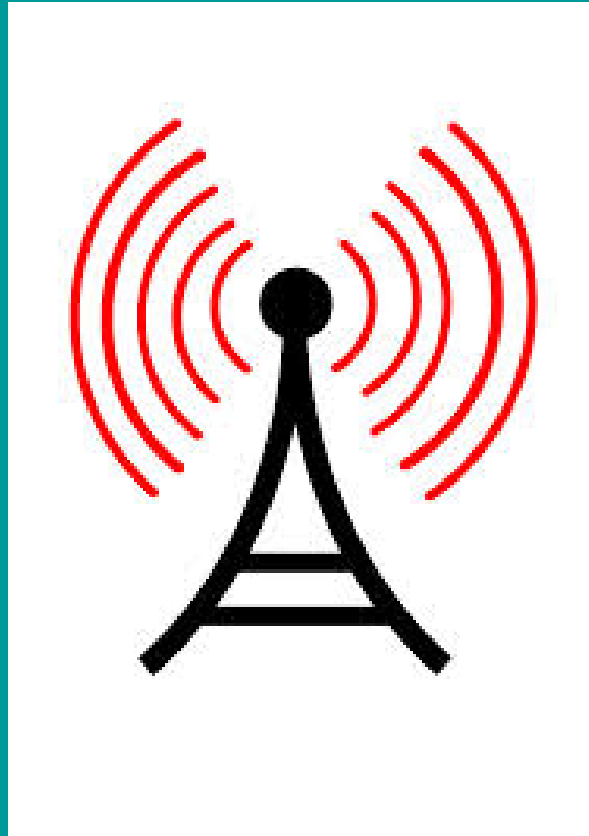


2014 Symposium by the Sea – Mobile GIS
September 19
9:00 am – 4:30 pm

Oregon Coast Community College - 400 SE College Way
Newport, OR 97366



THANKS!

Oregon Coast Community College



enjoy learning...for life





What is URISA, OR-URISA, and CCGISUG?

- URISA is an international multidisciplinary professional association that brings the spatial data community together to share concerns and ideas.
- OR-URISA a chapter of URISA.



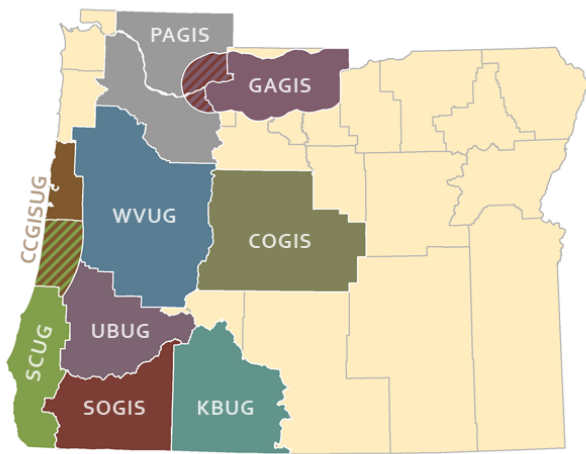
- Central Coast GIS User Group (CCGISUG) is a section of OR-URISA

What is OR-URISA?

[HOME](#) [ABOUT](#) [GIS IN ACTION](#) [MEMBERSHIP](#) [SECTIONS](#) [YOUNG PROFESSIONALS](#) [SIGS](#) [EVENTS](#)

[CCGISUG](#) [COGIS](#) [CPGIS](#) [GAGIS](#) [KBUG](#) [PAGIS](#) [SCUG](#) [SOGIS](#) [UBUG](#) [WVUG](#)

Oregon & SW Washington URISA Sections

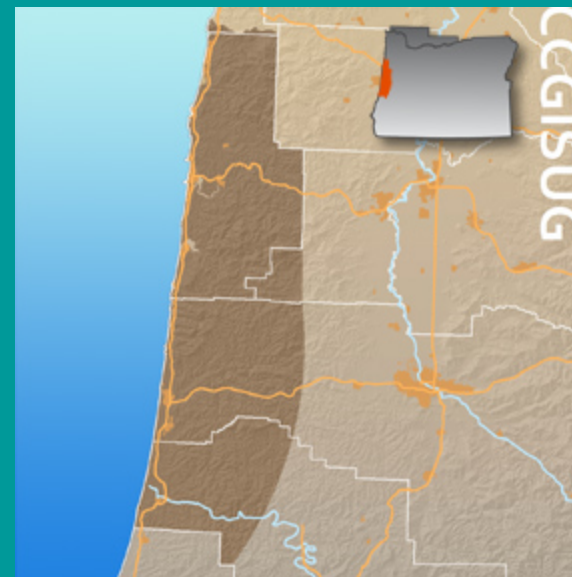


- [Portland Area GIS Users Group](#) (PAGIS) representing the Portland/Vancouver Metropolitan Area
- [Willamette Valley GIS Users Group](#) (WVUG) representing the cities of Salem and Eugene and other areas in the greater Willamette Valley
- [Umpqua Basin GIS Users Group](#) (UBUG) based out of Roseburg
- [Southern Oregon GIS Users Group](#) representing the Medford and Ashland areas
- [Central Oregon GIS Users Group](#) (COGIS) covering Deschutes, Crook, and Jefferson counties
- [Klamath Basin Users Group](#) (KBUG) based in the Klamath Basin
- [Gorge Area GIS Users Group](#) (GAGIS) covering the Columbia River Gorge.
- [Central Coast GIS Users Group](#) (CCGISUG) covering the central Oregon coast.
- [South Coast GIS Users Group](#) (SCUG) covering Coos and Curry counties.

The Oregon and SW Washington URISA Chapter covers a large geographic area that has diverse needs and interests. The area features many active Sections (User Groups) that conduct frequent meeting, trainings, and workshops.

We encourage you to participate in area events and to get involved with a local section.

© ORURISA



[HOME](#) [ABOUT](#) [GIS IN ACTION](#) [MEMBERSHIP](#) [SECTIONS](#) [YOUNG PROFESSIONALS](#)

[Young Professionals](#) [Oregon GIS Association](#) [PDX GeoSpatial Open Source](#)

Special Interest Groups

The Oregon & SW Washington Chapter of URISA has several Special Interest Groups that actively promote activities and causes. These include:

- [Young Professionals](#) - The mission of the OR-URISA Young Professionals is to provide the young professional geospatial community with the resources to develop and maintain outstanding careers. Chief among these resources is interaction with industry leaders through mentorship, internship opportunities, and workshops. In addition, the group aims to share its knowledge of emerging GIS technology and techniques with the broad geospatial community, industry professionals, and the public.
- [Oregon GIS Association](#) - that promotes the exchange of information and knowledge of GIS Coordinators in Oregon.
- [PDX Open Source Geospatial Users Group](#) - that promotes the use and knowledge of open source software and applications

© ORURISA




<https://www.flickr.com/photos/mrmonochrome/165350138/>

CC-by

Next CCGISUG meeting November 12th at ODFW

OREGON &
SOUTHWEST
WASHINGTON



Email

Password

☐ Remember me

Login [Forgot password](#)

HOME

ABOUT ▸

GIS IN ACTION

MEMBERSHIP ▸

SECTIONS ▾

YOUNG PROFESSIONALS

SIGS ▸

EVENTS

CCGISUG ▾

COGIS ▸

CPGIS

GAGIS ▸

KBUG

PAGIS

SCUG

SOGIS

UBUG

WVUG ▸

CCGISUG - Home

2014 Mobile GIS Symposium

Archive

Welcome to the Central Coast GIS Users Group

The Central Coast GIS Users Group (CCGISUG) was formed to promote networking between GIS professionals, students, and others on the Central Oregon Coast involved in mapping and geospatial technologies and to provide the opportunity for them to exchange ideas and experiences; address common problems and concerns; obtain advice; and participate in training and education. We meet bimonthly on the second Wednesday from 12:15 to 1:45. Membership is free!

For more information or to join our listserv, please contact Sandy Gruber at sandyg@lincolncity.org


Upcoming Meeting Schedule

January 15, 2014
ODFW Newport
12:15-1:45
[Agenda](#) | [Minutes](#)

March 12, 2014
EPA Newport
12:15-1:45
[Agenda](#) | [Minutes](#)

May 14, 2014
Lincoln County
12:15-1:45
[Agenda](#) | [Minutes](#)

July 9, 2014
Lincoln City
12:15-1:45





• Our great presenters!

AGENDA

9:00 am – 9:15 am: Welcome, Introductions, Overview, OR-URISA

9:15 am – 9:30 am: Overview of Topic - What is mobile GIS? What is GPS?

9:30 am – 10:15 am: John Sharrard (ESRI) - Catching up with Esri's mobile GIS

10:15 am – 11:00 am: Jim Lahm (Elect Data Corp) - Using ArcGIS Mobile and
Trimble Positions with ArcGIS 10.2 Tips and Tricks

11:00 am – 11:30 pm: BREAK AND DISCUSSIONS

11:30 pm – 12:10 pm: (ODOT) - An overview of the Oregon Realtime Geographic
Network (ORGN) Technology and system (40 min)

12:10 pm – 1:30 pm: LUNCH

1:30 pm – 2:15 pm: Craig Greenwald and Rich Ash (GeoMobile Innovations Inc) -
Working with Real-Time High Precision GPS/GNSS

2:15 pm – 2:45 pm: Laura Stimely (DOGAMI) Oregon Beach Morphology Studies
using RTK-DGPS

2:45 pm – 3:10 pm: BREAK AND DISCUSSIONS

3:10 pm – 3:40 pm: Matt Freid (City of Portland) - Discover Portlandmaps - New
Easy Access to Public Data (30 min)

3:40 pm – 4:00 pm: Eric Halverson (CLPUD) - Transmission Line Maintenance
Work using Google Earth and iOS Tools (20 min)

4:00 pm – 4:15 pm: Closing and Cleanup

4:30 pm – : Rogue Ales – Bay Front Location - After Hours Fun
748 SW Bay Blvd Newport, OR

THANKS!

- Many individuals and organizations pulled this together with the idea, planning, etc.



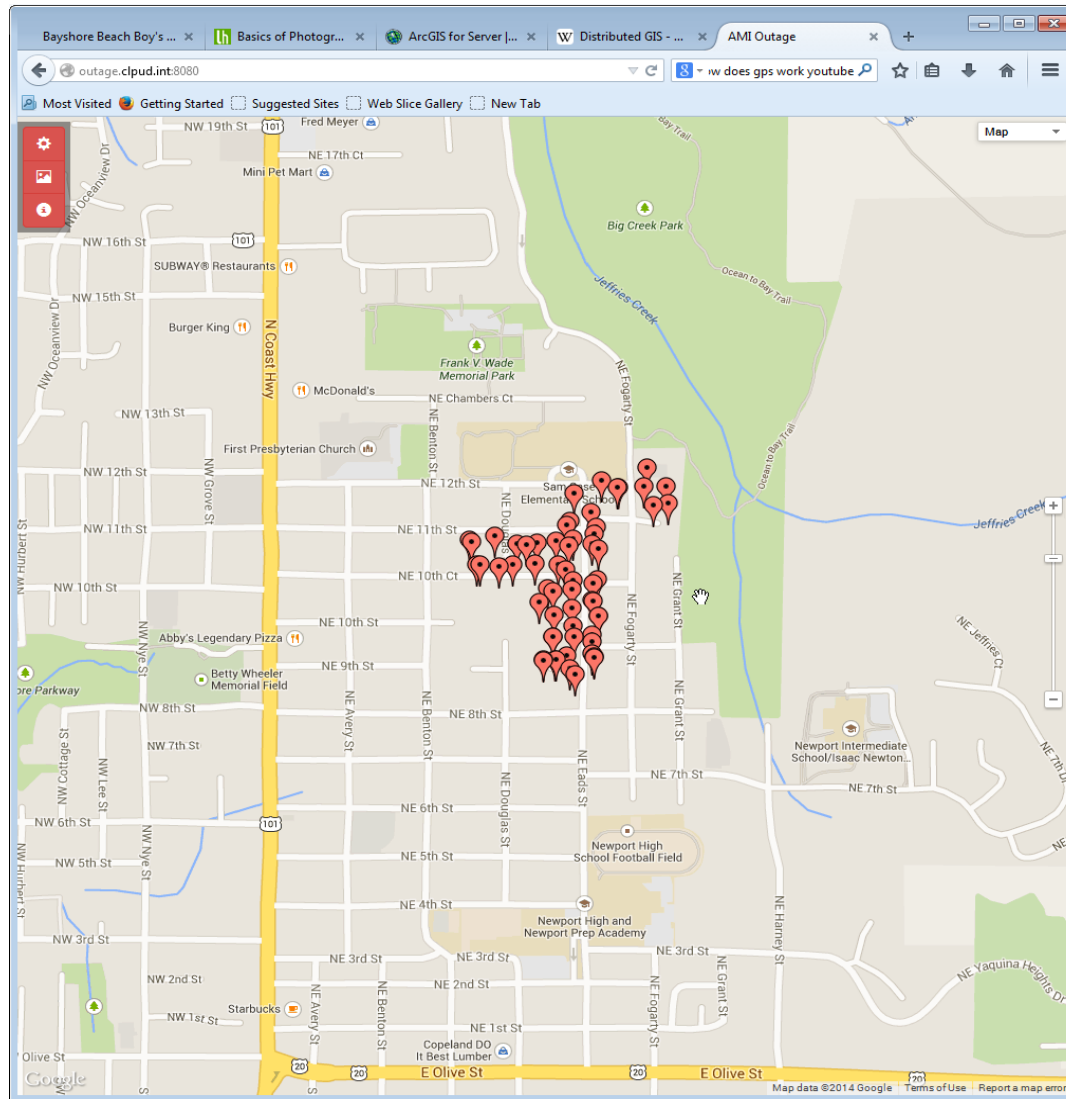
- If you need anything ask a CCGISUG'er



CCGISUG

Symposium By The Sea 2014

Mobile GIS



Why Mobile GIS

- We want to Present Relevant Topics
 - We asked you last year
- We all use it or want to use it
- It's the real world
- where the action is
- Its where the data is
- Its where we'd rather be?

What is Mobile GIS

- Wikipedia takes you to the Main Geographic Information System Page
 - Field Data Collection
 - Forestry
 - Web Mapping
 - Google Earth
 - Bing
- What do we use it for today
 - Field Data Collection
 - Forestry
 - Natural Resources
 - Land Use Planning
 - Infrastructure
 - Highway/Utility
 - Office Post Processing
 - Differential Correction
 - Convert GPS to GIS
 - “Best Practices”
 - Make it as easy and accurate as possible



What is Mobile GIS

- Your Phone
 - Location Services
 - I Need Starbucks Siri!
 - Navigation
 - Driving Directions
- Crowd Sourcing
 - Map a Pothole or Broken Streetlight
- Construction Staking/Precision Data Collection
 - Real Time GPS Correction

Concepts and Challenges

- Data Sync/Security
- UI
 - Touch Devices and Gloves
 - Bright Sunlight
 - Limit typing
 - Default Values
 - Valid Values
 - Data Dictionary
 - Database Domains
 - User Culture Challenges
 - Old Dogs and New Tricks

Drivers, Why Bother

- As we've said "It's the Real World"
- We need to collect thing
- We need to find things
- We need to bring data to and from the office
- And we need to do all of this in a efficient and accurate manner
- So we hope what you see here today will help you meet those goals