



ArcGIS Experience Builder: An introduction

John Sharrard, Esri Solution Engineer

jsharrard@esri.com

What is ArcGIS Experience Builder ?

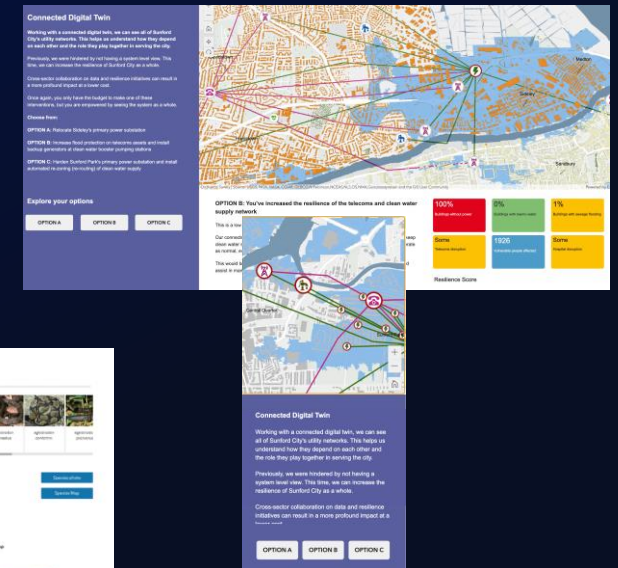
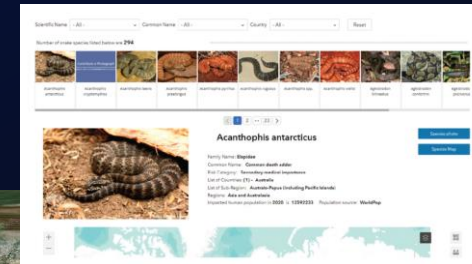
Highly configurable

- Build web apps and pages
 - Explore **design** decisions with templates
 - Access ready-to-use **tools**
 - build custom tools
- Data driven
- Modern interface



ArcGIS Experience Builder Key Features

- Mobile optimization
- Flexible Design
- 2D and 3D in one app
- Interconnection between widgets
- Integration with other ArcGIS apps
- Extensibility





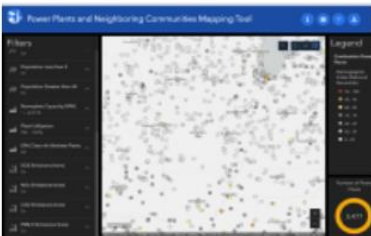
Southeast AK Herring Surveys 2021

ADF&G Commercial Fisheries Southeast AK - Region 1 herring survey data collected using Esri Field Maps app are shown in these interactive maps.



Is My River Fit to Play in?

The Rivers Trust has released this interactive map which aims to help shed the light on the reality of sewage pollution and allow river users to weigh up the risks before taking to the water.



Power Plants and Neighboring Communities Mapping Tool

The map identifies the locations of power plants and highlights the key demographics of people living within three miles of those plants.



ASEAN Biodiversity Dashboard

The ASEAN Centre for Biodiversity and NatureServe created the ASEAN Biodiversity Dashboard to provide access to an interactive, online platform for visualizing trends and geographic variation in biodiversity indicators.



RenewMI Project Viewer

This project viewer contains past and present projects from the Remediation and Redevelopment Division (RRD). These are state-funded environmental remediation projects, as well as a few non-state funded remediation sites of interest.



Kansas Situation Report

The Kansas Situation Report brings together data from Emergency Management, Weather and Mapping organizations to provide the most up-to-date and accurate information possible in support of emergency response, situational awareness and preparedness across the State of Kansas.



Heinz Field Explorer

Built by Houseal Lavigne Associates, LLC., this app explores seating and beer distribution at Heinz Field in Pittsburgh, PA.



Empowering Photogrammetry with SURE Software

SURE software, along with ArcGIS, enables users to seamlessly capture, process, and analyze high-quality 3D data from imagery and LiDAR data.



Mars2020 Perseverance Rover

This web app tracks the progress of Perseverance Rover and Ingenuity Helicopter on the surface of Mars in both space and time.



Ohio Sentry Hazard Awareness

Hazard awareness maps for the watch office, including current and severe weather outlook, flooding potential, hurricane tracker, drought, earthquakes and wildfires.



Gray's Reef National Marine Sanctuary

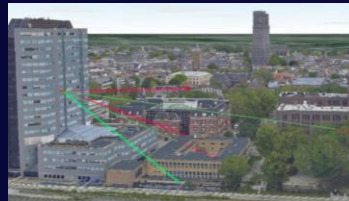
Help conserve the incredible marine resources of Gray's Reef National Marine Sanctuary with this virtual fishing guide.



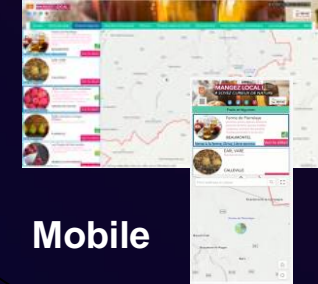
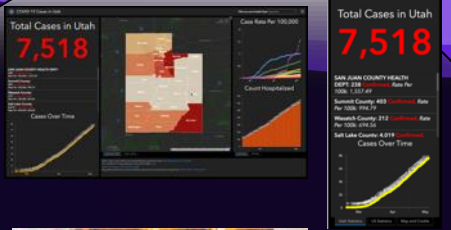
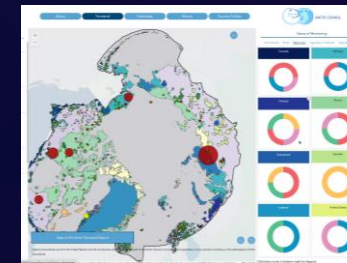
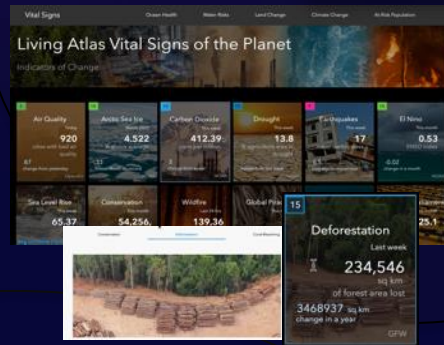
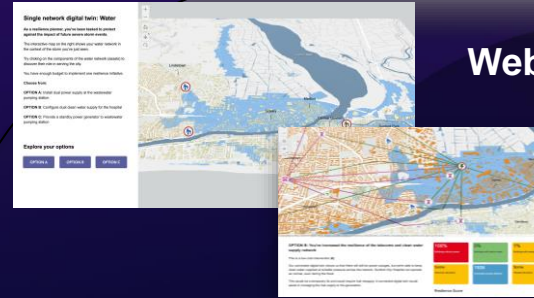
PhotoMappers Public Portal

NAPSG Foundation hosts a volunteer-powered platform for quickly finding, mapping, and sharing the location of disaster photos found in news stories and social media platforms.

3D

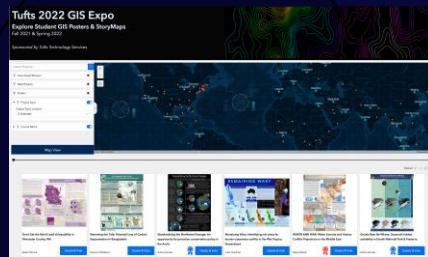


Web pages

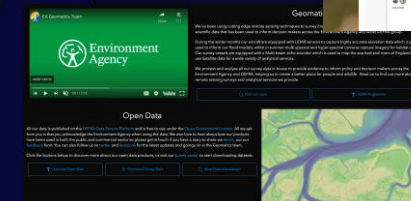
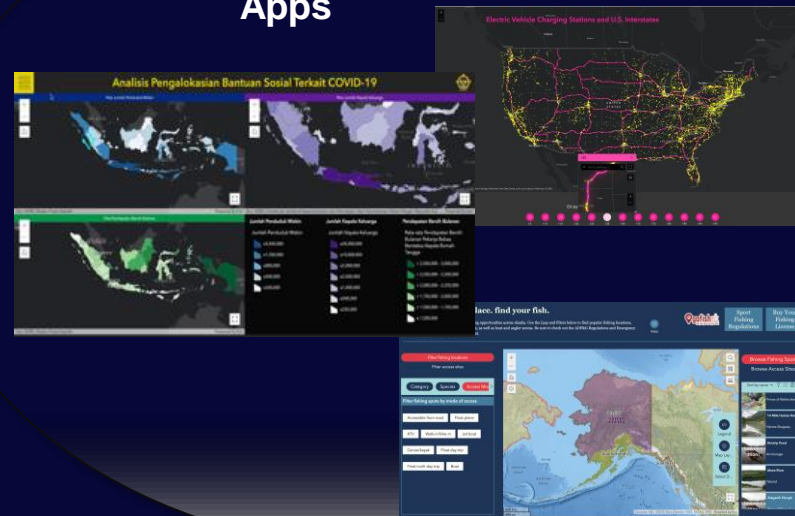


Mobile

Gallery



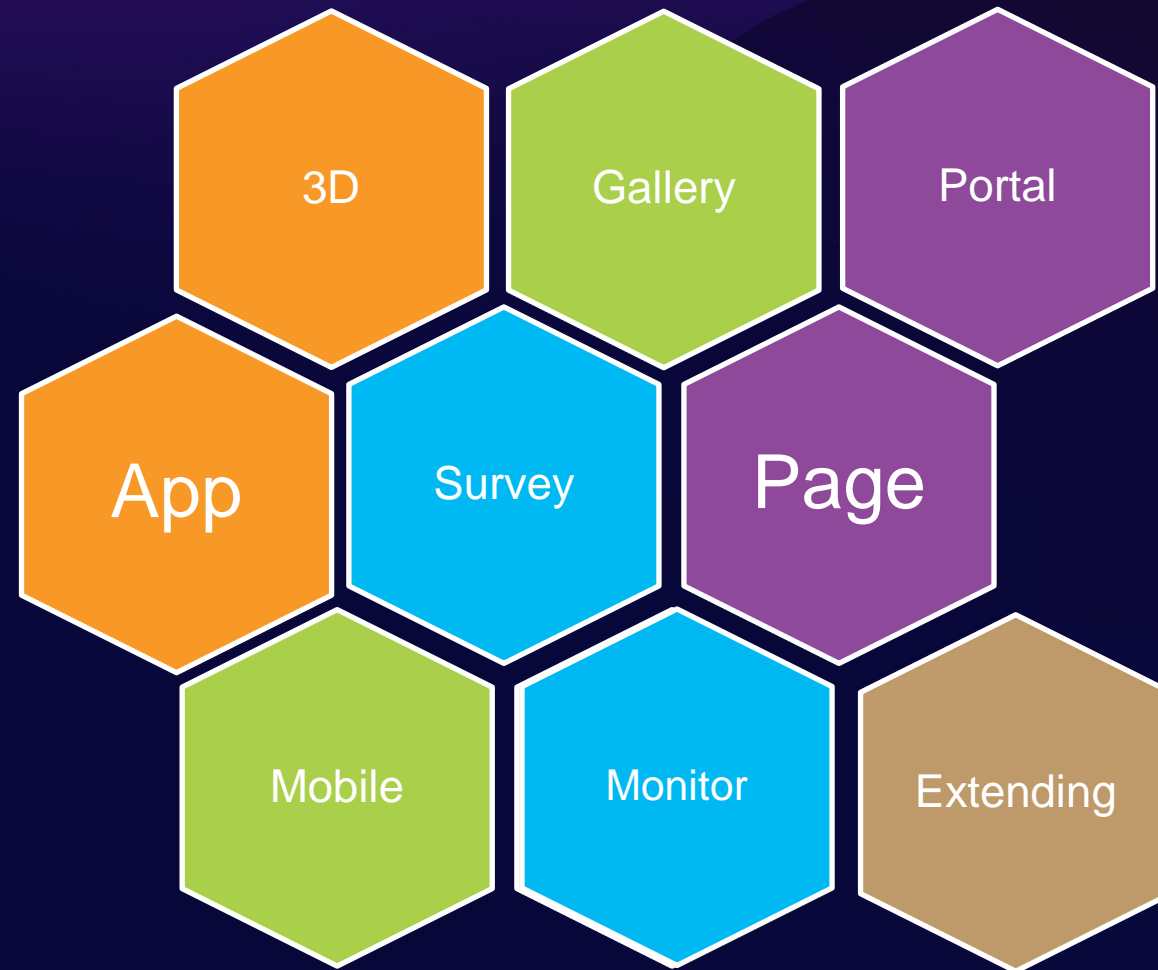
Apps



Portal

Survey

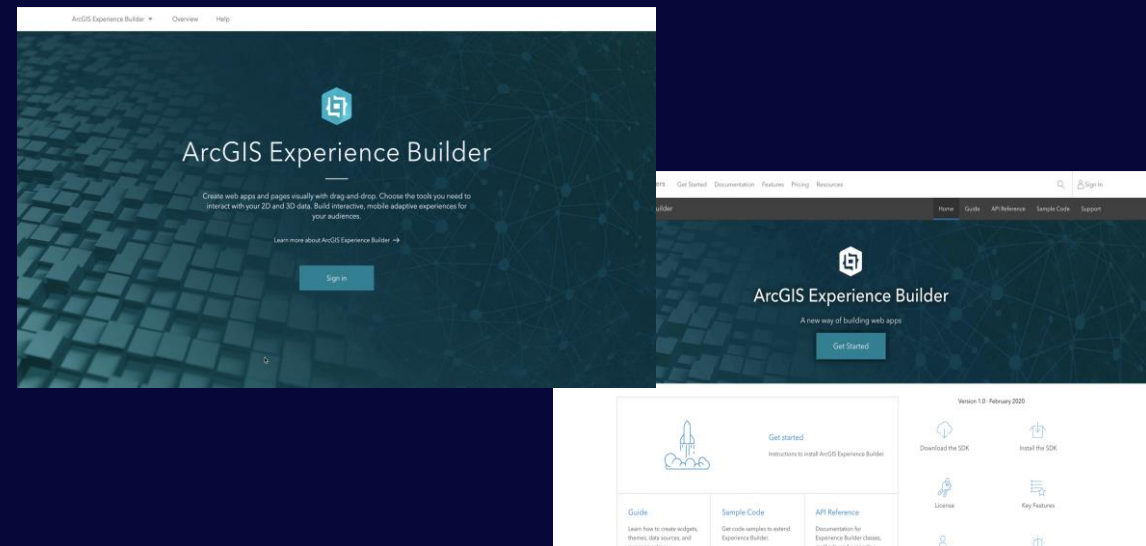




A Canvas for Creativity

ArcGIS Experience Builder Editions

- Online and Enterprise Editions
 - ArcGIS Online URL: <https://experience.arcgis.com/>
 - ArcGIS Enterprise 10.8.1 and up
- Developer Edition
 - Download and install locally



ArcGIS Experience Builder Licensing



- Essential Apps Bundle
 - Must have a Creator or GIS Professional user type to create experiences
- ArcGIS Developer subscription
 - For developers who are not part of an ArcGIS organization to use Developer Edition

An
experience

Design/
config

GUI builder



Template

1



Widget

2



Data source

3



Theme

4

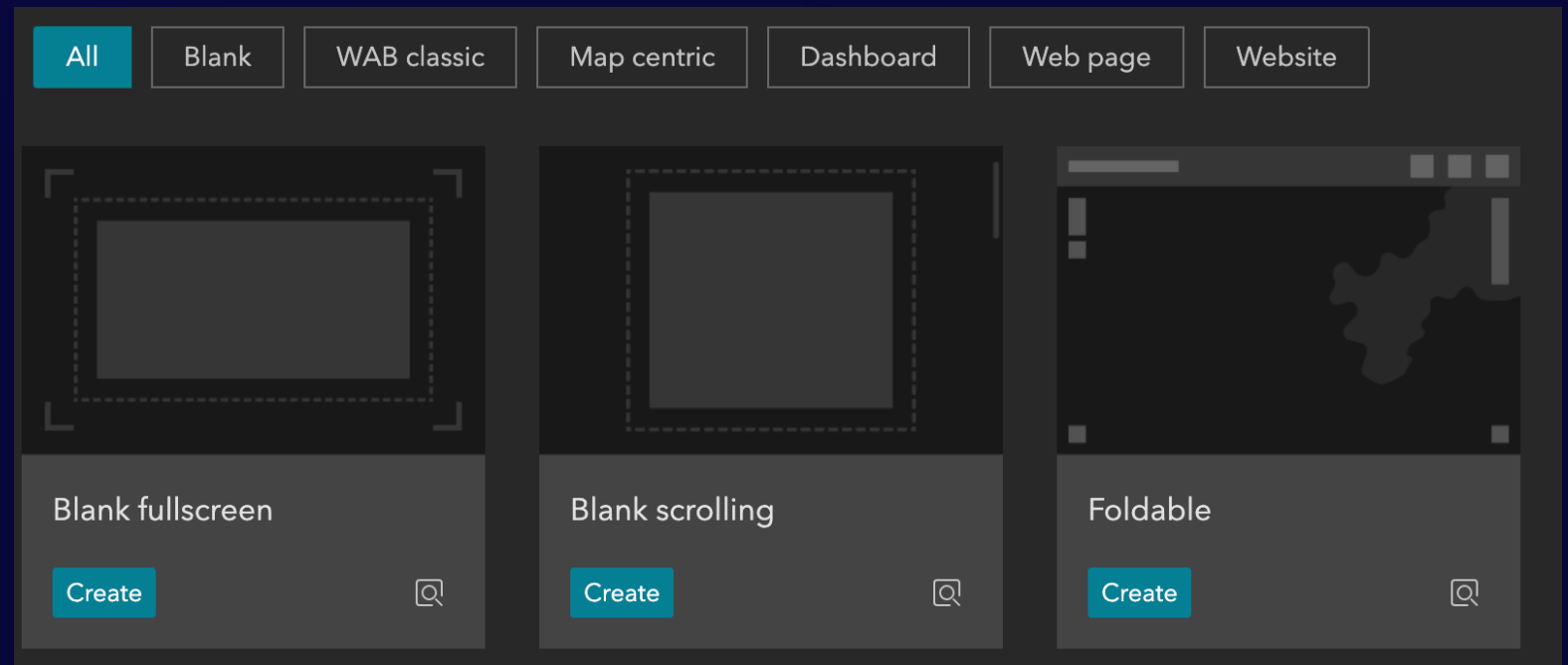


Extensibility

5

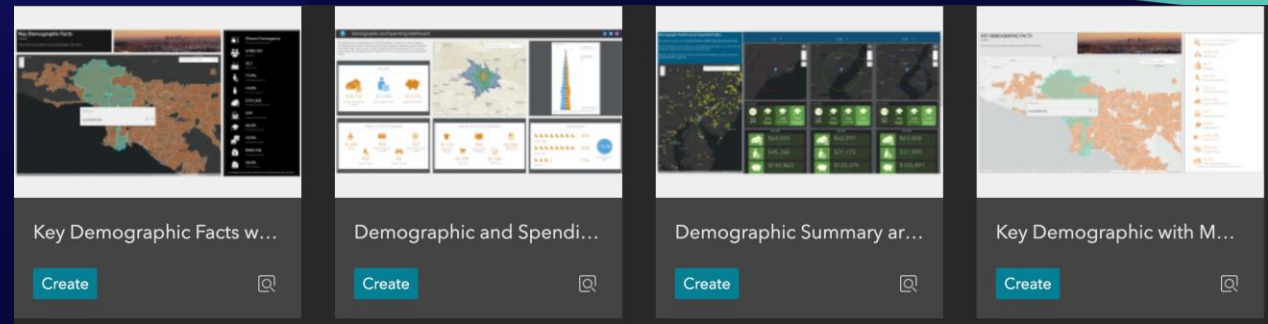
Default Templates

- Fullscreen
- Scrolling

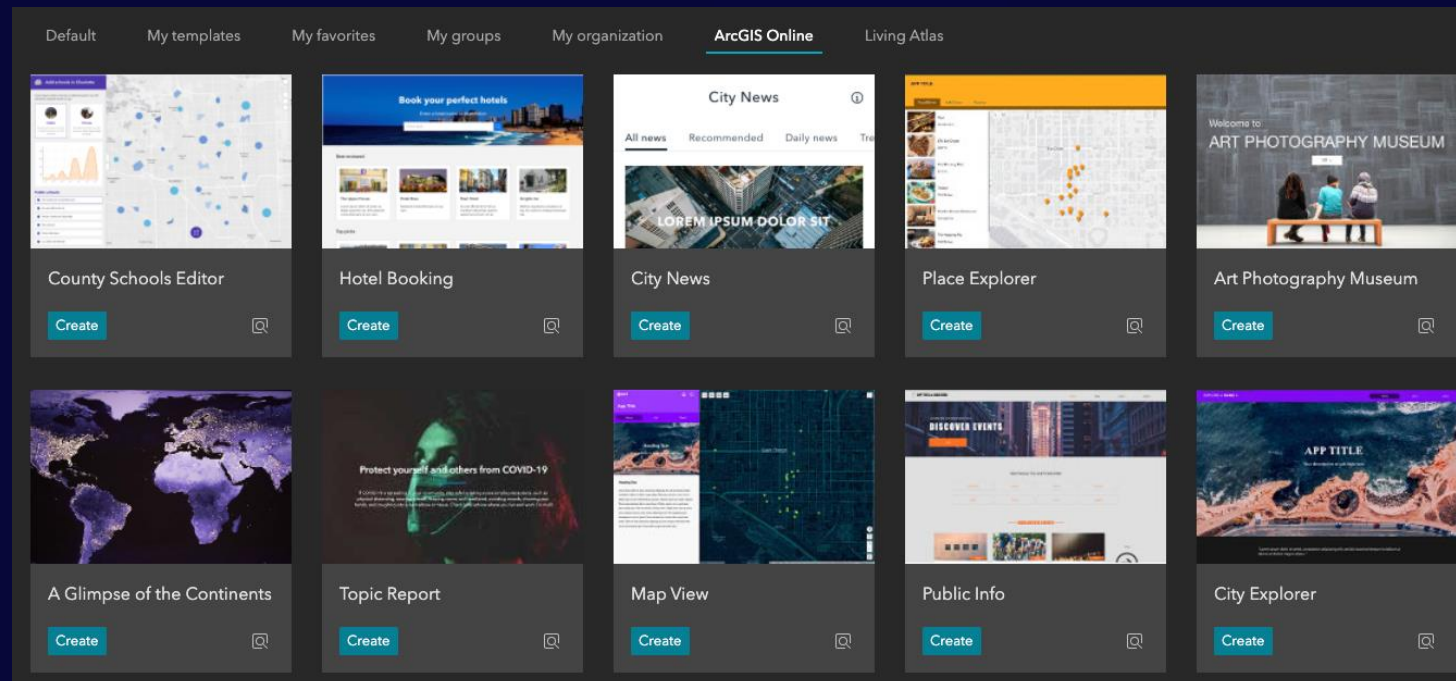


Public Templates

Available in ArcGIS Online



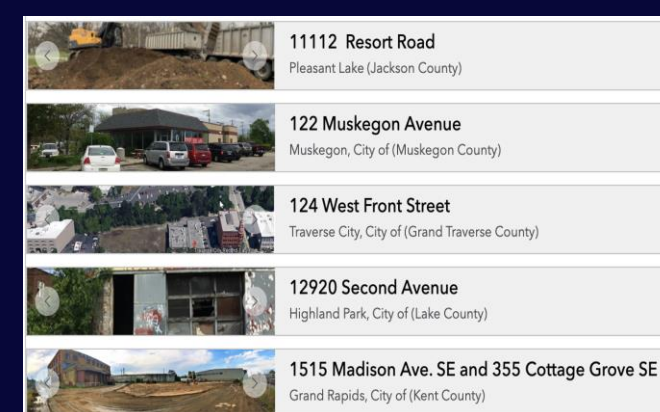
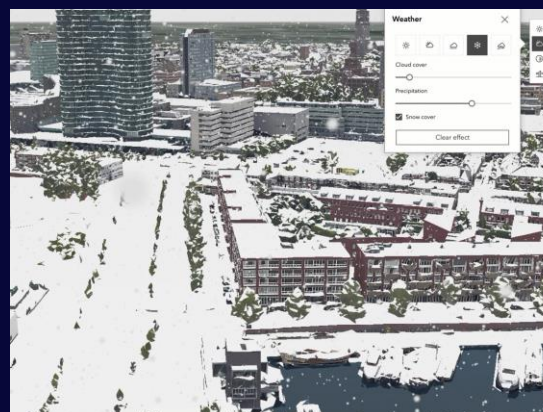
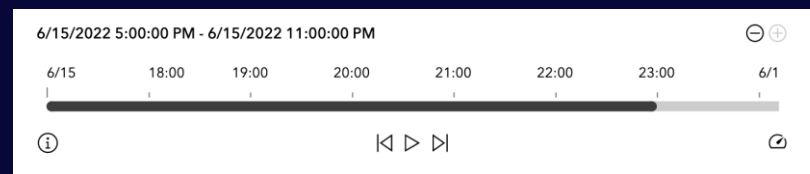
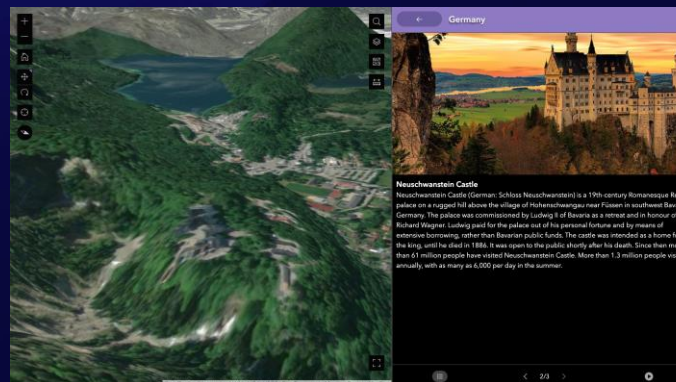
Business
Analyst
Templates



Showcase
New
Features

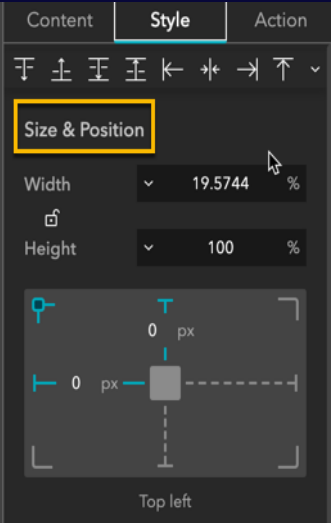
Types of Widgets

- Map centric
- Data centric
- Page elements
- Menu and toolbars
- Layout
- Section

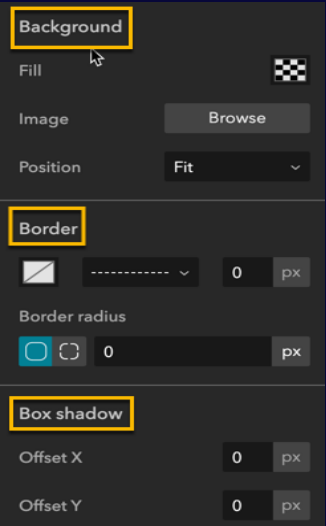


Widget Style

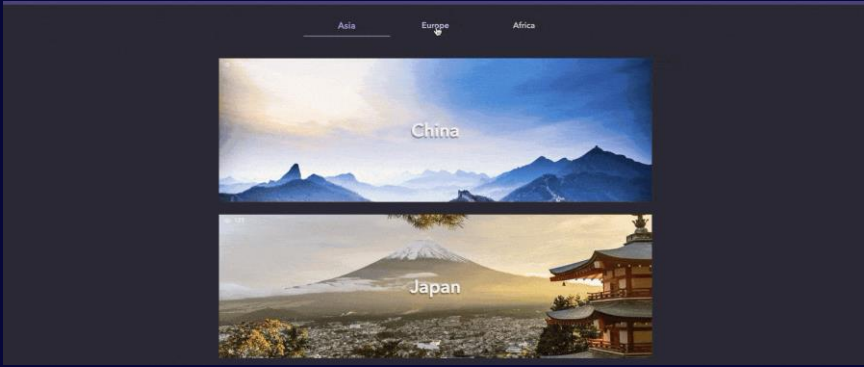
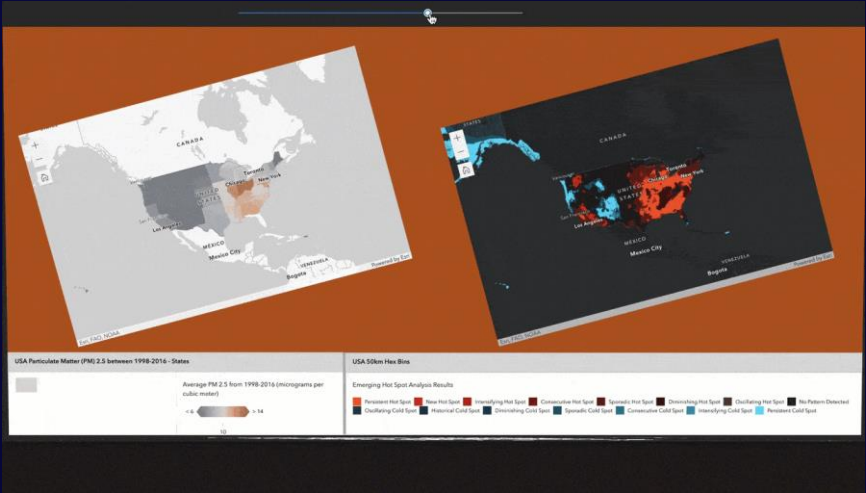
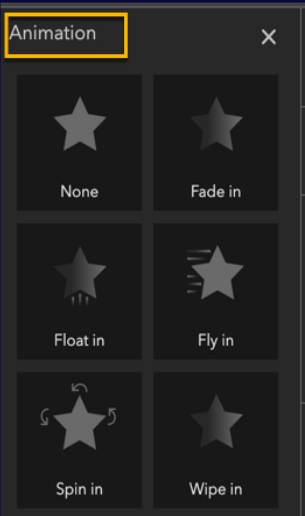
Size & Position



Background, Border & Box shadow

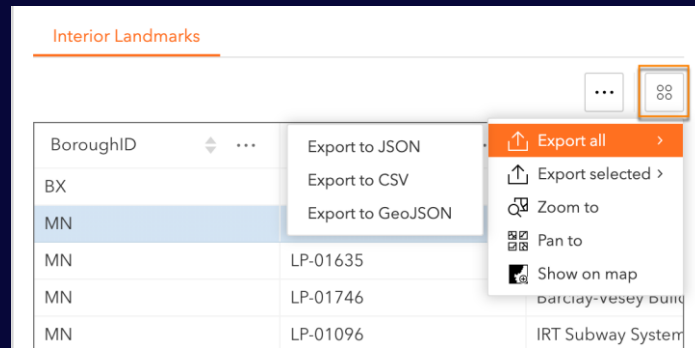


Animation

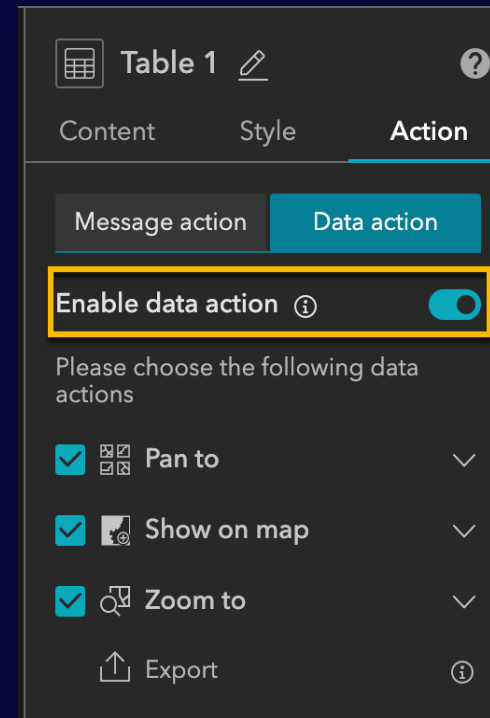


Widget Action

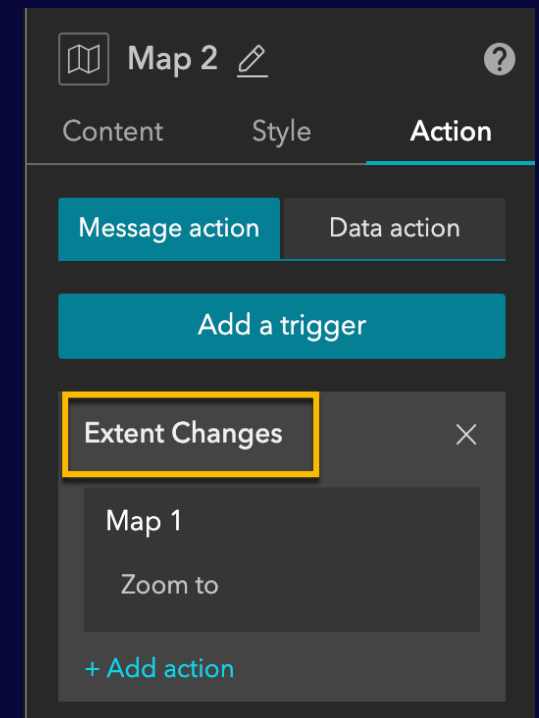
- Widgets talk with each other
- Data action allows end users to click on
- Message action applies automatically at runtime



Data action



Message action



Message Action

- A trigger (source) broadcasts a message
- Targets listen to the message
- Targets take actions

Trigger	Target	Action
Extent Changes from Map 1	Map 2	Zoom to the same extent as Map 1
	Framework (data)	Filter Data Records For example, List 1 displays only features within the current map extent

Layout Widgets

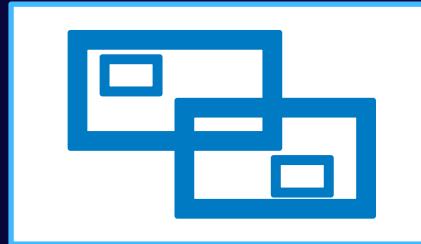
Row



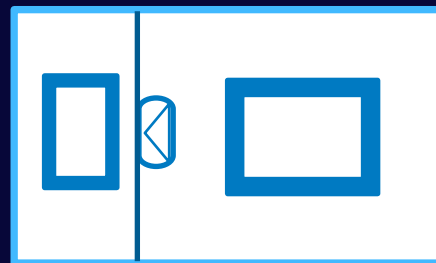
Column



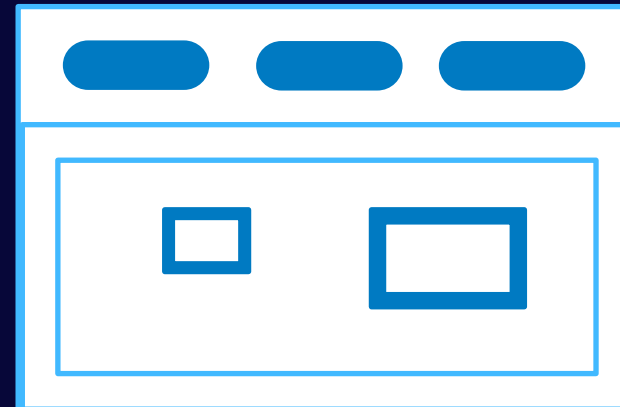
Fixed Panel



Sidebar

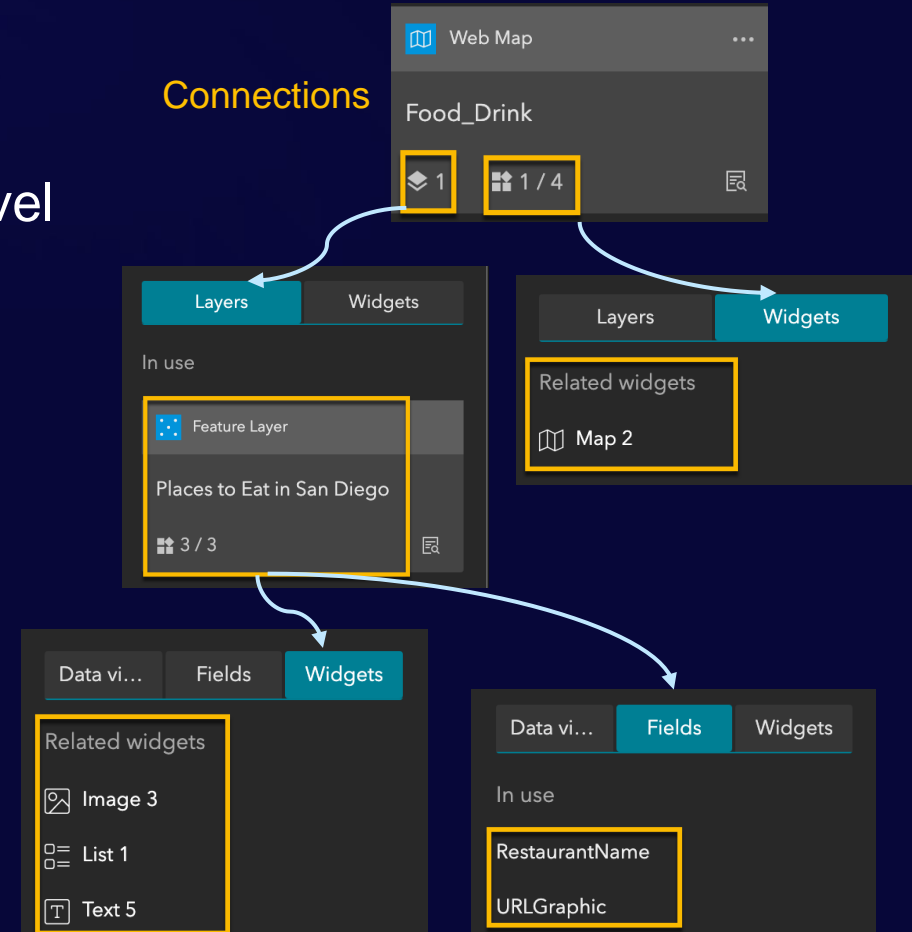


Section & View Navigation



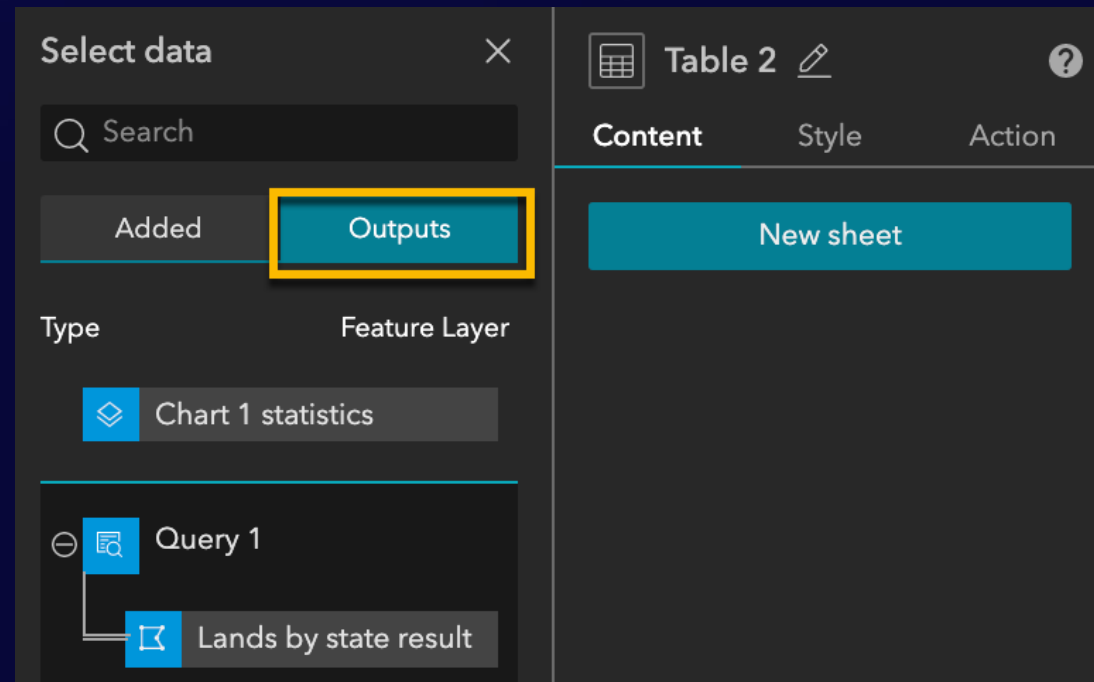
Data Source

- Manage and share data at the app (framework) Level
- Show connections between
 - layers
 - fields
 - widgets



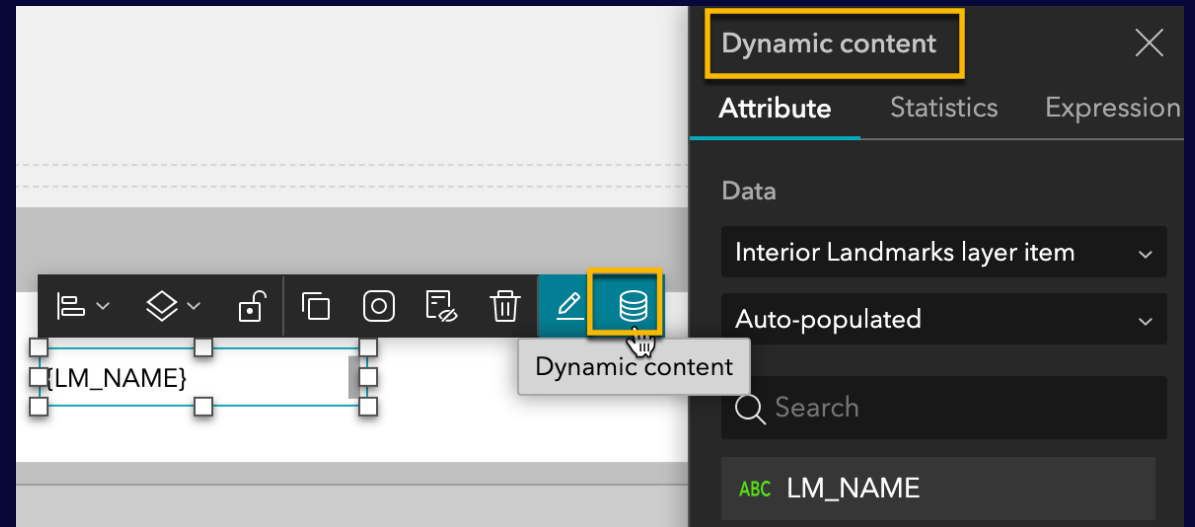
Output Data Source

- Generated by widgets at runtime
 - Chart, Query, Directions
- Can be other widget's data source
 - Table, Text



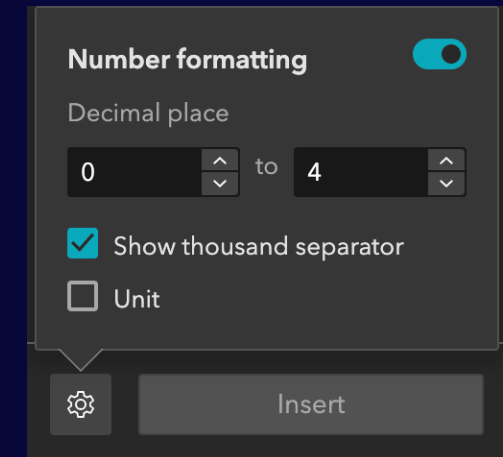
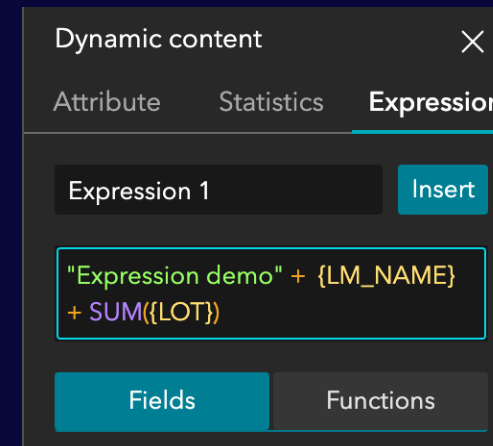
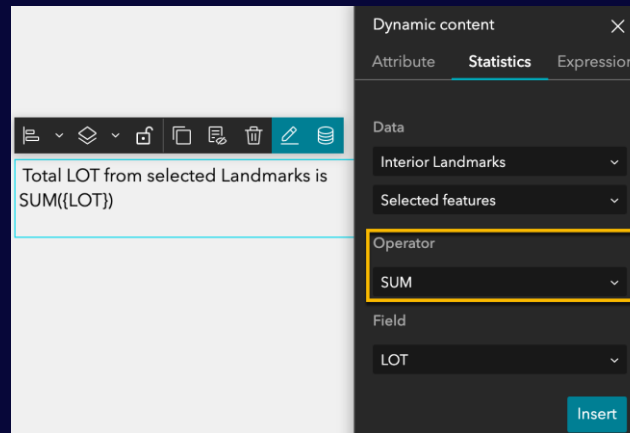
Dynamic Content

- Dynamically display attribute values, statistics or expressions
 - Apply to Image, Text, Button, List, Card, and Embed
 - Connect to data
 - Choose a view from data source

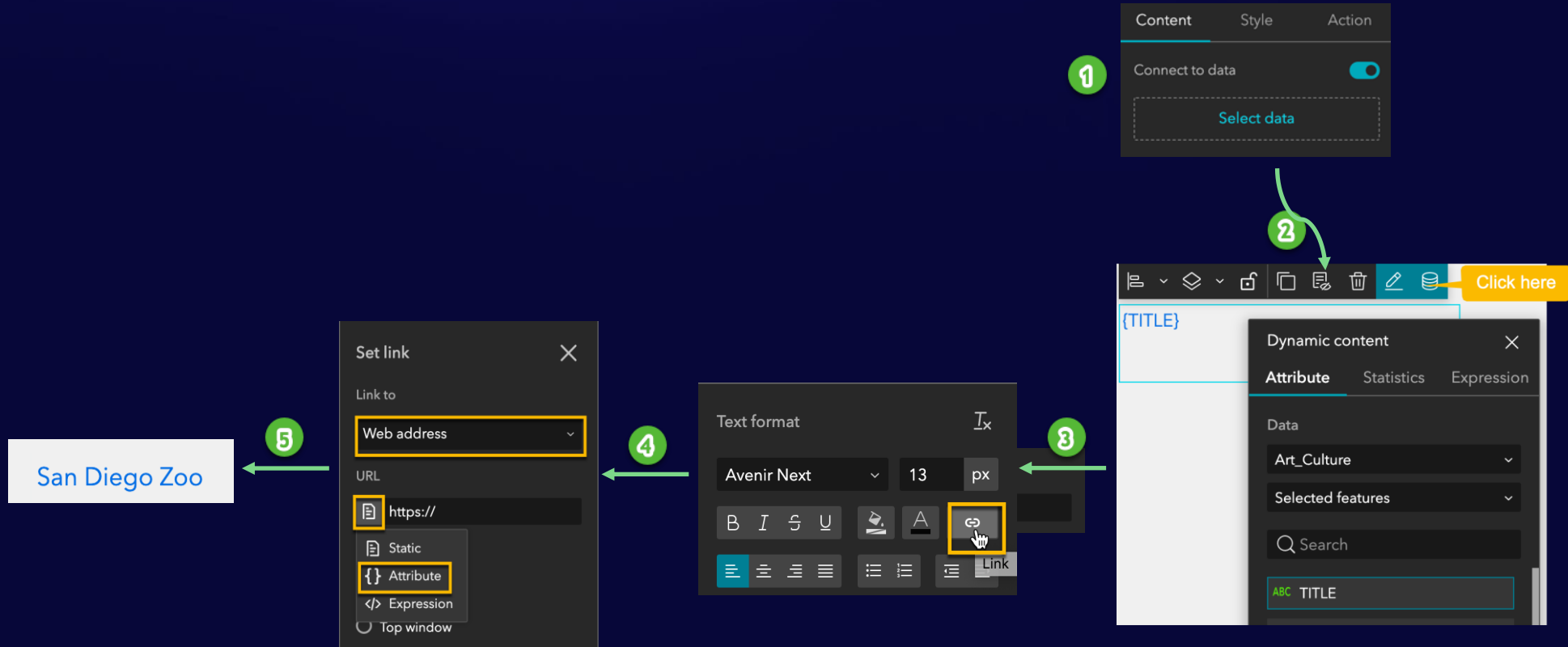


Dynamic Expression

- Get the statistic result of a numeric field
- Use the expression editor to input text, numbers, fields, and functions
- Format numbers

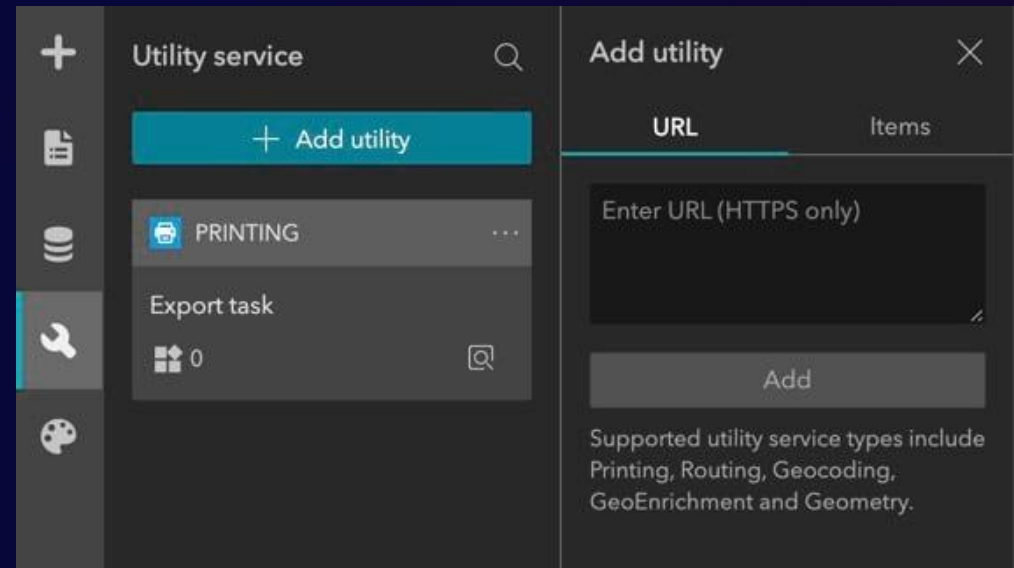


Dynamic Linked Text



Manage Utility Service

- Manage utility services at the app level
- Shared and used by widgets



Theme

- Define a set of color and font
- Customized options
 - Color
 - Font style
 - Font size

Default

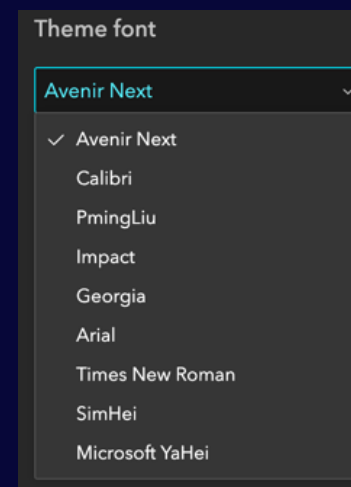
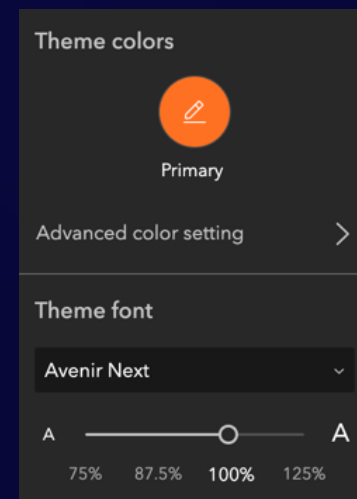
Dark

Vivid

Ink

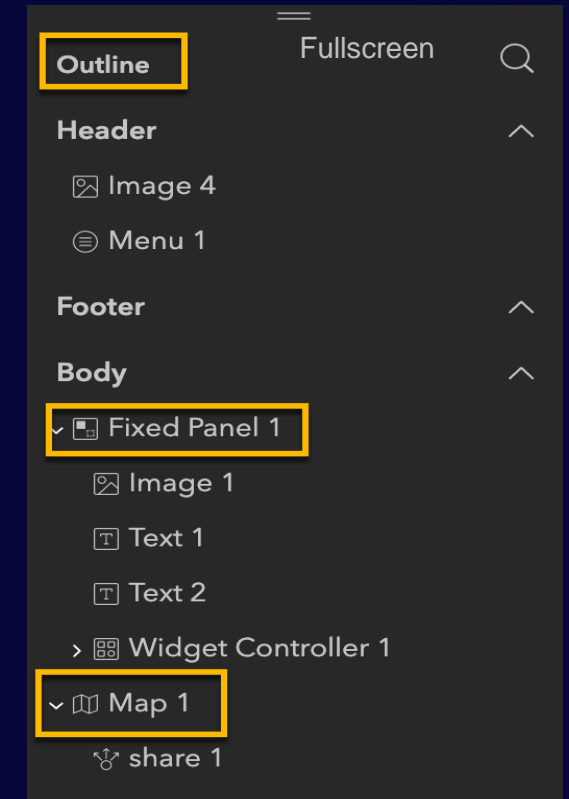
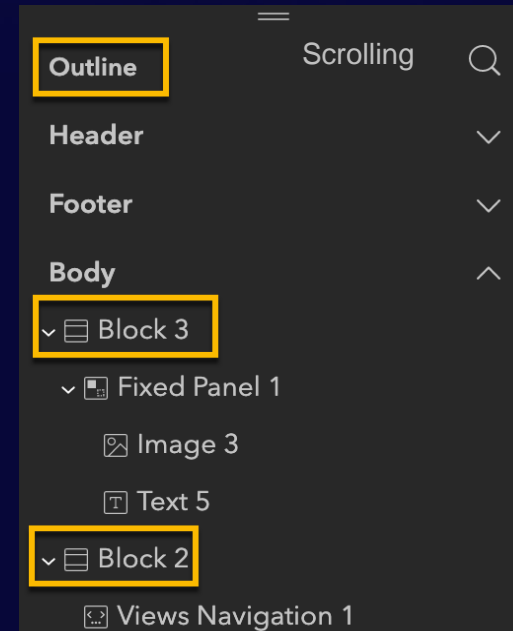
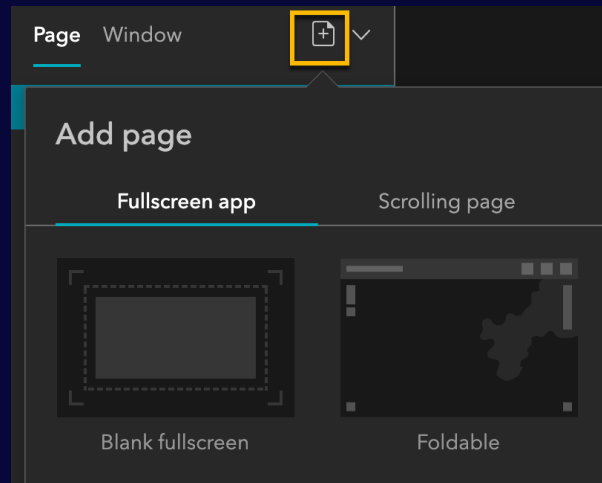
Mysterious

Shared



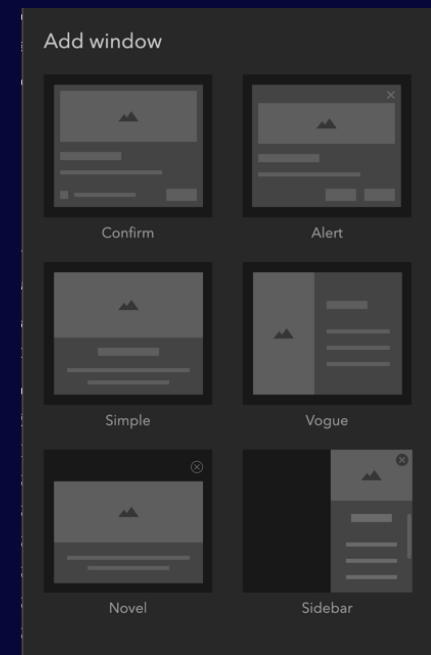
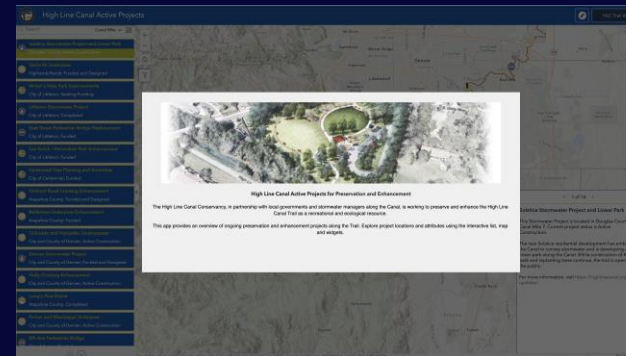
Page

- Header, Footer, Open with window
- **Outline** helps navigate widgets on the page
- Page templates



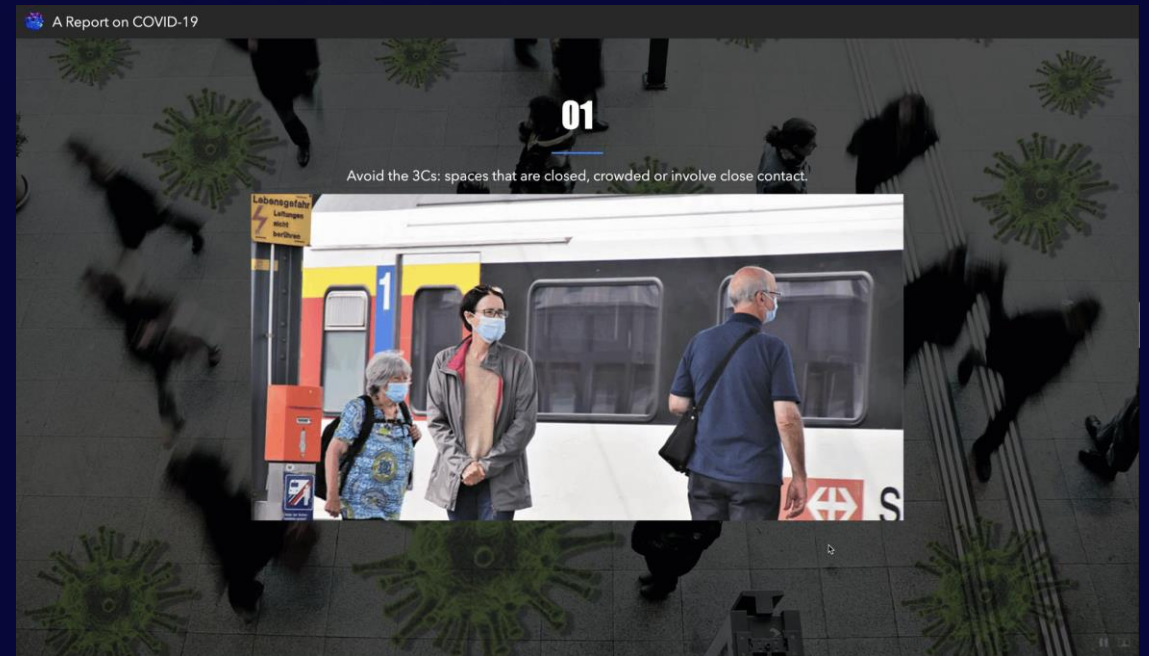
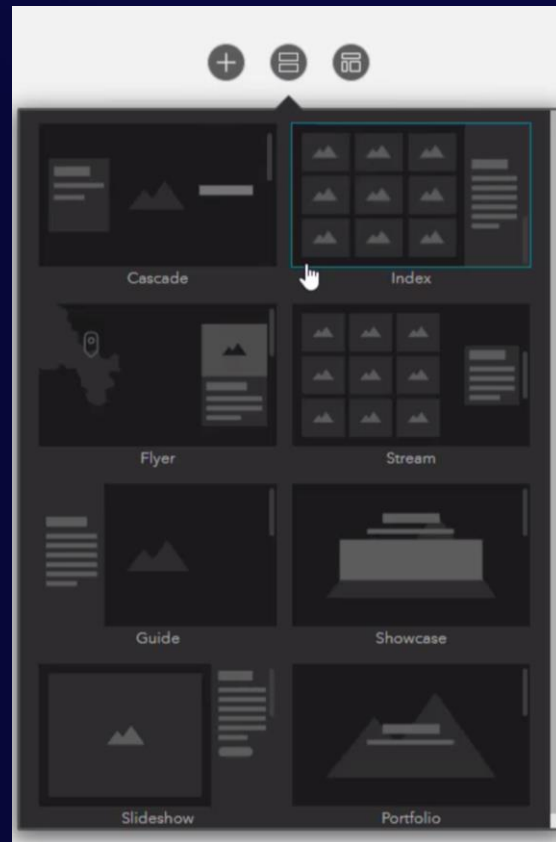
Window

- Display Splash screens or information
- Fixed mode - shown in a fixed position like a splash screen
- Anchored mode - shown around the widget that triggers it
- Window templates



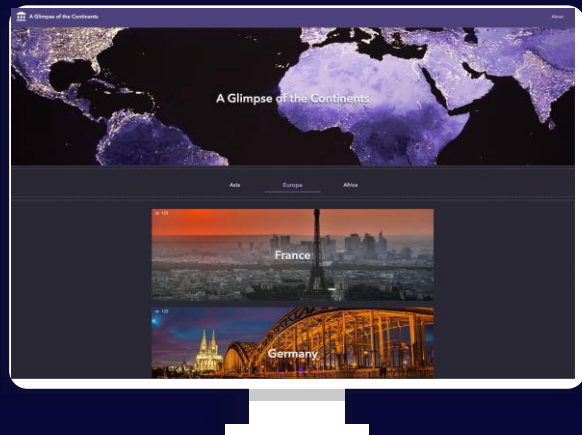
Screen Group

Engaging
Experience



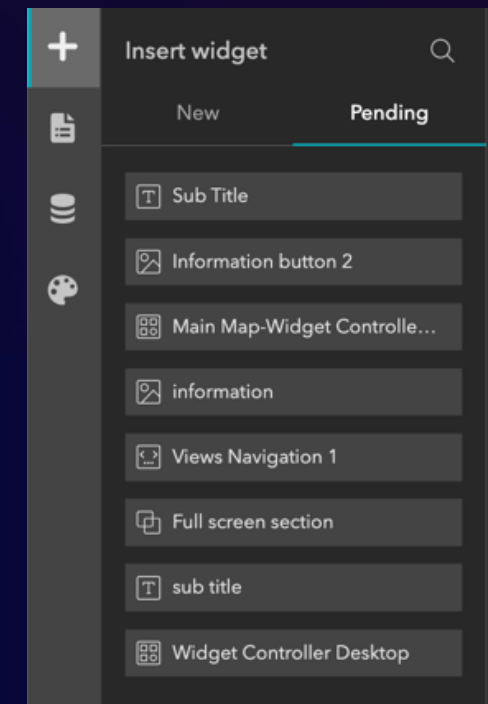
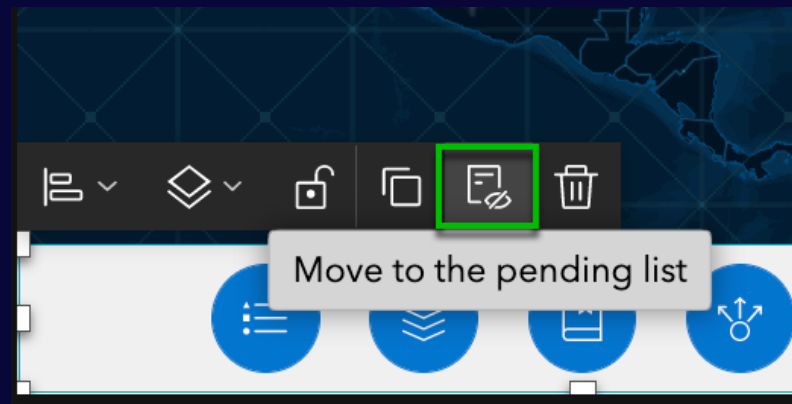
Mobile Optimization

- Provides screen sizes for Mobile, Tablet, and Desktop
- Configure the app differently on devices with one URL



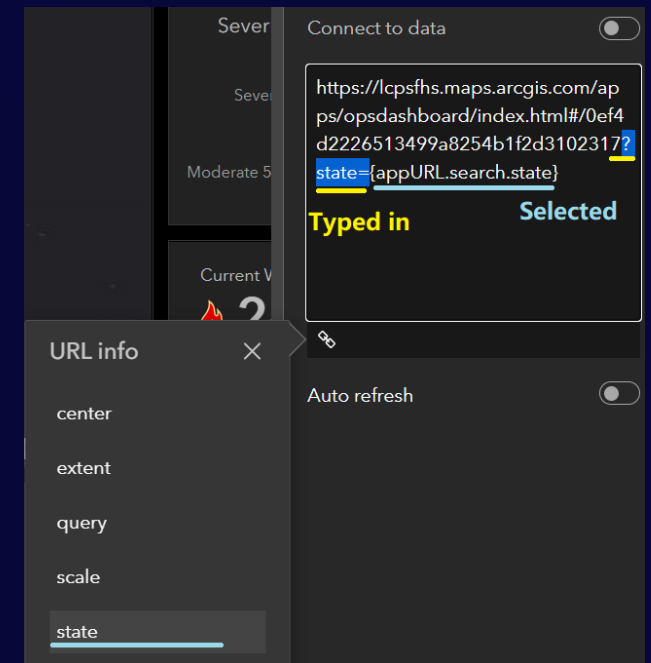
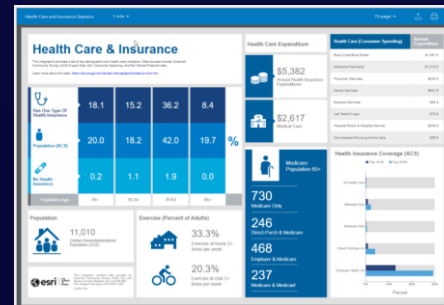
Widget Pending List

- A place to store widgets available on other screen sizes
- Move widgets to the pending list if you want to
 - Change widget's content
 - Use less widgets
 - Use different different



Integration With ArcGIS Apps

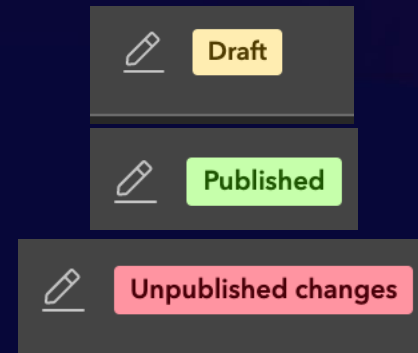
- Survey widget for Survey123
 - Pass field values from Map to Survey
 - Submit, Edit, View forms
- Business Analyst Infographic
- Floor Filter for Indoors
- Embed Dashboards, Storymaps, Web AppBuilder
 - Pass URL parameters



Publish Apps

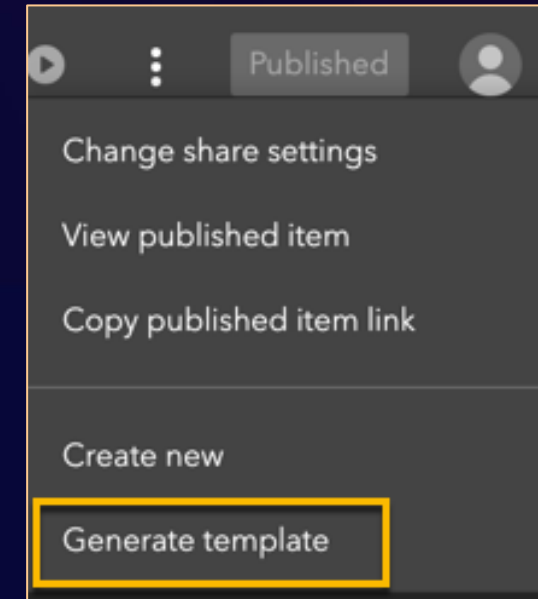
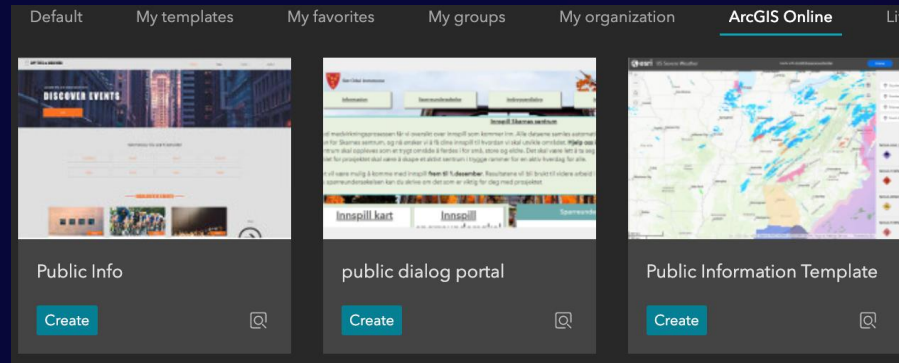


Draft
Published
Unpublished changes



Generate templates

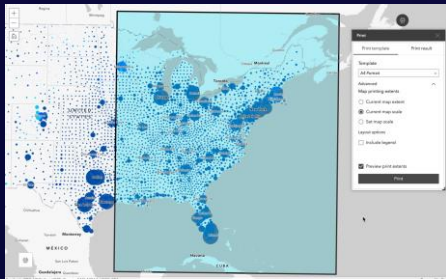
- Create your own starters for reuse and branding
- Shared with others



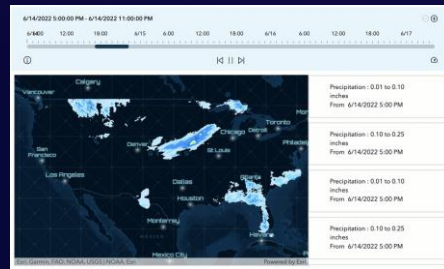


What's New & Coming

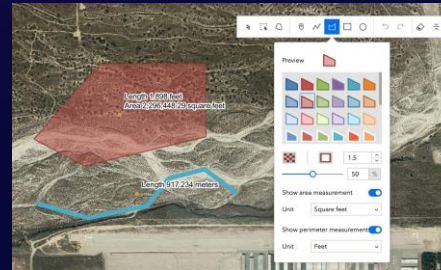
New Widgets In 2022



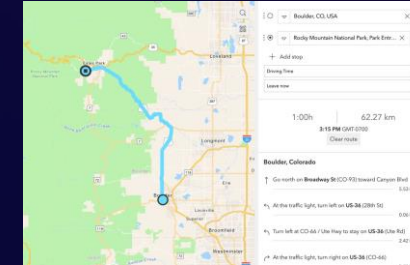
Print



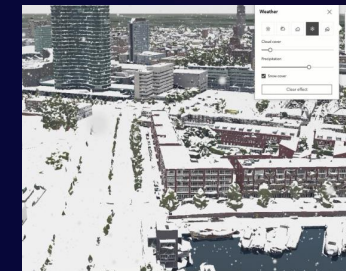
Timeline



Draw



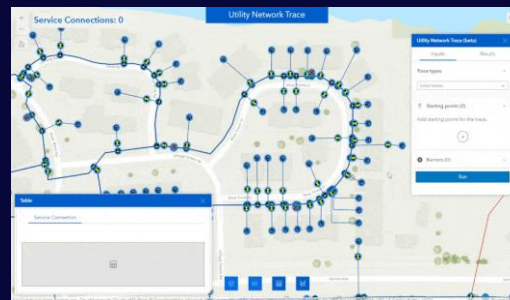
Directions



3D
Toolbox



Floor Filter



Utility Network Trace (beta)



Business Analyst Infographic (beta)

Road Map

Near Term

- Add custom widgets in ArcGIS Enterprise 11 & up
- Coordinates widget

Mid Term

- Basemap Gallery widget
- Swipe widget
- Emergency Response Guide widget
- Threat Analysis widget
- Public Notification widget
- Add Data widget
- Accessibility

Long Term

- Geoprocessing widget
- Analysis widget
- Situation Awareness widget
- Image Measurement widget
- Oblique Viewer widget

Helpful Resources



- [Experience Builder Developer Edition](#)
- [Experience Builder Online Edition](#)
- [Gallery](#)
- [Product page](#)
- [Community](#)
- [Blog](#)

- [Learn lessons](#)
- [YouTube Playlist \(full video\)](#)
- [YouTube Playlist \(short video\)](#)
- [YouTube Release Playlist](#)



esri[®]

THE
SCIENCE
OF
WHERE[®]