

Exploring Oregon's High Desert

The Making of a Trail



OREGON
NATURAL
DESERT
ASSOCIATION

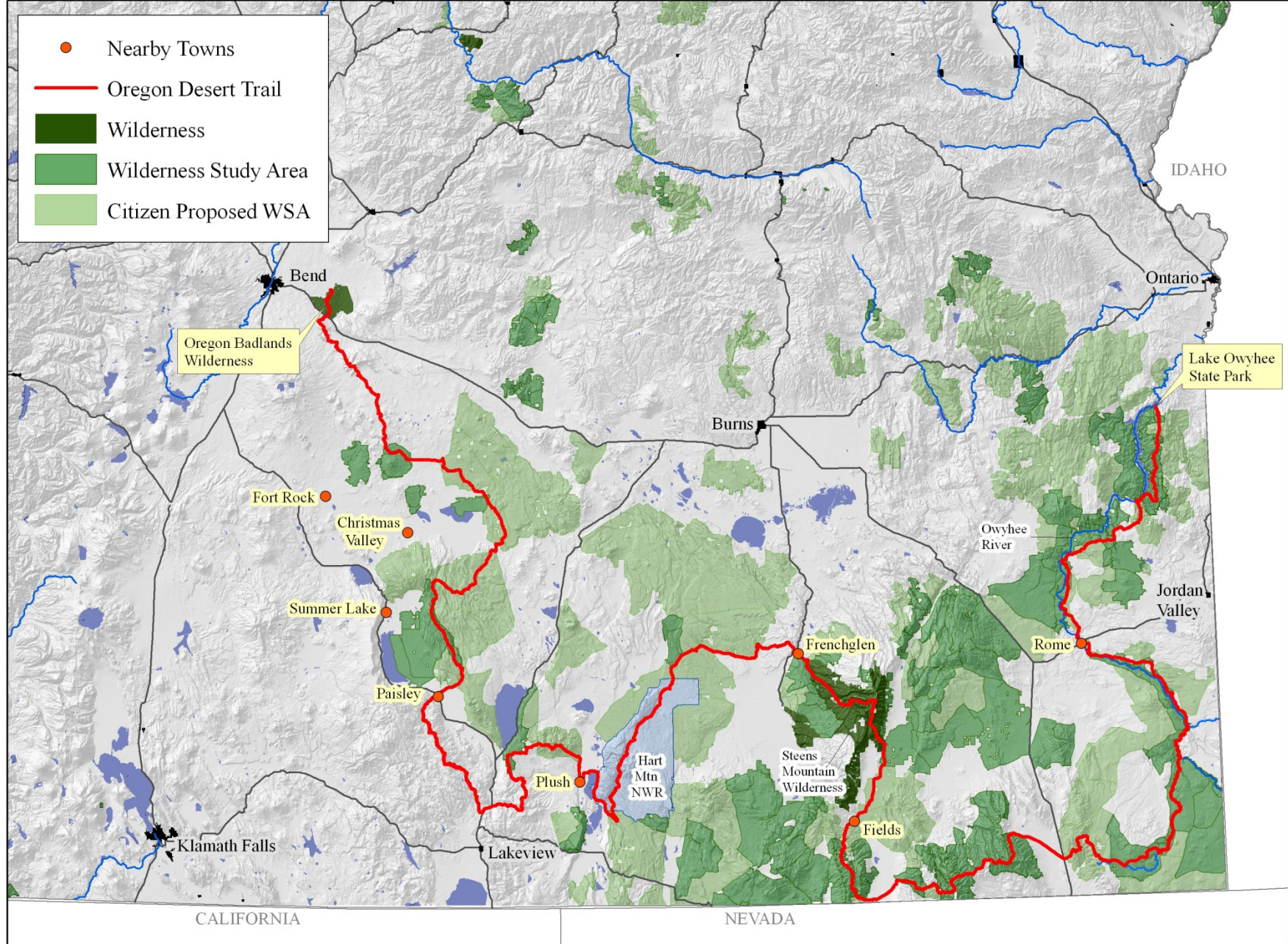


OREGON DESERT TRAIL



WWW.ONDA.ORG

OREGON DESERT TRAIL



Oregon Badlands Wilderness



Photo by Greg Burke

Diablo Mountain Wilderness Study Area



Photo by Sage Clegg

Abert Rim Wilderness Study Area



Photo by Tyson Fisher

Hart Mountain – Warner Valley



Steens Mountain Wilderness



Owyhee – Twin Springs Gate



Photo by Jim Davis

Owyhee - Honeycombs

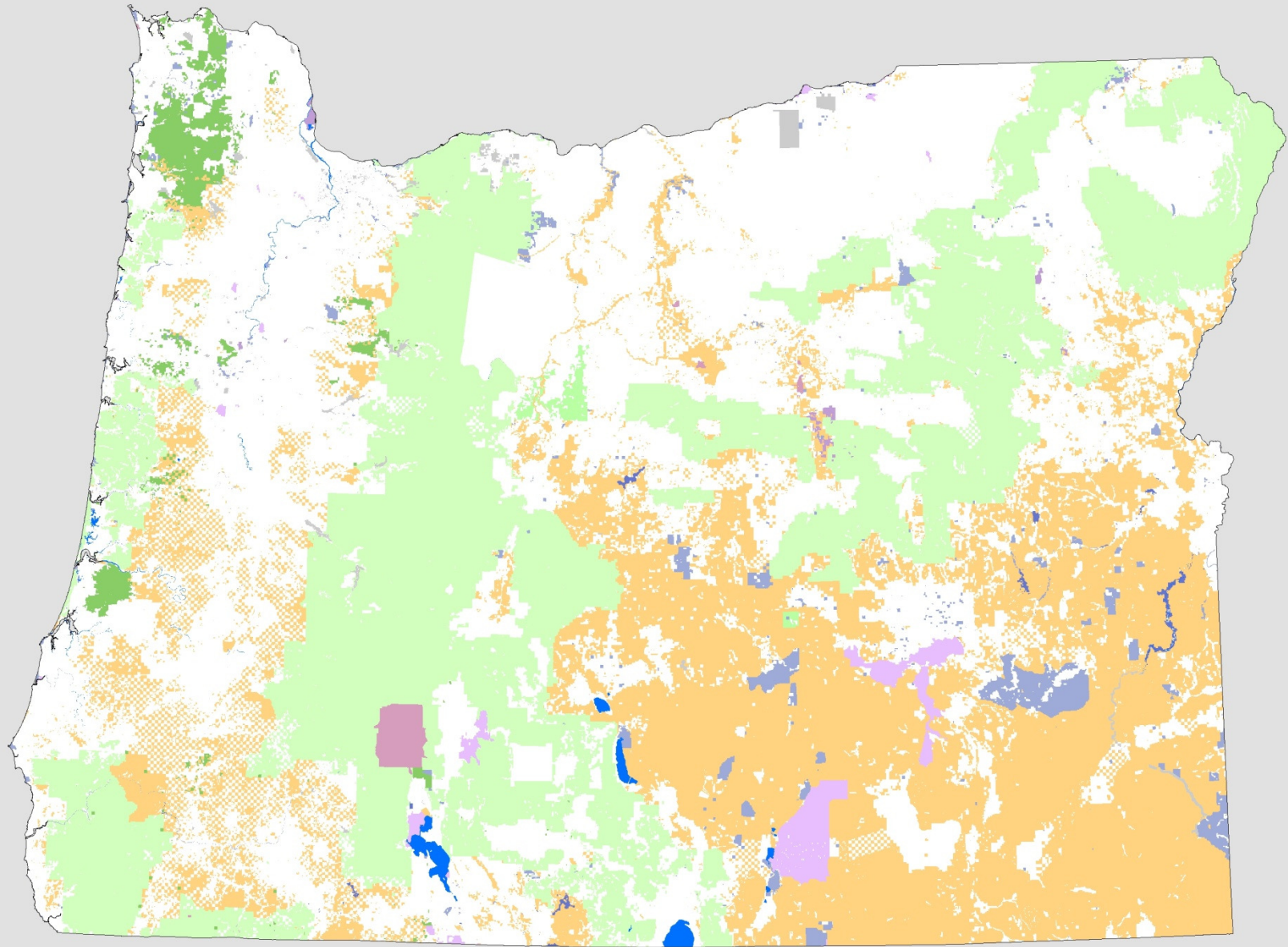


Photo by David Kessler

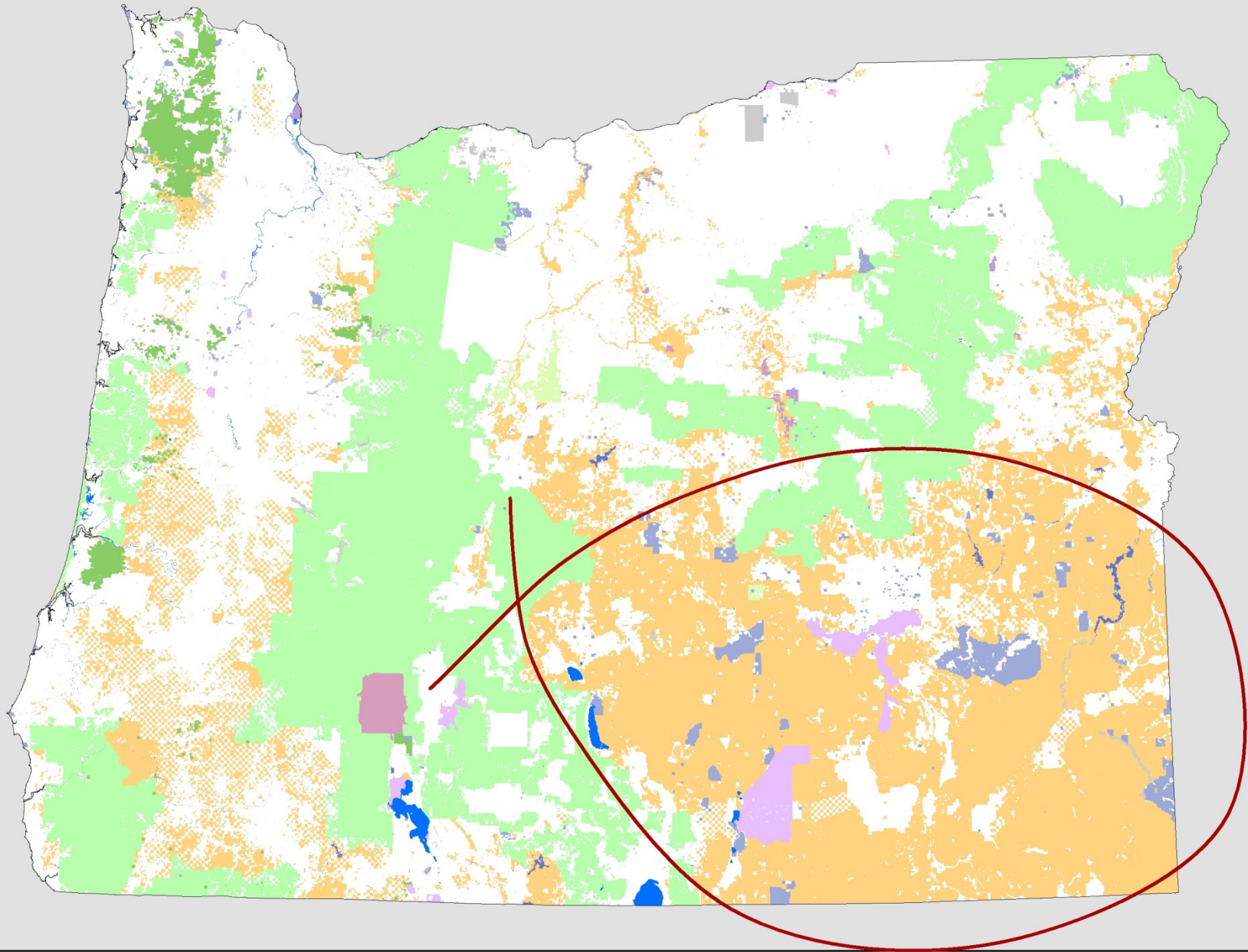
Mapping the Oregon Desert Trail

- Purpose – To increase awareness and appreciation for Oregon's desert lands
- Character of the trail – non-motorized and unimproved: dirt roads, two-tracks, hiking trails, cross-country
- Uses – hiking, horse-back riding, mountain biking

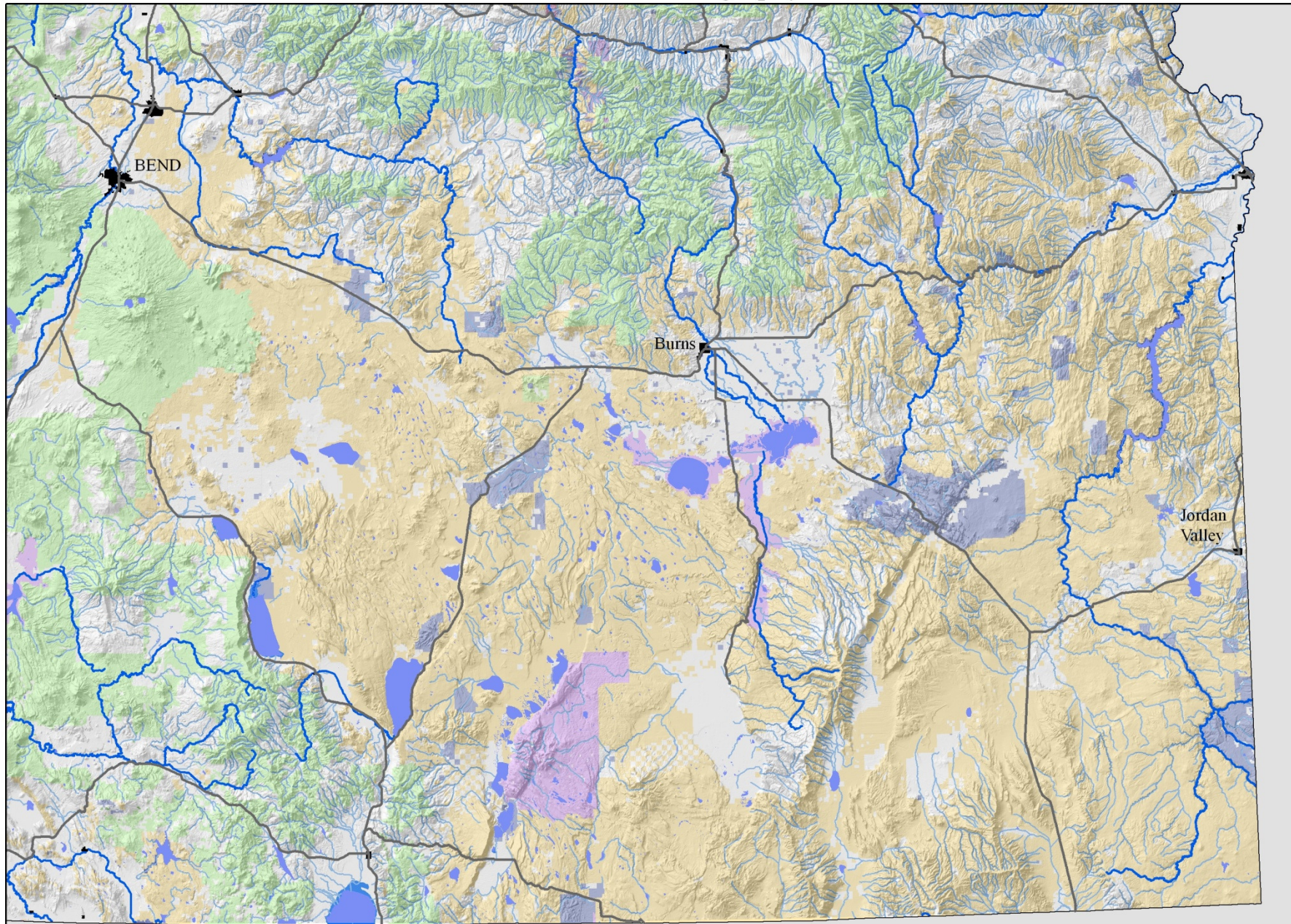
Public Lands in Oregon



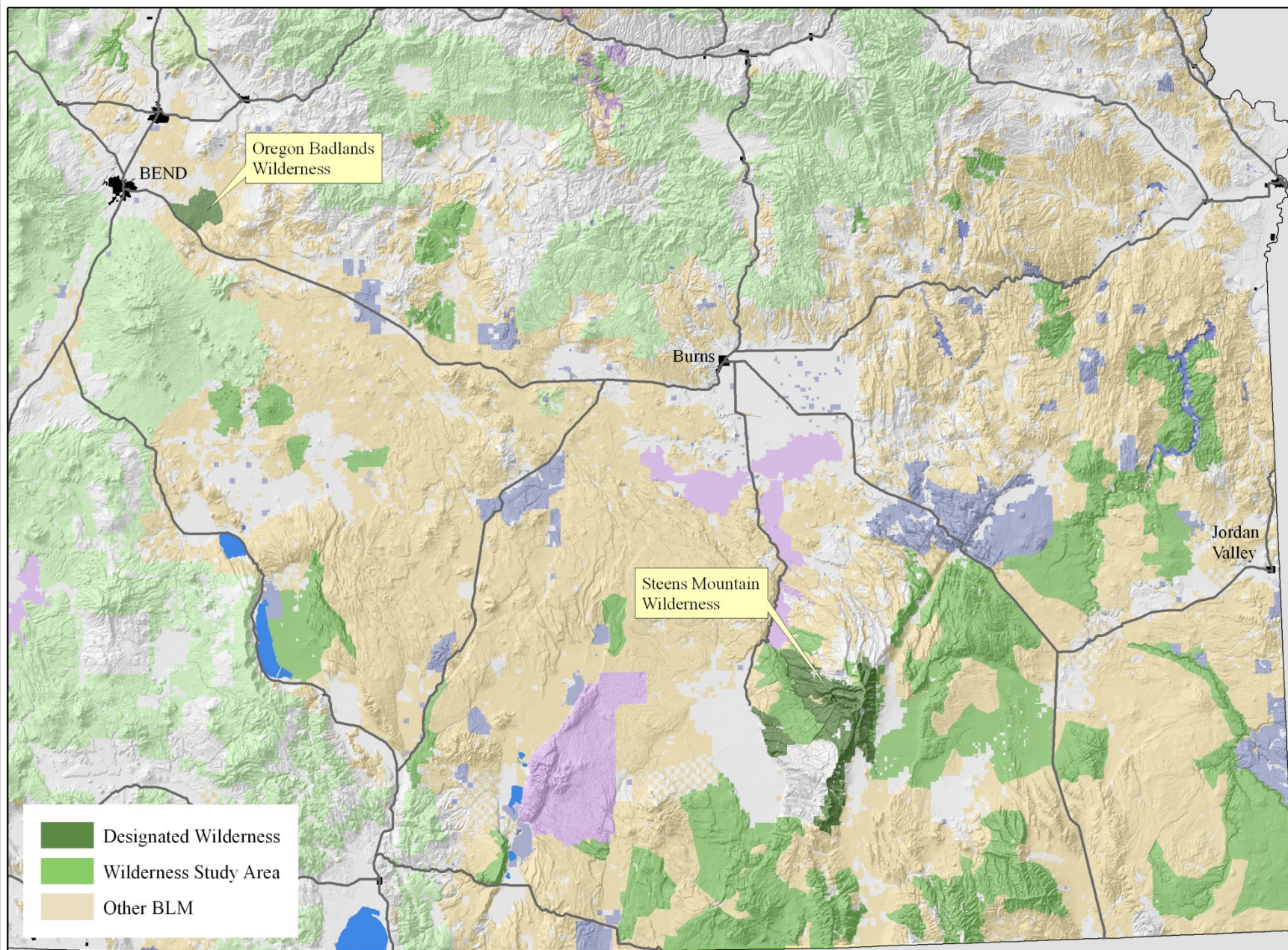
Public Lands in SE Oregon



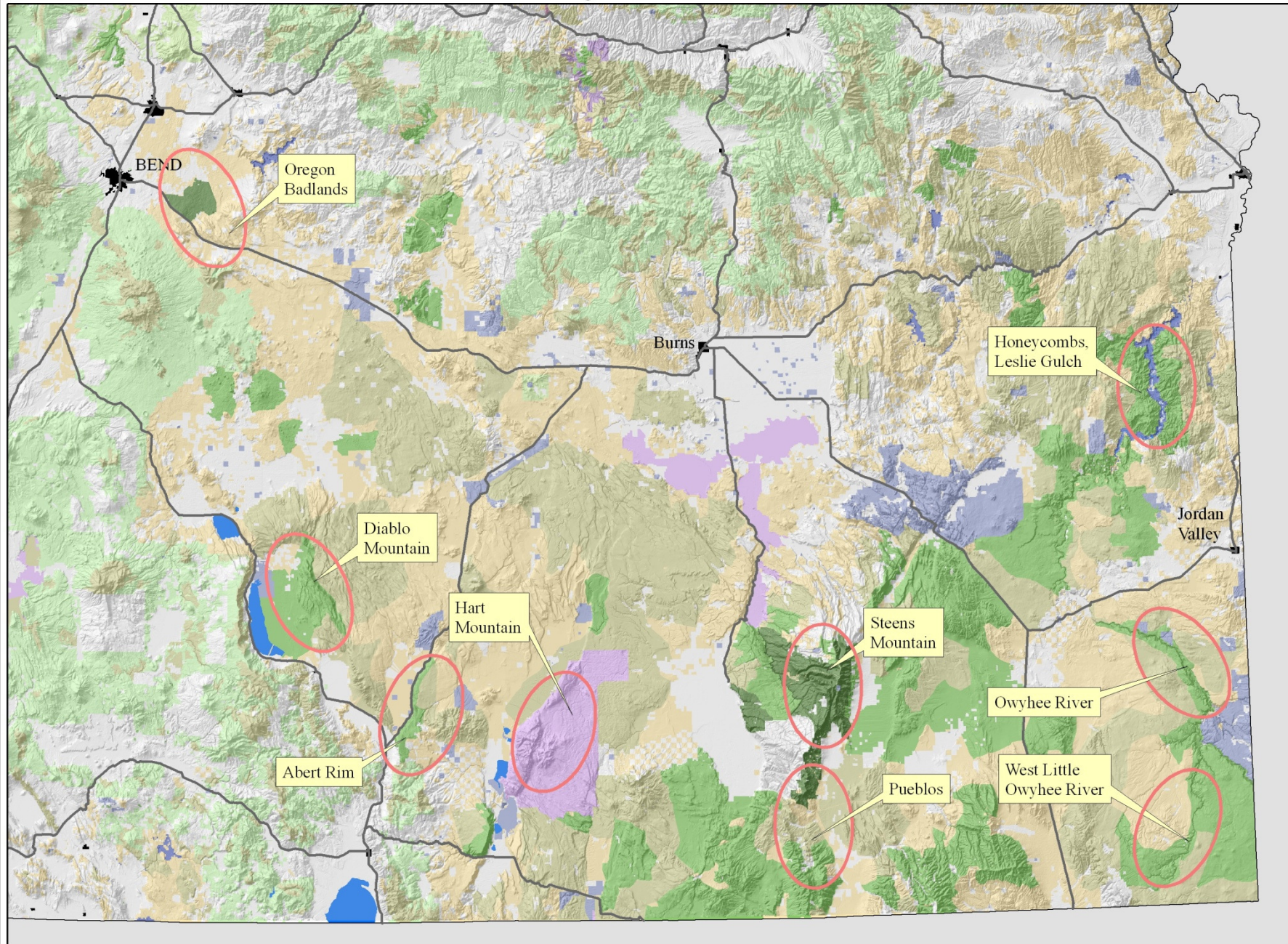
Public Lands and Geography



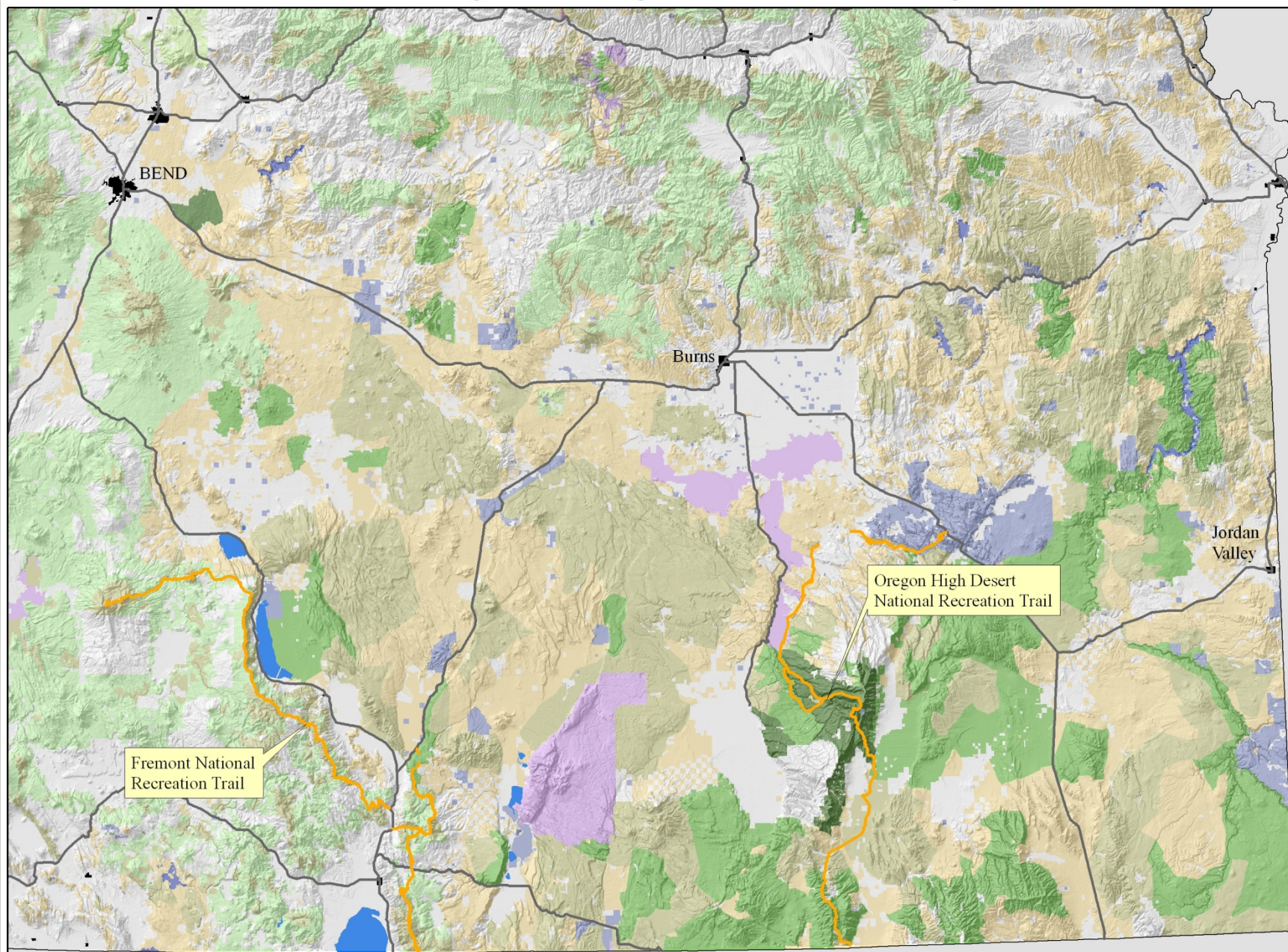
Public Lands and Wilderness



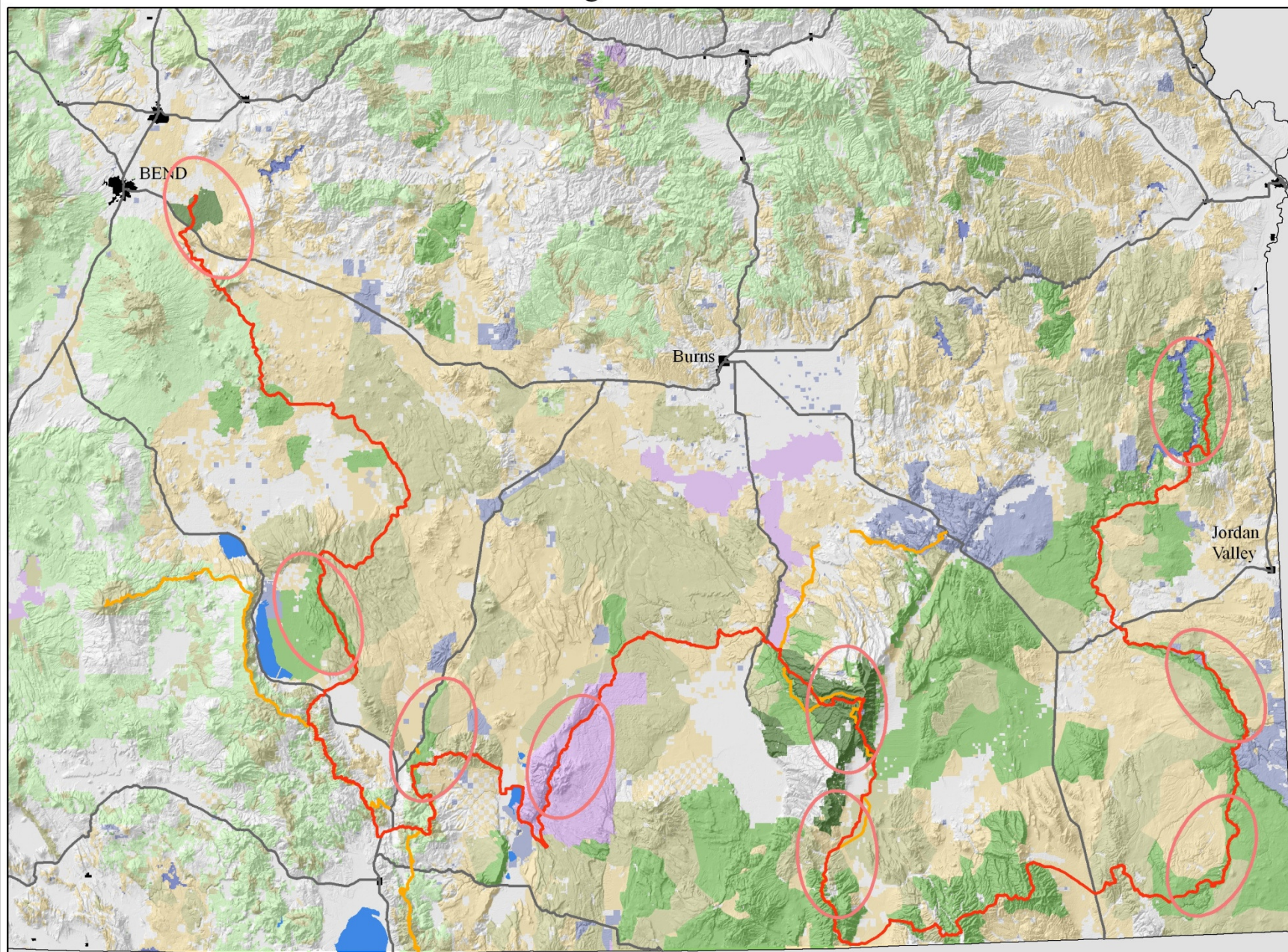
Target Areas



Other Designated Hiking Trails in Southeast Oregon



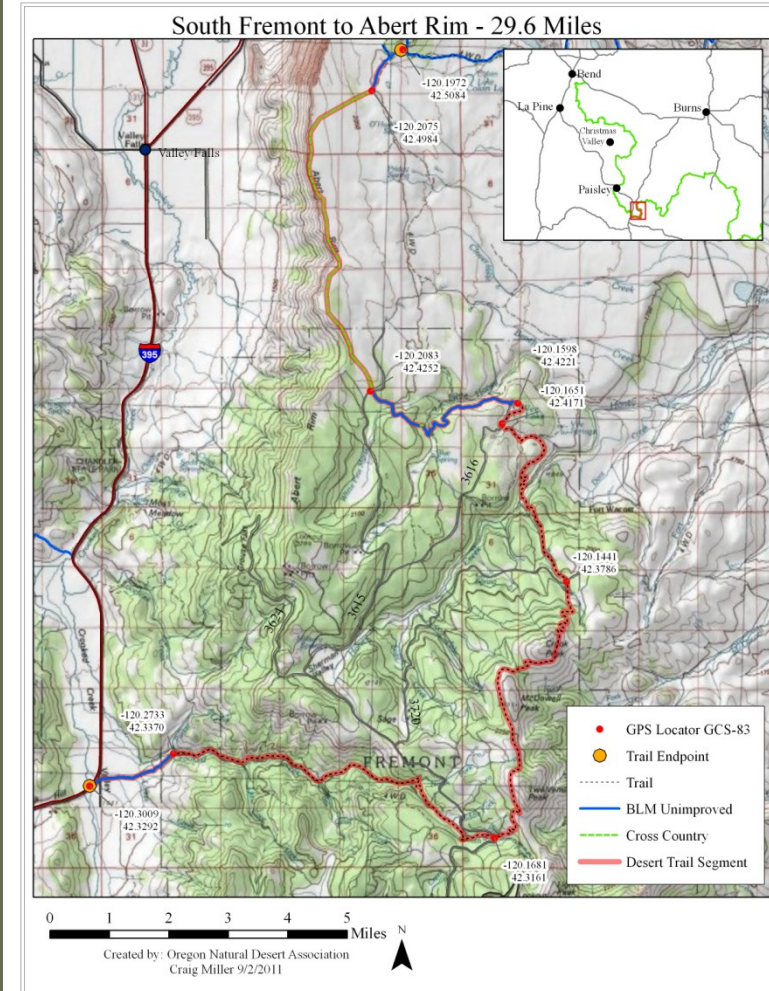
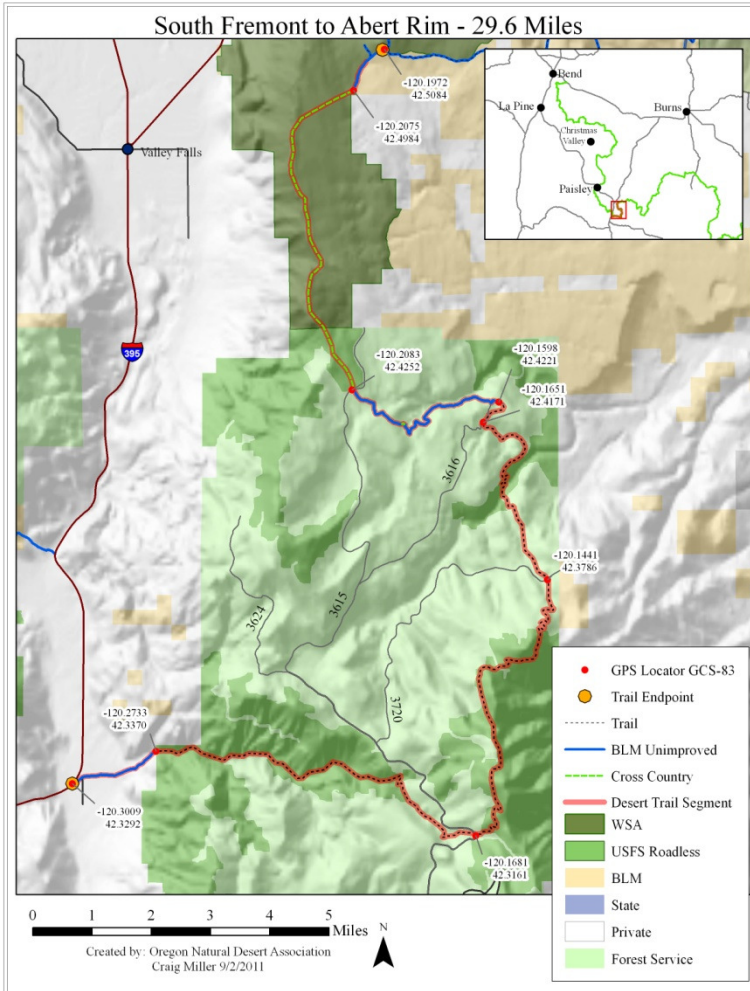
Oregon Desert Trail



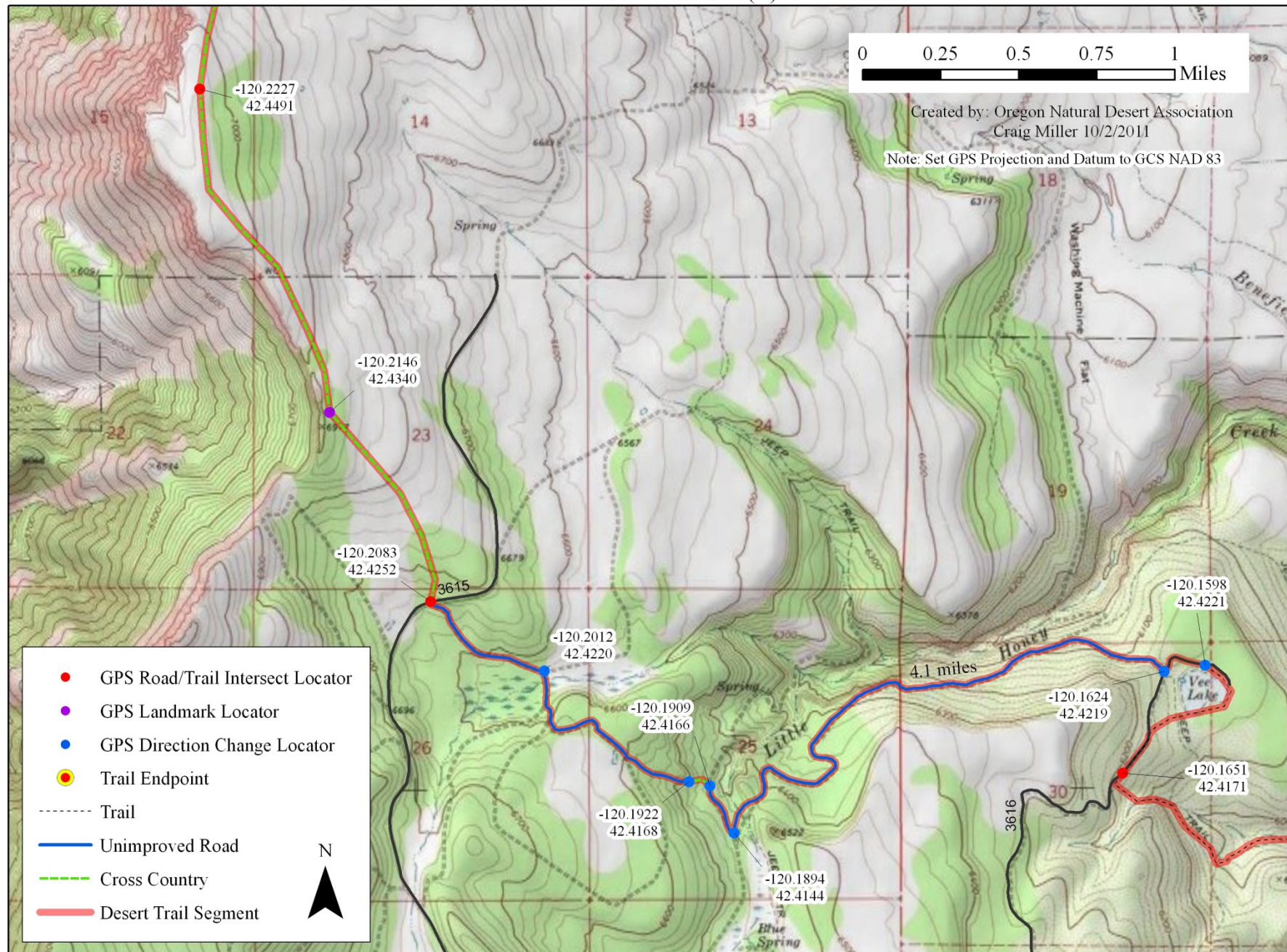
INVENTORY - Theory to Fact

- ❑ Proposed Route Conceived – early 2010
- ❑ Inventory Maps Created – 2010 thru 2012
- ❑ Volunteers in the field – 2011 thru 2013
- ❑ Route Revised – 2011 – 2013
- ❑ Final Route Mapped - 2013

Creating Inventory Maps



Fremont South to Abert Rim - Section (4) 6.0 miles



INVENTORY VOLUNTEERS

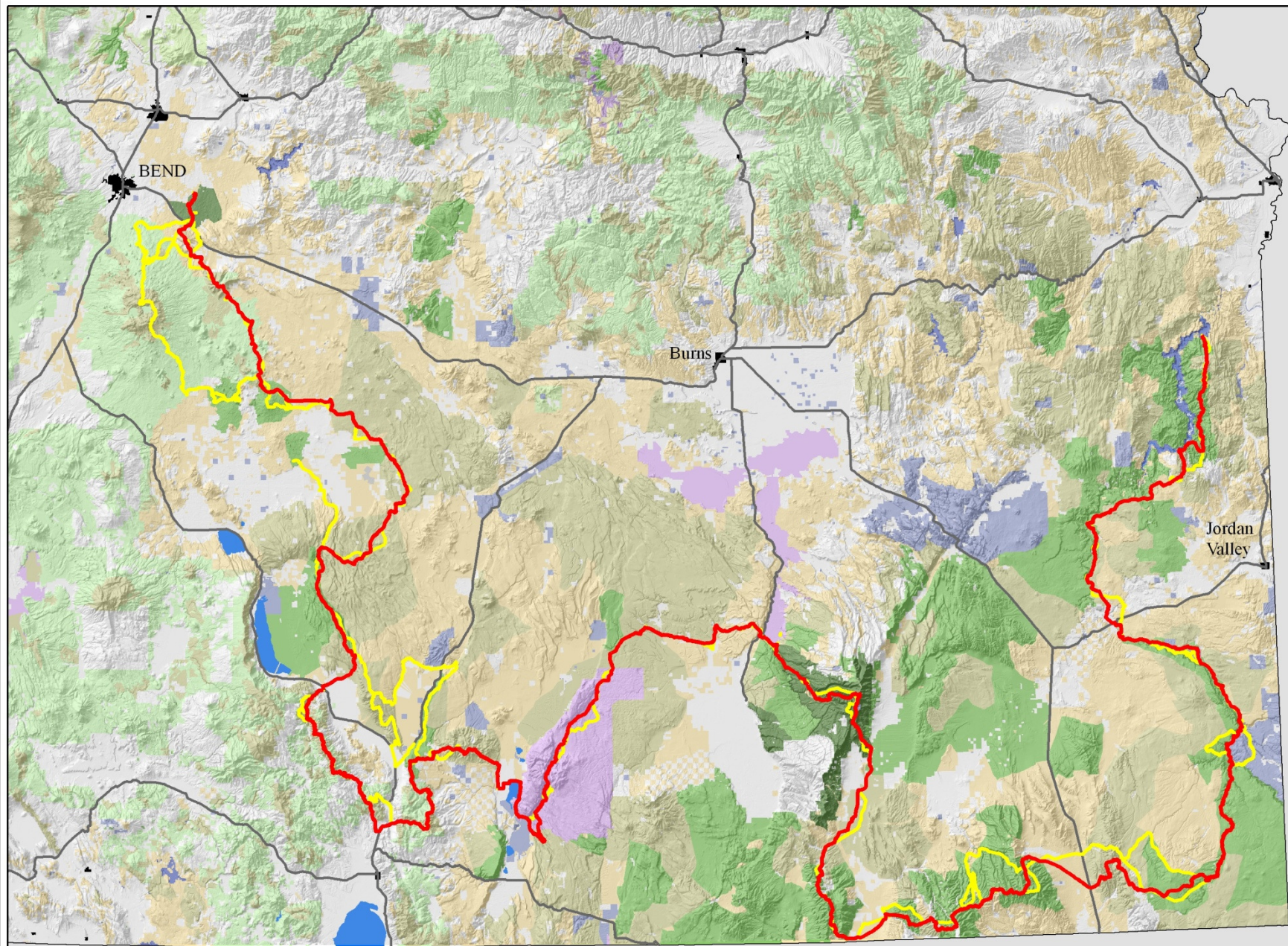








Oregon Desert Trail - Iterations

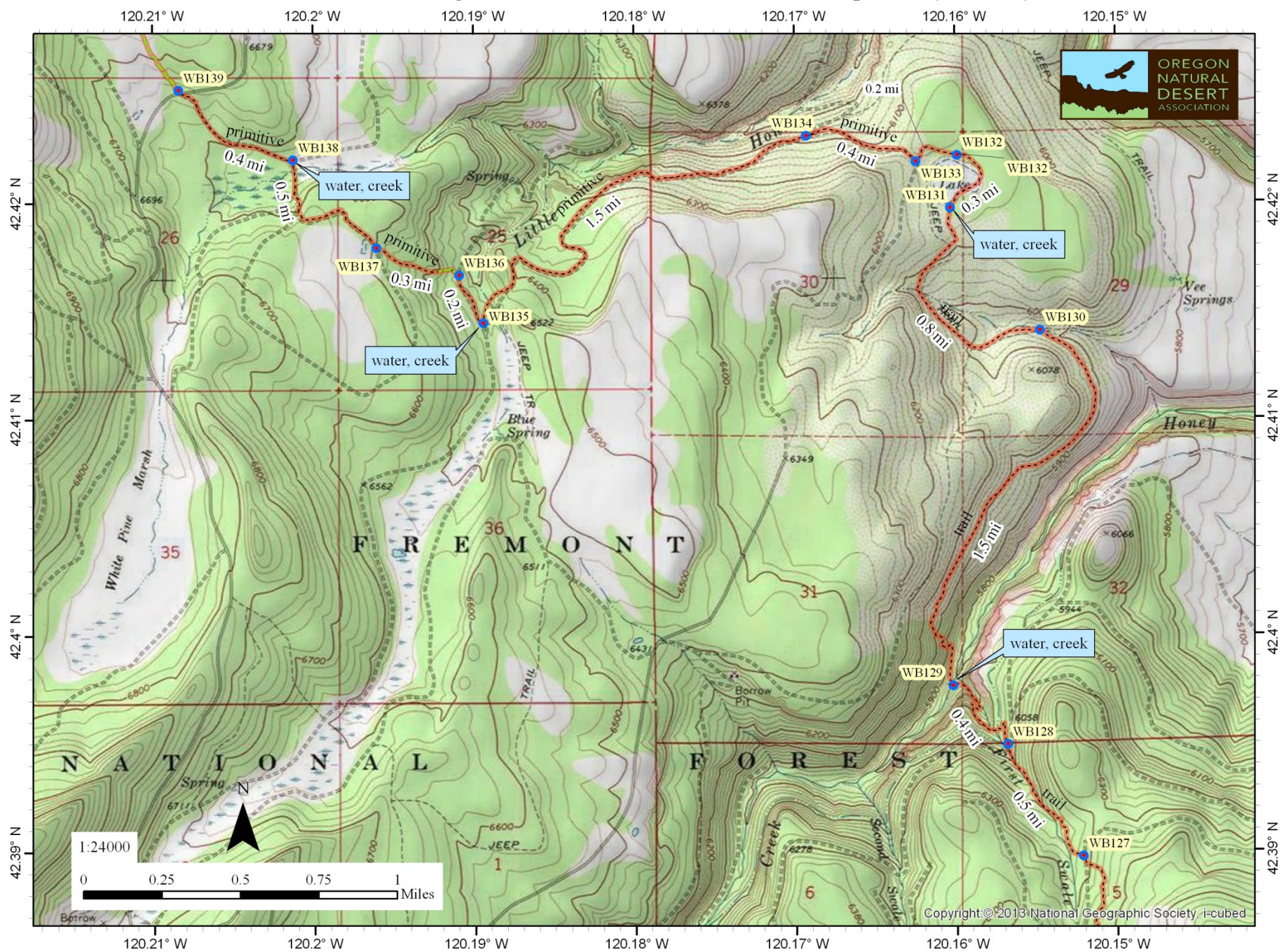




CURRENT STATUS

- ❑ Formal Request Made for National Recreation Trail
- ❑ Trail Guide with Detailed Description
- ❑ Final Maps - 167
- ❑ GPS Track Available
- ❑ Web Site Expected to be up by February 2014

West Basin and Range -- Abert South to Colvin Timbers: Map 4 of 6 (7.0 miles)





OREGON
NATURAL
DESERT
ASSOCIATION

QUESTIONS?



www.onda.org