

GIS at The Bulletin

Andy Zeigert
Graphics Reporter

News graphics department

Greg Cross

- Maps, charts and illustrations

Andy Zeigert

- Maps, charts and illustrations

Copy desk

- Basic charts and “pickup maps”

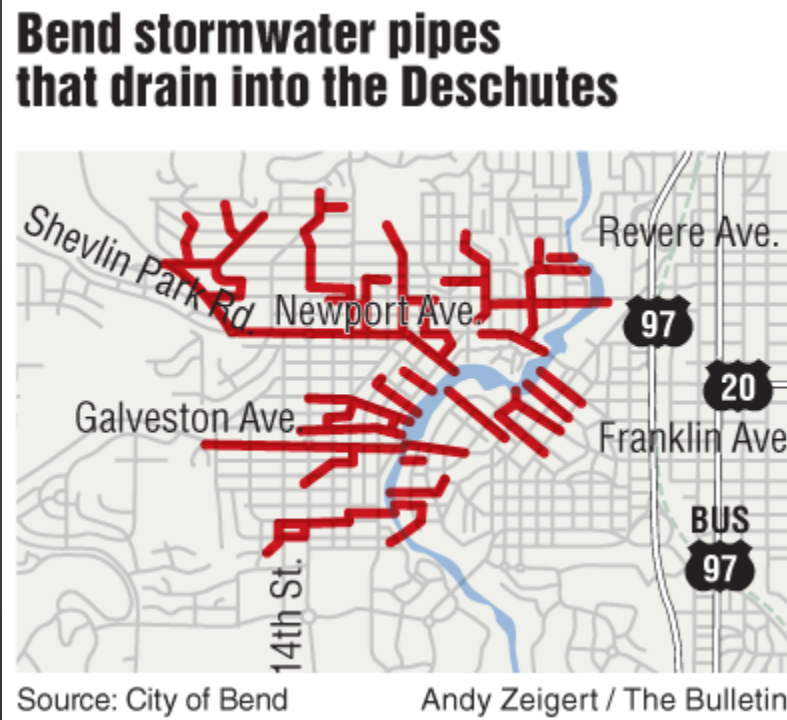
Purpose of maps in The Bulletin

All maps we publish are intended to tell a story.

- We almost never publish maps intended for general use.
- Maps are limited in size and therefore content.
- Maps usually accompany stories but are designed to stand alone, containing the “what,” “so what” and “now what” elements of

Maps in a newspaper

We generally aim for a sixth-grade reading level.



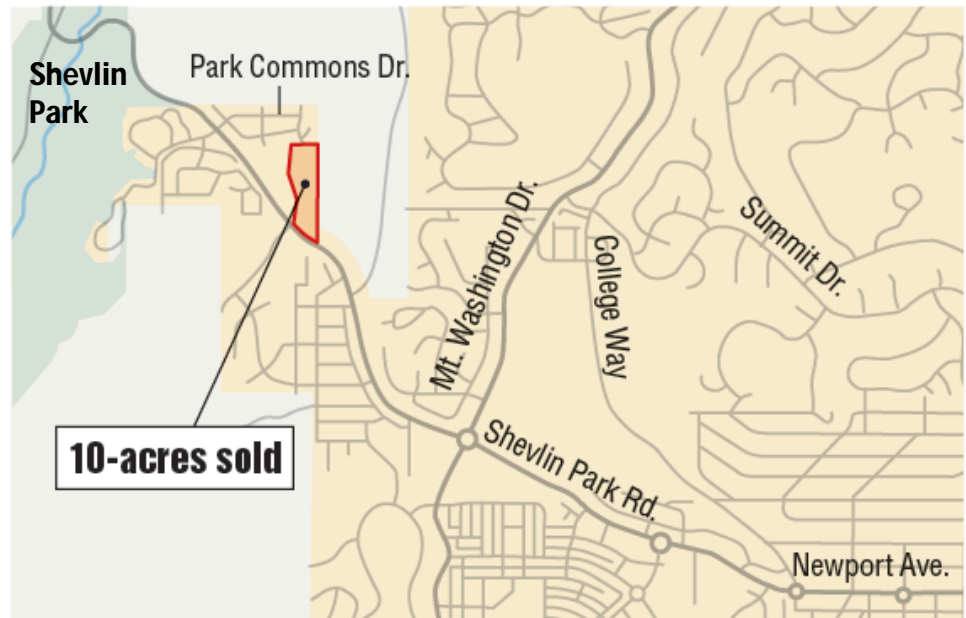
Maps in a newspaper, cont'd

Maps are no different. We avoid clutter to make the map useful for that story.

Answer the most basic question most readers have: "Where is this in relation to my house/work /church/etc.?"

Land purchase

Shevlin Development LLC paid \$2 million to buy a 10-acre property off Shevlin Park Road earlier this month.



Greg Cross / The Bulletin

Maps in a newspaper, cont'd

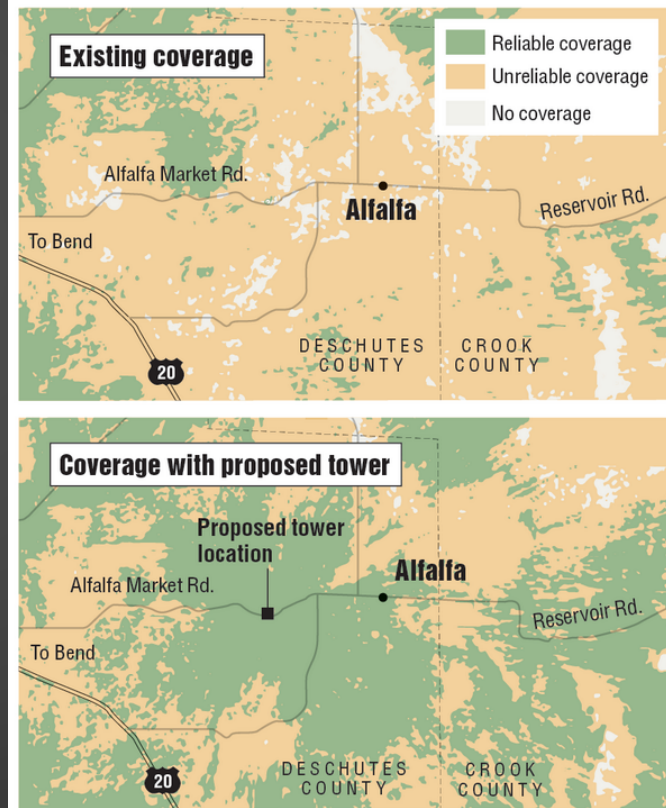
How might a reader be affected by geography?

- They might live here.

- They might work in or pass through the area for work.

New cell tower proposed

A new cellphone tower proposed near Alfalfa would boost AT&T 3G coverage over a large area east of Bend, but some Alfalfa residents are opposed to the tower.



Source: AT&T

Andy Zeigert / The Bulletin

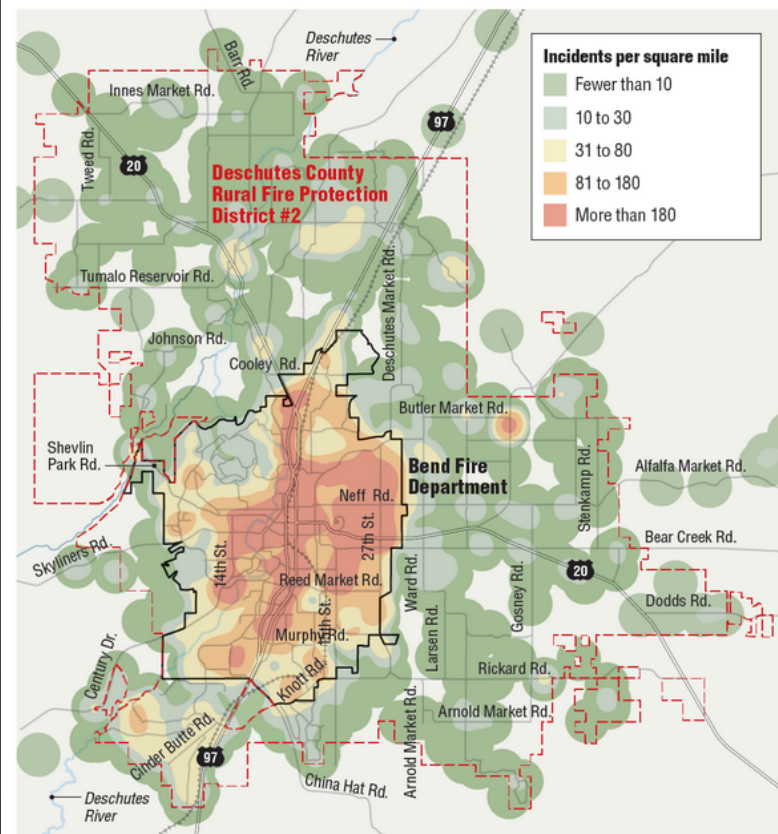
Maps in a newspaper, cont'd

What else might a reader want to know on this map?

- Location of fire stations?
- Location of hospitals?

Where are most incidents in and around Bend?

In 2012, the Bend Fire Department responded to 8,201 emergency and nonemergency incidents. Those incidents were mostly concentrated within the city limits, but there were other hot spots within Deschutes County Rural Fire Protection District No. 2. The map below shows the density of all incidents, both emergency and nonemergency.



Source: Fire District Feasibility Study

Andy Zeigert / The Bulletin

Software used outside of ESRI

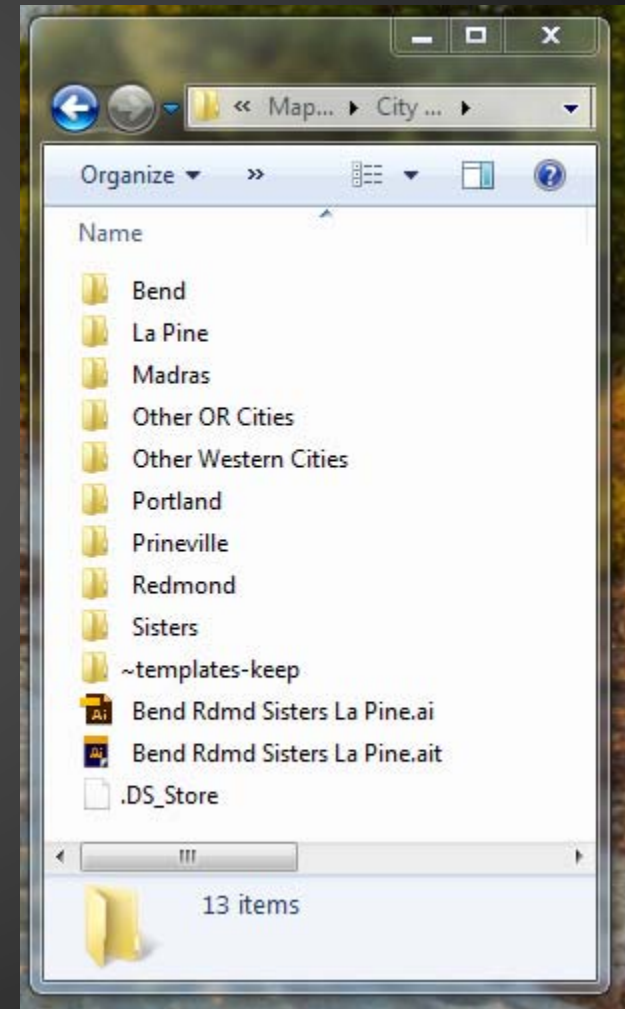


All maps we publish are built in Adobe Illustrator

- Some elements might be adapted or imported from a raster format, but we rely on Illustrator to give us minute control over every element that publishes.

All maps we publish are built in Adobe Illustrator

- We also have a deep and excellent archive of vector maps for 20+ years of publishing, including base maps that are already in our style and that we are constantly updating.



Other programs that we use

- Other Adobe programs such as Acrobat and Photoshop
- Online GIS and mapping programs
 - OpenStreetMap
 - County apps (LAVA, JeffCo Mapper, Crook County Property Research, etc.)
 - Scans of Forest Service and BLM maps
 - 3DEM for terrain maps

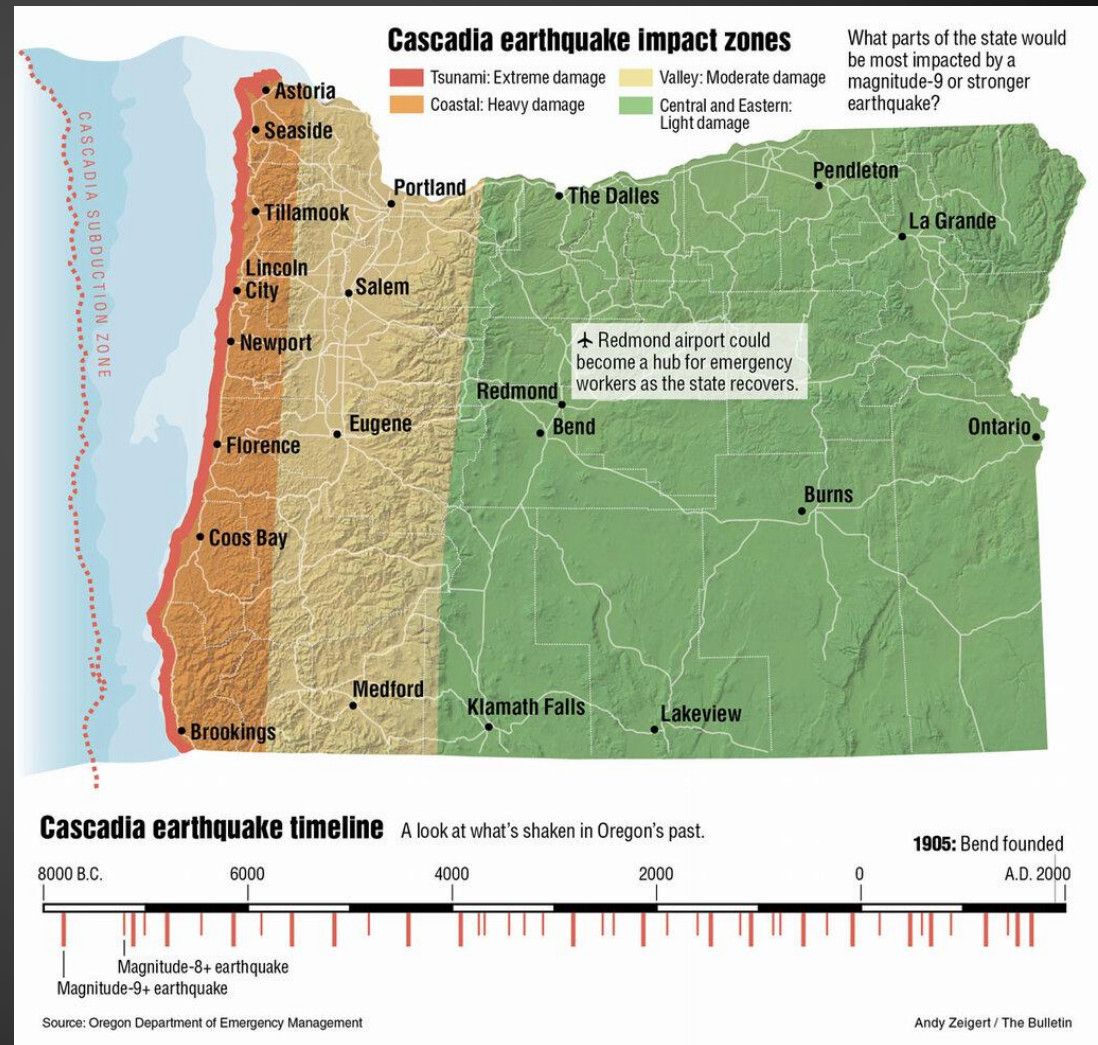
3DEM

- Dead simple way to create terrain visualizations from publicly available DEM files and satellite imagery



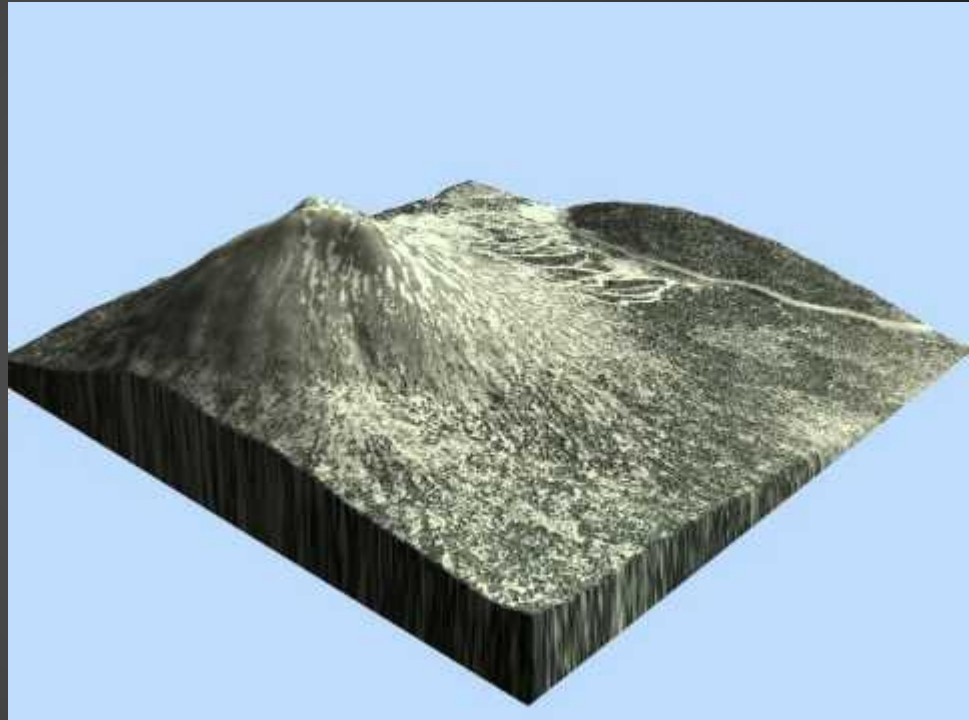
3DEM, cont'd

- Sometimes used to generate simple top-down topography



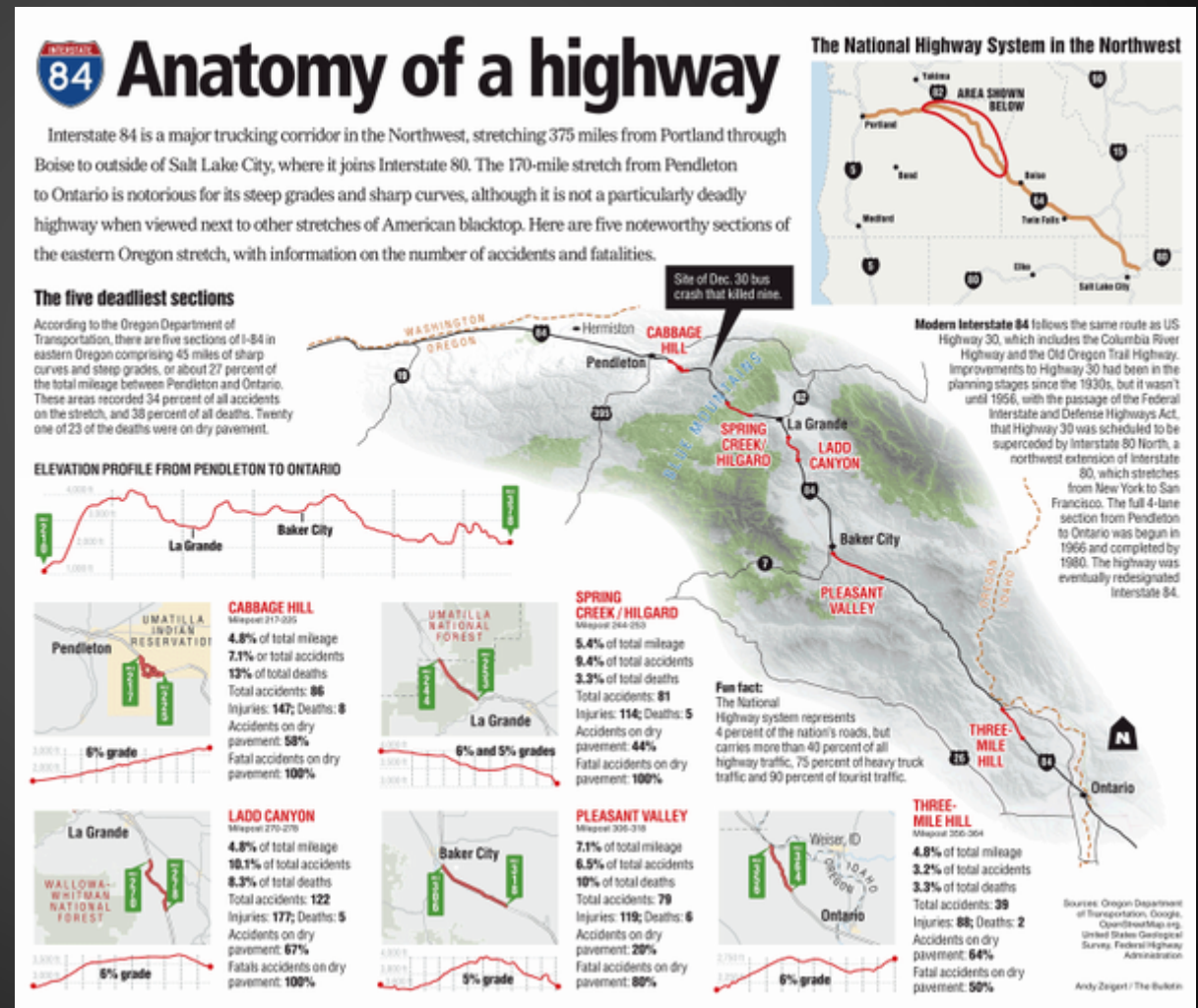
3DEM cont'd

- Sometimes used to create other perspectives of terrain visualizations , like this one of Mt. Bachelor



3DEM cont'd

- Also capable of producing elevation profiles, like the ones seen on this graphic



Things to know

As a GIS pro, it is highly likely that Greg or I will call you in a panic someday asking for map “scrap.” Sorry in advance!

- Sometimes we will use GIS-generated images directly, but it is rare.

Bend sewer model results

A new computer model of Bend's sewer system reveals the location of existing and future problems. This map shows problems in a section of south Bend. To find out if there are problems in your neighborhood, check a larger map online at (insert URL).

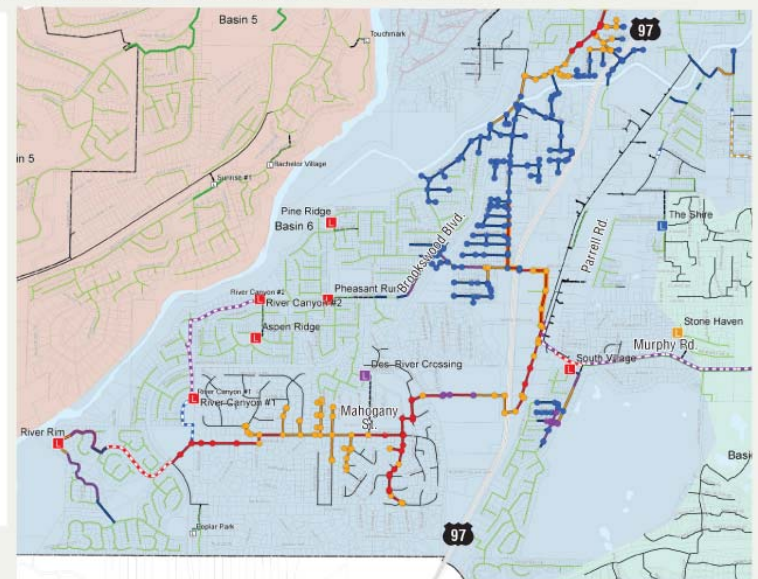
Legend

- Existing problems, even without a storm
- Existing problems, during a typical storm
- Problems predicted after 20 years of population growth, during a typical storm
- Problems predicted after 20 years of population growth, during a major storm

- Sewer basins**
- 5
 - 6
 - 9

Gravity sewer mains

- Less than 14-inch diameter
- Greater than 14-inch diameter
- Force main
- Gravity main



Source: City of Bend

Greg Cross / The Bulletin

How you can help me

- If sending materials to the media, PDFs with vector data will save folks like us a lot of time.
- If it seems like we're doing a lot of work to change the way your map looks, it's because we re-create maps to be consistent with our style.
- This kind of consistency helps us build trust with readers, but it can take extra time.

**Thank you for inviting
me**

Follow @bulletingrafx on Twitter!